



Active Catalog

2026 Edition

BaliSwim

Your Active Line. Easy.
baliswim.com

We get you started, forecast trends, source, develop, produce and make manufacturing so much easier:

Starter Kits

How-to Guides

Fabrics & Prints

Hardware Eco-options

Pattern Making

Ready Design

Online Bulk & Sample Shop

Fits & Re-fits

Grading

Bulk Production

Quality Control

Packaging & Shipping

We cover it all

At Bali Swim we are dedicated to helping entrepreneurs succeed and strive to provide you with the tools, resources, strategies, and guidance that you need to create quality brands - just like our Starter Kits and this catalog!

We are here to modernize swim and apparel manufacturing industry - and offer low minimum orders, an innovative online shop for sample and bulk orders, on-trend and customizable ready designs, eco options for almost everything that we offer, and a transparent and open factory door policy.

Every order with us supports grassroots organizations that advance women's education and the environment; and we have implemented business development and hiring practices that raise the standards for women, health and income in our industry.

We also work hard to bridge any gap by providing fast and responsive WhatsApp and live chat support, effortless scheduling for video calls, and team that are ready to guide you through every step.

At Bali Swim, we work to make entrepreneurship accessible, dependable, and fulfilling for you and our worldwide community.



Shop Active

**Easiest & quickest way to create
your luxe brand.**

Millions of ready design options with your custom brand label.

[SHOP.BALISWIM.COM](https://shop.baliswim.com)



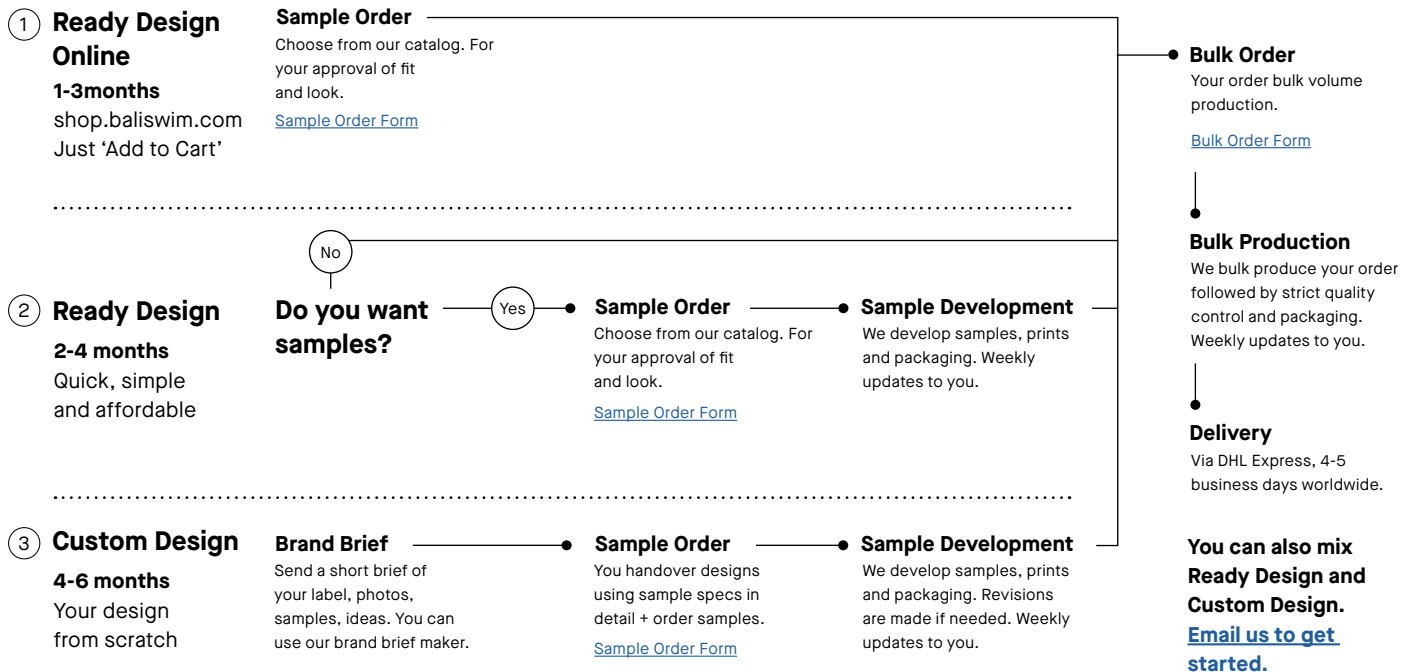
Step-by-step

Preparation

Sampling Stage
1-3 Months

Production Stage
2-3 Months

Delivery







Ready Design

Buy samples and bulk on
shop.baliswim.com now!

Ready Design is our ready-to-go collection of activewear and loungewear designs. Choose the pieces you like, put your brand on them – and they're ready to sell! Each year we conduct extensive research on what style is in, what's out, and what is the upcoming trends are for the season ahead. From that we create a collection of designs – both on trend and re-worked classics.

You can mix and match tops, shorts and leggings between any styles. You could even combine them with your custom designs to flesh out your line. All styles are available in our full range of fabrics, in all colors and in any print. There are no development costs (pattern making & grading) with ready design. You only pay per piece. It's the quickest, simplest and most affordable method to manufacture a label.

Custom Design

Custom Design is where your ideas shine! For us to develop your dream athletic or sport piece we want to understand your ideas clearly. Ideally this means complete tech specs + patterns or samples of what you want to develop. But since we also work with non-designers we are definitely flexible. We have templates example (which we call sample specs) with clear instructions for how to start and what we need from you. This could include pictures of products you like with notes on any adjustments. We'll happily guide you.

Extra Notes Feel free to take design inspiration from our Ready Design range – taking parts from one design and adding to another or combining them with your own ideas.

Women’s Active / Average Bulk Prices

CUSTOM DESIGN | +/- 50% | US\$

Fabric		Tops	Shorts	Leggings	Jumpsuits
Bali Swim (Juno)	Solid	\$18 ⁹⁵	\$20 ⁹⁵	\$22 ⁹⁵	\$24 ⁹⁵
Carvico (VITA Power (ECONYL [®]) Δ)	Solid	\$19 ⁹⁵	\$21 ⁹⁵	\$24 ⁹⁵	\$25 ⁹⁵

Bulk Volume Price Chart

US\$ | *LESS INCUR SURCHARGES, MORE EARN DISCOUNTS. FLEXIBLE PRODUCTION AND GROWTH.

Design	Only Ready Design (RD)	All: Ready Design (RD), Custom Design (CD), or Mix			
Volume	<250	250-999	1000-2499	2500-4999	5000+
Surcharge/ Discount*	+\$600 on total order	\$0	-\$1 per piece	-\$2 per piece	Inquire

	Service	Price, US\$	Comments
Product Development	Custom Design Development Fee	\$99/design (50% credited to bulk)	We offer this service for you to develop your own custom designs from scratch, including pattern making and size range grading. 50% of the fee will be credited towards your bulk order for each the designs you develop. Any revision to your custom design is not included in this fee.
	Custom Design Sample Fee	3X Bulk Price	Make samples to develop your own design. The fee includes one sample we send to you, and one copy we keep with us, so you don't have to return your sample, saving you time and costs in development.
	Custom Design Additional Revision Fee	\$49/revision	If any revision is needed after the first development. Charged per every round of revision.
	Pre-Production Sample (PPS)	2X Bulk Price	Order with production, delivered early. Max 20PPS and 1 size per style/color/print. Additional sizes or 20+ counts as regular sample (3X)
	Ready Design Sample Fee	3X Bulk Price	No development cost, pay per pieces. Make samples to test colors, prints and hardware for Ready Design Refer to Ready Design price lists.
Prints & Graphics	Print Strike(s) & Mock-up	\$25	Digital mock-up of print at different scales on bikini model + test print on fabric.
	Print Placement (Rare)	\$35/style/size	Only for prints with a set specific layout on product. Development cost to finalize pattern digitally and placing print according to spec.
	Logo Re-work (Optional)	\$35	If your logo is of low resolution, file corrupt, or need other adjustment or even re-creation. One-time charge.
	Packaging Development	\$10/design	Includes layout of logo/tagline/website on packaging option, mock-up for approval and actual sample.
	Other Graphic Work	\$25/hour	

MOQ Per Order

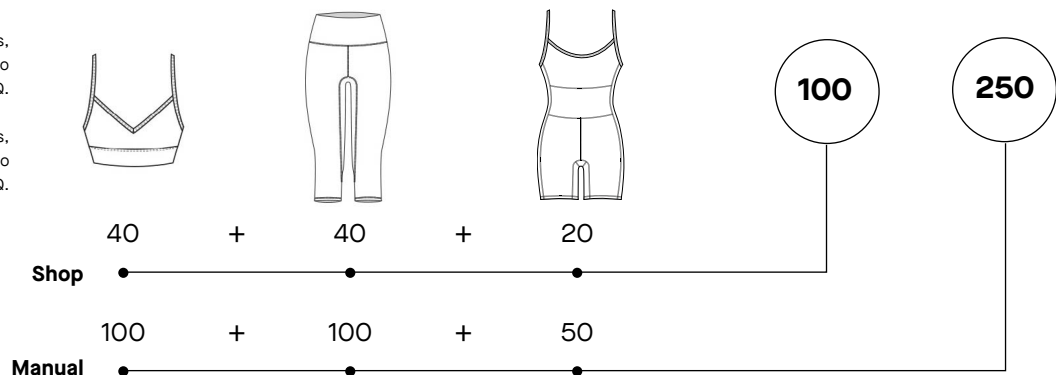
Samples
No MOQ.

Shop
MOQ 100 pcs/order.

Manual (Custom Design or Mix)
MOQ 250 pcs/order.

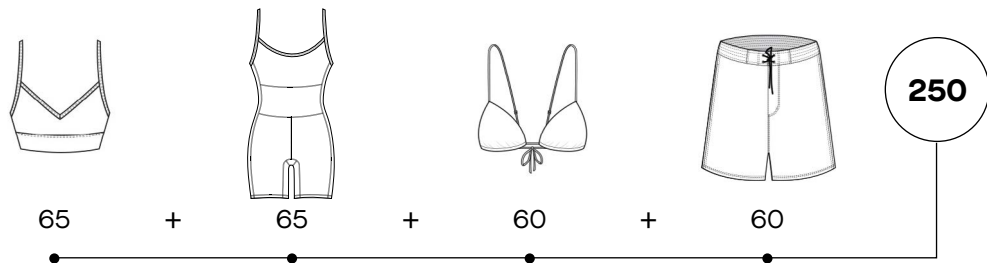
Example: You can order 40 active tops,
40 active bottoms, and 20 bodysuits to
reach our Shop Order MOQ.

You can order 100 active tops,
100 active bottoms, and 50 bodysuits to
reach our Manual Order MOQ.



You can mix
women's active, women's
swim, and men's swim to
reach our MOQ. We count
the pcs together.

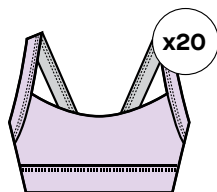
Example: You can order 65 active
tops, 65 bodysuits, 60 bikini tops,
and 60 men's shorts.



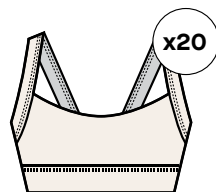
MOQ Per Style/Color

Our MOQ per style and color/print is 20pcs.

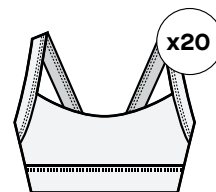
Example: If you want a particular active top in purple, sand and grey, you have to order at least 20 pcs of each.



Purple Tops



Sand Tops



Grey Tops



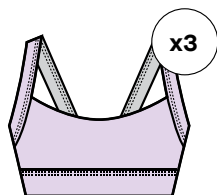
MOQ Per Size

Our MOQ per size 3 pcs.

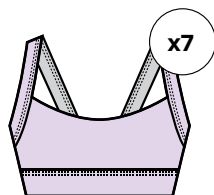
You need to order minimum 3 of each size you want your active top in.

Example: If you want your blue active top in a size range of XS-L, then you can order 3XS, 7S, 7M, and 3L.

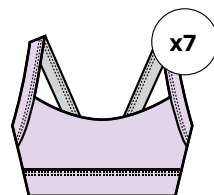
You can order more however you like, and use any size range you prefer, but for whatever size you choose, you need to order at least 3 pcs.



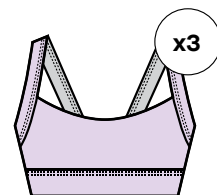
XS



S



M



L





Ready Design 2026

**You can buy samples
and bulk right now at
shop.baliswim.com!**

Mix and match tops, shorts and leggings between any styles as you wish. You could even combine our designs with your own designs to complete your line. Take the designs as they are (and add your choice of colors) and there will be no development fees (pattern making & grading).

You only pay for what you order (the full price list can be seen at the end of this catalog).

If you want other cuts or to adjust the design of our styles in other ways, you can - but we'll treat it as a custom design and we need to re-develop the style from scratch, this would include development fees.

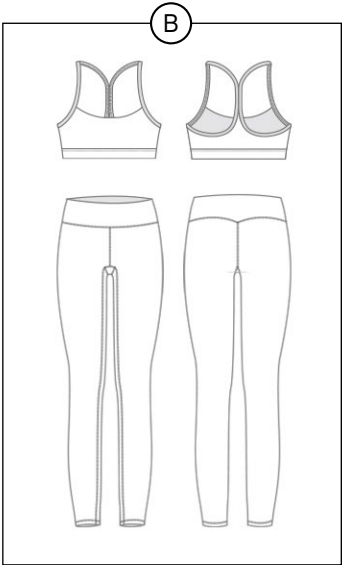
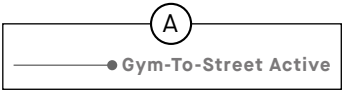
Adding or switching a small accessory detail is most likely accepted without re-development. Do ask us, and we'll let you know.

We will be releasing new designs yearly, both classics and on-trend.



How to read this catalog

- (A) Product Categories
- (B) Technical Drawings
- C Product Details



Front Image



Side Image



Back Image



TOP

BSWA-T34

Fabric: BS Juno, Carvico Vita Power

Style Details:

- Low neck strappy bra
- T-back style
- Underbust band
- Low support

Stitching: Seamless, Coverstitch

Hardware: -

Padding: Removable padding hole -
Padding can be added with extra cost

BOTTOM

BSWA-B34

Fabric: BS Juno, Carvico Vita Power

Style Details:

- Basic leggings
- Mid rise waist
- Back curved waistband
- Triangle gusset

Stitching: Coverstitch

Length: 7/8 Length (On photo)

Rise: Mid (On Photo)





Women's Active

A collection designed for movement—whether it's Pilates, padel, yoga, strength training, or simply unwinding. With high-quality recycled fabrics and a super-soft, brushed option, it complements a dynamic lifestyle, transitioning effortlessly from active pursuits to relaxed lounging. Whether part of a wider range or a standalone line, these pieces offer unparalleled comfort, versatility, and a modern feel that resonates with your customers.





2026

● Gym-To-Street Active



JACKET

BSWA-T38

Fabric: BS Juno, Carvico Vita Power

Style Details:

- High neck
- Full front zipper opening
- Long sleeve top
- Front & back paneled detail

Stitching: Coverstitch

Hardware: Zipper

Padding: Removable padding hole -
Padding can be added with extra cost

SHORTS

BSWA-B38

Fabric: BS Juno, Carvico Vita Power

Style Details:

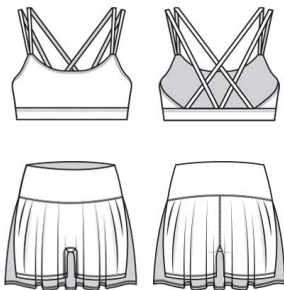
- Back scrunched short
- Mid rise waist
- Back curved waistband

Stitching: Coverstitch

Length: Short (On photo)

Rise: Mid (On Photo)

● Gym-To-Street Active



SPORTS BRA

BSWA-T37

Fabric: BS Juno, Carvico Vita Power

Style Details:

- Strappy bra
- Back strappy detail
- Underbust band
- Square neck
- Low support

Stitching: Coverstitch

Hardware: -

Padding: Removable padding hole -
Padding can be added with extra cost

PADEL & TENNIS SKORT

BSWA-B36

Fabric: BS Juno, Carvico Vita Power

Style Details:

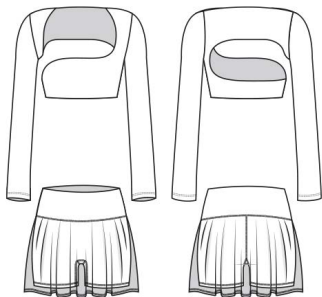
- Skort
- Mid rise waist
- Flare skirt
- Double shorts lining
- Straight waistband

Stitching: Coverstitch

Length: Short (On photo)

Rise: Mid (On Photo)

● Gym-To-Street Active



LONG SLEEVE TOP

BSWA-T36

Fabric: BS Juno, Carvico Vita Power

Style Details:

- Asymmetric top
- Long sleeves
- Low support

Stitching: Coverstitch

Hardware: -

Padding: Removable padding hole -
Padding can be added with extra cost

PADEL & TENNIS SKORT

BSWA-B36

Fabric: BS Juno, Carvico Vita Power

Style Details:

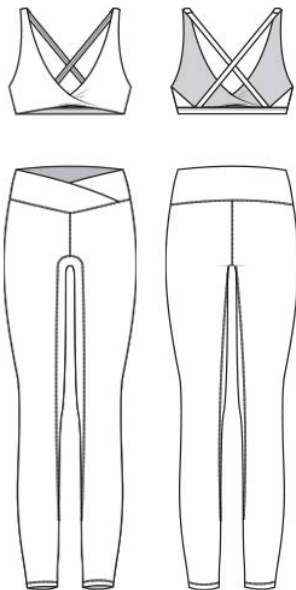
- Skort
- Mid rise waist
- Flare skirt
- Double shorts lining
- Straight waistband

Stitching: Coverstitch

Length: Short (On photo)

Rise: Mid (On Photo)

● Gym-To-Street Active



SPORTS BRA

BSWA-T35

Fabric: BS Juno, Carvico Vita Power

Style Details:

- Front twist bra
- Low scoop neck
- Criss-cross cut out back
- Underbust band
- Low support

Stitching: Coverstitch

Hardware: -

Padding: Removable padding hole -
Padding can be added with extra cost

LEGGING

BSWA-B35

Fabric: BS Juno, Carvico Vita Power

Style Details:

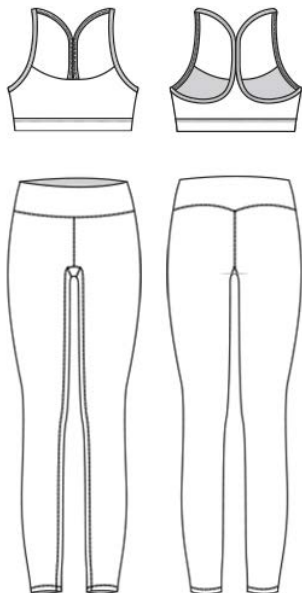
- Overlap waistband legging
- Mid rise waist
- H-shaped gusset

Stitching: Coverstitch

Length: 7/8 Length (On photo)

Rise: Mid (On Photo)

● Gym-To-Street Active



SPORTS BRA

BSWA-T34

Fabric: BS Juno, Carvico Vita Power

Style Details:

- Low neck strappy bra
- T-back style
- Underbust band
- Low support

Stitching: Seamless, Coverstitch

Hardware: -

Padding: Removable padding hole -
Padding can be added with extra cost



LEGGING

BSWA-B34

Fabric: BS Juno, Carvico Vita Power

Style Details:

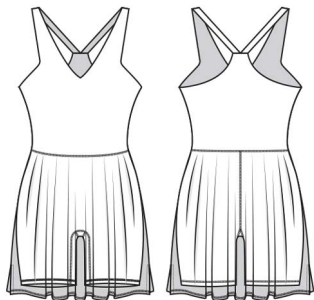
- Basic leggings
- Mid rise waist
- Back curved waistband
- Triangle gusset

Stitching: Coverstitch

Length: 7/8 Length (On photo)

Rise: Mid (On Photo)

● Gym-To-Street Active



PADEL & TENNIS DRESS

BSWA-S06

Fabric: BS Juno, Carvico Vita Power

Style Details:

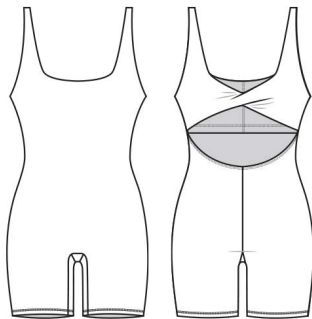
- V-neck dress
- V-back
- Dress with inner short
- Triangle gusse

Stitching: Coverstitch

Padding: Removable padding hole -
Padding can be added with extra cost

Length: Short

● Gym-To-Street Active



SHORT JUMPSUIT

BSWA-S05

Fabric: BS Juno, Carvico Vita Power

Style Details:

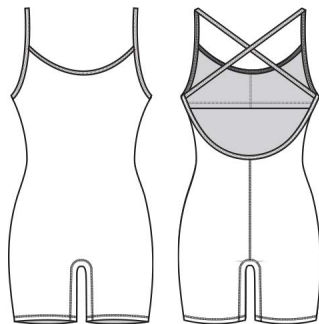
- Low square neck bodysuit
- Back cut out strap
- Back twist bra
- Low to medium support
- Triangle gusset

Stitching: Coverstitch

Padding: Removable padding hole -
Padding can be added with extra cost

Length: Short

● Gym-To-Street Active



SHORT JUMPSUIT

BSWA-S04

Fabric: BS Juno, Carvico Vita Power

Style Details:

- Low back suits
- Round neck
- Thin straps
- Low to medium support
- H-shaped gusset

Stitching: Coverstitch

Padding: Removable padding hole -
Padding can be added with extra cost

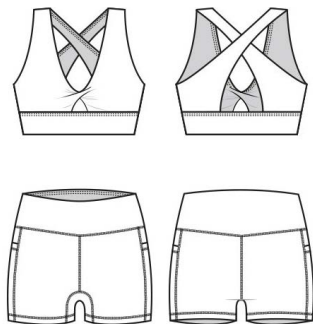
Length: Short



Core



● Gym-To-Street Active



SPORTS BRA

BSWA-T26

Fabric: Carvico Vita Power

Style Details:

- Front twist bra
- Low scoop neck
- Criss-cross cut out back
- Long line style
- Underbust band
- Medium support

Stitching: Seamless, Cover stitch

Padding: Removable padding hole -
Padding can be added with extra cost

SHORTS

BSWA-B26

Fabric: Carvico Vita Power

Style Details:

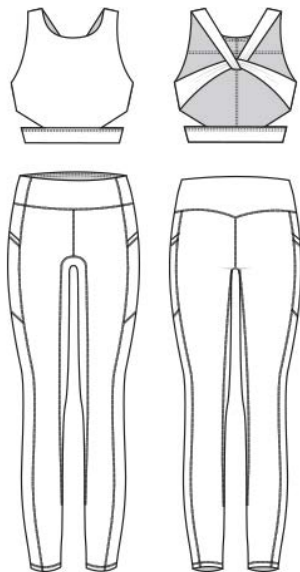
- Side pocket booty shorts
- Side panel and pocket
- Mid rise waist
- Back triangular waistband
- Triangle gusset H-shaped

Stitching: Cover stitch

Length: Short (On photo)

Rise: Mid (On Photo)

● Gym-To-Street Active



SPORTS BRA

BSWA-T25

Fabric: Carvico Vita Power

Style Details:

- Looped strap bra
- Round crew neck
- Side and back cut out strap detail
- Low to medium support

Stitching: Seamless, Cover stitch

Padding: Removable padding hole -
Padding can be added with extra cost



LEGGING

BSWA-B25

Fabric: Carvico Vita Power

Style Details:

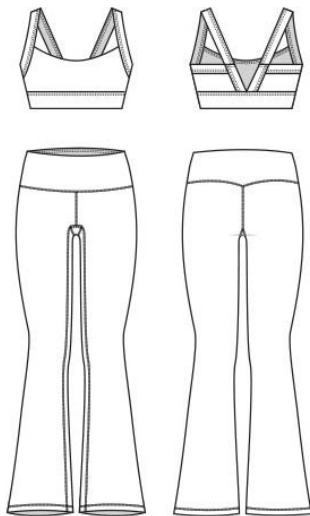
- Side pocket leggings
- Side panel and pocket
- Mid rise waist
- Back curved waistband
- H-shaped gusset

Stitching: Cover stitch

Length: 7/8 Length (On photo)

Rise: Mid (On Photo)

● Gym-To-Street Active



SPORTS BRA

BSWA-T21

Fabric: Carvico Vita Power

Style Details:

- Low V-back bra
- Round neck
- Underbust band
- Low to medium support

Stitching: Seamless

Padding: Removable padding hole -
Padding can be added with extra cost



PANTS

BSWA-B21

Fabric: Carvico Vita Power

Style Details:

- Flare legging
- Back curved waistband
- Triangle gusset

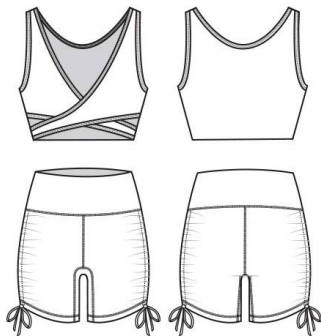
Stitching: Cover stitch

Length: 7/8 Length (On photo)

Rise: Mid (On Photo)



● Gym-To-Street Active



SPORTS BRA

BSWA-T20

Fabric: Carvico Vita Power

Style Details:

- Cut out bra
- Low V-neck
- Front cut out detail
- Low support

Stitching: Seamless, Cover stitch

Padding: Removable padding hole -
Padding can be added with extra cost

SHORTS

BSWA-B20

Fabric: Carvico Vita Power

Style Details:

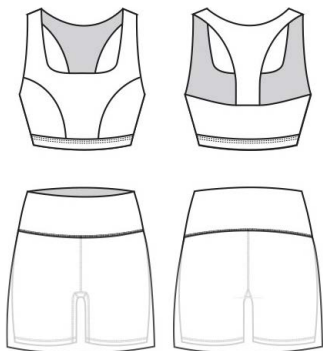
- Side gathered booty shorts
- Straight waistband
- H-shaped gusset

Stitching: Cover stitch

Length: Short (On photo)

Rise: Mid (On Photo)

● Gym-To-Street Active



SPORTS BRA

BSWA-T19

Fabric: Carvico Vita Power

Style Details:

- T-back bra
- Square neck
- Princess line curved panel
- Underbust band
- Low to medium support

Stitching: Seamless, Cover stitch

Padding: Removable padding hole -
Padding can be added with extra cost

SKORT

BSWA-B19

Fabric: Carvico Vita Power

Style Details:

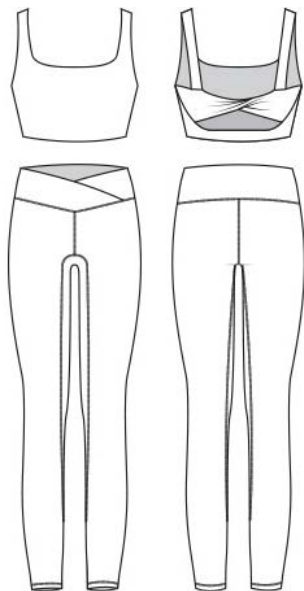
- Skort
- Mid rise waist
- Flare skirt
- Double shorts lining
- Straight waistband

Stitching: Cover stitch

Length: Short (On photo)

Rise: Mid (On Photo)

● Gym-To-Street Active



SPORTS BRA

BSWA-T18

Fabric: Carvico Vita Power

Style Details:

- Back twist bra
- Square neck
- Back cut out strap detail
- Low to medium support

Stitching: Seamless

Padding: Removable padding hole -
Padding can be added with extra cost

LEGGING

BSWA-B18

Fabric: Carvico Vita Power

Style Details:

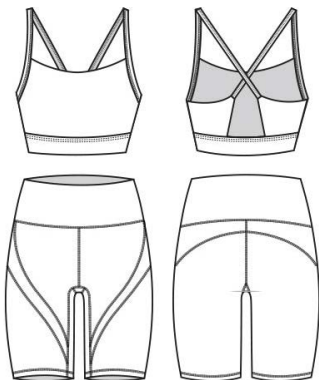
- Overlap waistband leggings
- Mid rise waist
- H-shaped gusset

Stitching: Cover stitch

Length: 7/8 Length (On photo)

Rise: Mid (On Photo)

● Gym-To-Street Active



SPORTS BRA

BSBA-T16

Fabric: Carvico Vita Power

Style Details:

- Criss cross bra
- Low round neck
- Back cut out detail
- Underbust band
- Low to medium support

Stitching: Seamless, Cover stitch

Padding: Removable padding hole -
Padding can be added with extra cost

SHORTS

BSBA-B16

Fabric: Carvico Vita Power

Style Details:

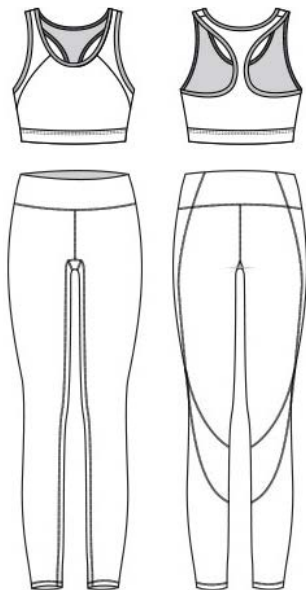
- Front paneled shorts
- Mid rise waist
- Back panel bum detail
- Straight waistband
- Back yoke detail
- Triangle gusset

Stitching: Cover stitch

Length: Standard (On photo)

Rise: Mid (On Photo)

● Gym-To-Street Active



SPORTS BRA

BSWA-T15

Fabric: Carvico Vita Power

Style Details:

- Racer back bra
- Round neck
- Front curved panel detail
- Underbust band
- Low to medium support

Stitching: Cover stitch

Padding: Removable padding hole -
Padding can be added with extra cost



LEGGING

BSWA-B15

Fabric: Carvico Vita Power

Style Details:

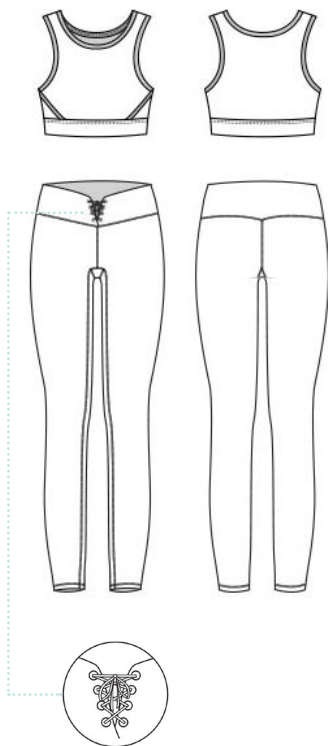
- Paneled leggings
- Back curved panel detail
- Straight waistband
- Triangle gusset

Stitching: Cover stitch

Length: 7/8 Length (On photo)

Rise: Mid (On Photo)

● Gym-To-Street Active



SPORTS BRA

BSWA-T13**Fabric:** Carvico Vita Power**Style Details:**

- Side overlap bra
- Long line style
- Side seam overlap style
- Underbust band
- Low to medium support

Stitching: Seamless, Binding stitch

Padding: Removable padding hole -
Padding can be added with extra cost

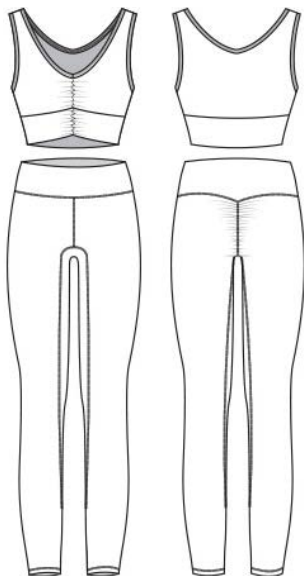
LEGGING

BSWA-B13**Fabric:** Carvico Vita Power**Style Details:**

- Laced up legging
- Mid rise waist
- Back curved waistband
- Triangle gusset

Stitching: Cover stitch**Length:** 7/8 Length (On photo)**Rise:** Mid (On Photo)

● Gym-To-Street Active



SPORTS BRA

BSWA-T11

Fabric: Carvico Vita Power

Style Details:

- Low V-neck bra
- Front scrunched detail
- Long line style
- Underbust band
- Low support

Stitching: Binding Stitch, Zig Zag Stitch

Padding: Removable padding hole -
Padding can be added with extra cost



LEGGING

BSWA-B11

Fabric: Carvico Vita Power

Style Details:

- Back scrunched legging
- Mid rise waist
- Back curved waistband
- H-shaped gusset

Stitching: Cover stitch

Length: 7/8 Length (On photo)

Rise: Mid (On Photo)

● Gym-To-Street Active



SPORTS BRA

BSWA-T10

Fabric: Carvico Vita Power

Style Details:

- Low neck strappy bra
- T-back style
- Underbust band
- Low support

Stitching: Seamless, Binding stitch

Padding: Removable padding hole -
Padding can be added with extra cost

SHORTS

BSWA-B10

Fabric: Carvico Vita Power

Style Details:

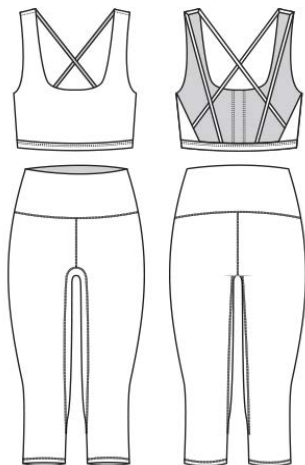
- Side paneled booty shorts
- Back curved bum detail
- Mid rise waist
- Straight waistband
- Triangle gusset

Stitching: Cover stitch

Length: Short (On photo)

Rise: Mid (On Photo)

● Gym-To-Street Active



SPORTS BRA

BSWA-T08

Fabric: Carvico Vita Power

Style Details:

- Strappy bra
- Back strappy detail
- Underbust band
- Low support

Stitching: Seamless, Cover stitch

Padding: Removable padding hole -
Padding can be added with extra cost



LEGGING

BSWA-B08

Fabric: Carvico Vita Power

Style Details:

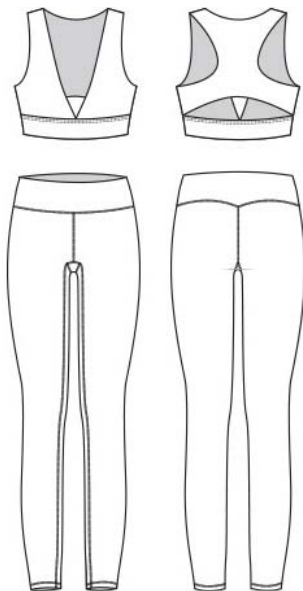
- Basic knee leggings
- Mid rise waist
- Straight waistband
- H-shaped gusset

Stitching: Cover stitch

Length: Below the knee (On photo)

Rise: Mid (On Photo)

● Gym-To-Street Active



SPORTS BRA

BSWA-T06

Fabric: Carvico Vita Power

Style Details:

- Plunging V-neck bra
- Racer back style
- Underbust band
- Back cut out strap detail
- Low to medium support

Stitching: Seamless, Cover stitch

Padding: Removable padding hole -
Padding can be added with extra cost

LEGGING

BSWA-B06

Fabric: Carvico Vita Power

Style Details:

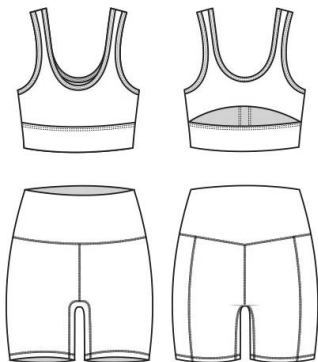
- Basic leggings
- Mid rise waist
- Back curved waistband
- Triangle gusset

Stitching: Cover stitch

Length: 7/8 Length (On photo)

Rise: Mid (On Photo)

● Gym-To-Street Active



SPORTS BRA

BSWA-T05

Fabric: Carvico Vita Power

Style Details:

- Back strap detail bra
- Low square neck
- Back cut out strap detail
- Underbust band
- Low to medium support

Stitching: Seamless, Binding Stitch

Padding: Removable padding hole -
Padding can be added with extra cost

SHORTS

BSWA-B05

Fabric: Carvico Vita Power

Style Details:

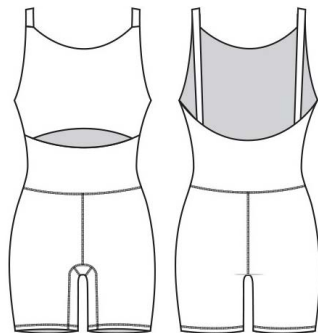
- Basic shorts
- Mid rise waist
- Front side panel detail
- Back triangular waistband
- H-shaped gusset

Stitching: Cover stitch

Length: Short (On photo)

Rise: Mid (On Photo)

● Gym-To-Street Active



SHORT JUMPSUIT

BSWA-S02

Fabric: Carvico Vita Power

Style Details:

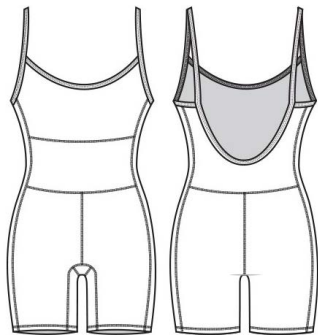
- Cut out suits
- Front cut out detail
- Low back
- Low to medium support
- Triangle gusset

Stitching: Seamless, Cover stitch

Padding: Removable padding hole -
Padding can be added with extra cost

Length: Short

● Gym-To-Street Active



SHORT JUMPSUIT

BSWA-S01

Fabric: Carvico Vita Power

Style Details:

- Low back suits
- Round neck
- Thin straps
- Low to medium support
- Triangle gusset

Stitching: Binding stitch

Padding: Removable padding hole -
Padding can be added with extra cost

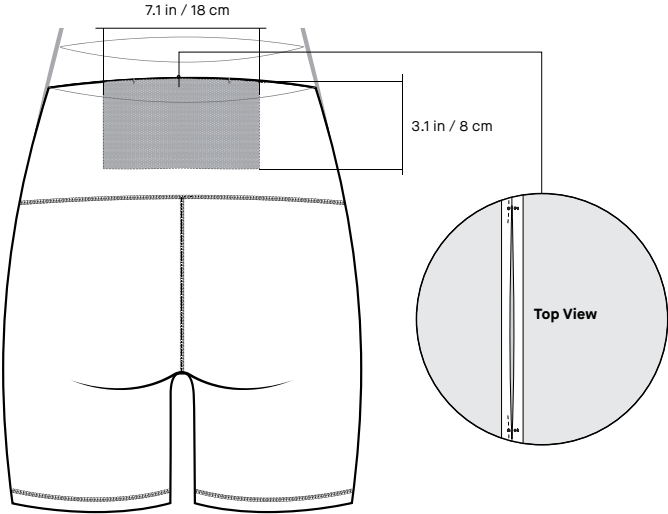
Length: Short





Hidden Pocket Options

You may choose to add a hidden mesh pocket in the back of your bottom's waistband panel with \$2 of extra cost. The hidden pocket is discrete & big enough to fit your phone.

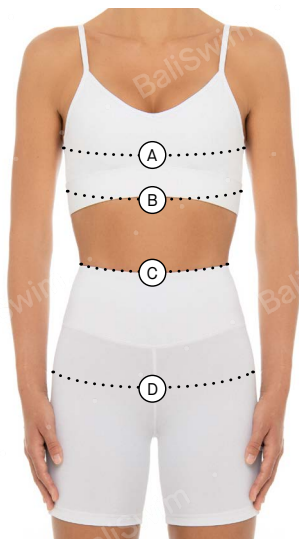


Medium and High Rise Options
Bigger pocket can fit regular cellphones



Standard Size Chart

WOMEN'S ACTIVE | 2024 VERSION



International Sizing	XS	S	M	L	XL
US	4	6	8	10	12
AU/UK	8	10	12	14	16
Cup	32	34	36	38	40
Bust (cm)	83	87	91	95	99
Underbust (cm)	68	72	76	80	84
Waist (cm)	65	69	73	77	81
Hip (cm)	91	95	99	103	107
Bust (in)	32.7	34.2	35.8	37.4	39
Underbust (in)	26.7	28.3	29.9	31.5	33
Waist (in)	25.6	27.1	28.7	30.3	31.9
Hip (in)	34.6	35.8	37.4	40.5	42.1

Use a measuring tape and hold the tape securely around for key points.

- (A) **Bust.** Measure over the fullest area of the bust & straight around the back.
- (B) **Underbust.** Measure directly under the bust & straight around the back.
- (C) **Waist.** The waist is below the abdomen between the rib cage and hips.
- (D) **Hip.** Measure the fullest part of the hip ensuring the tape is straight around the body.

Women's Active Price List - Tops Ready Design

Code	Carvico VITA Power (ECONYL®) △	Bali Swim Juno
	Solid	Solid
BSWA-T38	\$23 ⁹⁵	\$22 ⁹⁵
BSWA-T37	\$17 ⁹⁵	\$16 ⁹⁵
BSWA-T36	\$19 ⁹⁵	\$18 ⁹⁵
BSWA-T35	\$18 ⁹⁵	\$18 ⁹⁵
BSWA-T34	\$17 ⁹⁵	\$16 ⁹⁵
BSWA-T26	\$20 ⁹⁵	-
BSWA-T25	\$19 ⁹⁵	-
BSWA-T21	\$19 ⁹⁵	-
BSWA-T20	\$21 ⁹⁵	-
BSWA-T19	\$19 ⁹⁵	-
BSWA-T18	\$18 ⁹⁵	-
BSWA-T16	\$19 ⁹⁵	-
BSWA-T15	\$20 ⁹⁵	-
BSWA-T13	\$22 ⁹⁵	-
BSWA-T11	\$22 ⁹⁵	-
BSWA-T10	\$17 ⁹⁵	-
BSWA-T08	\$17 ⁹⁵	-
BSWA-T06	\$19 ⁹⁵	-
BSWA-T05	\$20 ⁹⁵	-

Women's Active Price List - Bottoms Ready Design

Code	Carvico VITA Power (ECONYL®) ♻️	Bali Swim Juno
	Solid	Solid
BSWA-B38	\$17 ⁹⁵	\$17 ⁹⁵
BSWA-B36	\$25 ⁹⁵	\$23 ⁹⁵
BSWA-B35	\$25 ⁹⁵	\$23 ⁹⁵
BSWA-B34	\$24 ⁹⁵	\$22 ⁹⁵
BSWA-B26	\$19 ⁹⁵	-
BSWA-B25	\$27 ⁹⁵	-
BSWA-B21	\$29 ⁹⁵	-
BSWA-B20	\$21 ⁹⁵	-
BSWA-B19	\$25 ⁹⁵	-
BSWA-B18	\$25 ⁹⁵	-
BSWA-B16	\$20 ⁹⁵	-
BSWA-B15	\$25 ⁹⁵	-
BSWA-B13	\$25 ⁹⁵	-
BSWA-B11	\$25 ⁹⁵	-
BSWA-B10	\$19 ⁹⁵	-
BSWA-B08	\$21 ⁹⁵	-
BSWA-B06	\$24 ⁹⁵	-
BSWA-B05	\$19 ⁹⁵	-

Women's Active Price List - Jumpsuits

Ready Design

Code	Carvico VITA Power (ECONYL®) ♻	Bali Swim Juno
	Solid	Solid
BSWA-S06	\$32 ⁹⁵	\$29 ⁹⁵
BSWA-S05	\$22 ⁹⁵	\$21 ⁹⁵
BSWA-S04	\$23 ⁹⁵	\$22 ⁹⁵
BSWA-S02	\$25 ⁹⁵	-
BSWA-S01	\$24 ⁹⁵	-





Starter Kits

We've helped hundreds of swim and apparel labels successfully launch their brands from scratch. Our Starter Kits are a compilation of useful tools for you to kick start your journey.

[View Starter Kits](#)





Fabrics

We offer a wide range of fabrics and constantly add new fabrics in tune with current trends for you to choose from. All our fabrics are tested by us and all have the quality to make a high-end product.

See latest fabric range and colors [here](#)



Packaging

Put the finishing touch on your products with our wide range of labelling options: hang tags, labels, hygiene liners and bags.

Helpful tip: Develop your labelling during the sampling stage/early - so that it doesn't hold you up later.

View our latest packing options [here](#)





Shipping

We usually send all products with DHL or similar level courier. From our experience it's the most reliable way to send products: both samples and bulk production to ensure safe and quick delivery to our customers.

We want to see your products arrive whole, and in time.

Sample Shipment

Lead Time

4-5 business days worldwide.

Cost

US\$50-150 per shipment depending how many samples in the box and where you are located.

Bulk Shipment

Lead Time

4-5 business days worldwide + custom clearing (1-3 days usually).

Cost per 80-150 pcs (depending on style)

Australia: ~US\$150

USA: ~US\$190

Europe: ~US\$220

These numbers are based on our last months shipments to a variety of destinations and sizes. Exact prices will be settled when we ship.



Frequently Asked Questions

I'm new to Active wear and Lounge wear and want to run my own business.

Do you have any tips?

Grab our [Starter Kit](#)! With that in hand, you'll have everything you need to get going.

Is your production ethical? Sustainable?

At the heart of Bali Swim is our constant endeavor to improve the lives of people and the state of our planet. Read more [here](#).

What is your MOQ for samples?

We don't require a MOQ – our goal is to make your ordering process easy and convenient. Get your ready design samples (and bulk) on shop.baliswim.com now!

What is your MOQ for manual bulk re-orders?

200pcs – if you re-order the same styles within 6 months, you won't be subjected to a surcharge.

What are your payment terms for manual orders?

50% deposit and 50% before delivery. You can submit your payments with PayPal (links to CC also) or through a bank transfer.

For new clients, we require a 100% deposit up front for your first order. This only applies once to your first order with us. With PayPal, you have Buyer Protection.

How long does it take to produce an order (lead times)?

Orders on shop.baliswim.com:

- Samples: 3 days (in stock fabrics)
- Bulk: 6 weeks (in stock fabrics)

Samples: 1-3 weeks* (Ready Design)

Samples: 4-8 weeks* (Custom Design)

Bulk production 6-8 weeks*

Shipping: 4-5 business days worldwide (DHL)

Full cycle (start to finish)

- 1-3 months* (Ready Design)
- 3-6 months* (Custom Design)

When using imported fabrics, you should add 3-4 weeks onto the timeline to allow shipping time depending on the type of fabric.

*Current conditions apply to all lead times including fabric availability, current load, holidays and other variables. Lead times will be confirmed by sales to you directly at order times.

What other collections do you make?

We have expanded our range of collection through the years. See our catalog at baliswim.com

What kind of products or design elements do you not yet work with?

As we grow as a company, we have built a network of reliable and trustworthy suppliers. We also have a sourcing service where we can find the right product for you. See our service [here](#).

How are my designs kept safe?

In our Terms & Conditions, we have a segment about Confidentiality (NDA), which protects your Intellectual Property (IP), such as information about you, your business, and your designs. You can read our full T&C [here](#) to understand just how we keep your designs safe.

Is bulk production a must if I sample with you?

No! When you order with us, there is absolutely no obligation to complete a bulk order after producing a sample. You also own your patterns that we develop for you.

What file format for CAD do you work with?

DXF and DGS.

What are your Terms & Conditions?

Please read our T&C by clicking [here](#).

How does it work when I order full rolls of imported Italian fabrics?

If you want to order colors of Carvico or JL that is not in our stock, we have to order full rolls. We make the purchase for you, but you are responsible for covering the full and complete cost of these materials before your purchase. When you use the fabric later on in production, we deduct the value of the fabric used against the production. You can see it as a pre-paid credit.

However, if you choose to save some fabric or not use it all, that means you have fabric that is left in our warehouse, which we will keep for future orders. When you use that fabric later on for a future order, we will credit the value for that next order.

Example: You've placed a total order of \$10,000 and in this bulk production, we are using your saved fabric rolls at value of \$3000 – then that amount will be deducted from your next order so you'll have a value of \$7000 remaining.

Who are your clients?

At Bali Swim, client confidentiality is non-negotiable.

We do not disclose client names, designs, or any identifying brand details, in strict accordance with our [Terms & Conditions](#). Many of our clients — particularly those in the luxury segment — request to keep their manufacturing partnerships private, and we fully respect that.

While we showcase a few selected public reviews, these are voluntarily shared and carefully presented without naming any brands.

Each year, we support the growth of over 100 swimwear labels across North America, Europe, Australia and Asia — from first-time founders to established brands.

Your privacy is our priority, always.

Can we visit you in Bali?

Of course! Our 2000 sqm superfactory hosts all of our operation for you to visit and see. We have private showrooms where you can meet your rep or merchandiser in comfort for an in-depth design and manufacturing discussion and do fitting of your samples. We are located in west Denpasar on a major road for easy and quick access from any location in Bali. To visit our factory please make an appointment first, [here](#).

**We donate 10 cents
per active and lounge set**

**to clean up
our oceans**

Read more about our ethical and
sustainable methods [here](#).

baliswim.com
info@baliswim.com
[+62 813-3888-8585](tel:+6281338888585)

BaliSwim

