

# Active + Lounge Catalog

2024 Edition

A woman with blonde hair tied back is posing on a white rectangular pedestal. She is wearing a dark green, form-fitting athletic set consisting of a sports bra with a cutout and leggings. She is also wearing white sneakers. Her right leg is bent and resting on the pedestal, while her left leg is extended to the ground. Her arms are raised, with her hands behind her head. The background is a plain, light gray.

**BaliSwim**

**Your Active Line. Easy.**  
[baliswim.com](https://baliswim.com)

We get you started, forecast trends, source, develop, produce and make manufacturing so much easier:

**Starter Kits**

**How-to Guides**

**Fabrics & Prints**

**Hardware Eco-options**

**Pattern Making**

**Ready Design**

**Online Bulk & Sample Shop**

**Fits & Re-fits**

**Grading**

**Bulk Production**

**Quality Control**

**Packaging & Shipping**

## We cover it all

---

At Bali Swim we are dedicated to helping entrepreneurs succeed and strive to provide you with the tools, resources, strategies, and guidance that you need to create quality brands - just like our Starter Kits and this catalog!

We are here to modernize swim and apparel manufacturing industry - and offer low minimum orders, an innovative online shop for sample and bulk orders, on-trend and customizable ready designs, eco options for almost everything that we offer, and a transparent and open factory door policy.

Every order with us supports grassroots organizations that advance women's education and the environment; and we have implemented business development and hiring practices that raise the standards for women, health and income in our industry.

We also work hard to bridge any gap and offer weekly Instagram Live Q&As, easy to schedule video calls, and staff that are ready to guide you through all of our steps.

**At Bali Swim, we work to make entrepreneurship accessible, dependable, and fulfilling for you and our worldwide community.**



## Shop Active and Lounge

---

**Easiest & quickest way to create  
your luxe brand.**

Millions of ready design options with your custom brand label.

**[SHOP.BALISWIM.COM](https://shop.baliswim.com)**





# Step-by-step

Preparation

Sampling Stage  
1-3 Months

Production Stage  
2-3 Months

Delivery





## Ready Design

Buy samples and bulk on  
[shop.baliswim.com](https://shop.baliswim.com) now!

Ready Design is our ready-to-go collection of activewear and loungewear designs. Choose the pieces you like, put your brand on them – and they're ready to sell! Each year we conduct extensive research on what style is in, what's out, and what the upcoming trends are for the season ahead. From that we create a collection of designs – both on trend and re-worked classics.

You can mix and match tops, shorts and leggings between any styles. You could even combine them with your custom designs to flesh out your line. All styles are available in our full range of fabrics, in all colors and in any print. There are no development costs (pattern making & grading) with ready design. You only pay per piece. It's the quickest, simplest and most affordable method to manufacture a label.

---

## Custom Design

Custom Design is where your ideas shine! For us to develop your dream athletic or sport piece we want to understand your ideas clearly. Ideally this means complete tech specs + patterns or samples of what you want to develop. But since we also work with non-designers we are definitely flexible. We have templates example (which we call sample specs) with clear instructions for how to start and what we need from you. This could include pictures of products you like with notes on any adjustments. We'll happily guide you.

**Extra Notes** Feel free to take design inspiration from our Ready Design range – taking parts from one design and adding to another or combining them with your own ideas.

Women's Active - Average Bulk Prices CUSTOM DESIGN | +/- 50% | US\$

Fabric	Carvico VITA Power (ECONYL®) ♻️	Carvico Aspen Heavy	Bali Swim Fit	Bali Swim Active Rib	Bali Swim Viscose
Type	Solid	Print	Print	Solid	Solid
Tops	\$20 <sup>95</sup>	\$23 <sup>95</sup>	\$19 <sup>95</sup>	\$19 <sup>95</sup>	\$17 <sup>95</sup>
Shorts	\$21 <sup>95</sup>	\$23 <sup>95</sup>	\$19 <sup>95</sup>	\$15 <sup>95</sup>	\$13 <sup>95</sup>
Leggings	\$25 <sup>95</sup>	\$28 <sup>95</sup>	\$23 <sup>95</sup>	\$16 <sup>95</sup>	\$19 <sup>95</sup>
Suits	\$24 <sup>95</sup>	\$27 <sup>95</sup>	\$23 <sup>95</sup>	\$17 <sup>95</sup>	\$18 <sup>95</sup>

Women's Lounge - Average Bulk Prices CUSTOM DESIGN | +/- 50% | US\$

Fabric	Bali Swim Baby Terry	Bali Swim Terry Towel	Bali Swim Organic French Terry	Bali Swim Ecovero RIB	Bali Swim Viscose
Type	Solid	Solid	Solid	Solid	Solid
Tops	\$17 <sup>95</sup>	\$18 <sup>95</sup>	\$19 <sup>95</sup>	\$15 <sup>95</sup>	\$22 <sup>95</sup>
Bottoms	\$17 <sup>95</sup>	\$19 <sup>95</sup>	\$20 <sup>95</sup>	\$15 <sup>95</sup>	
Dresses	\$22 <sup>95</sup>	\$24 <sup>95</sup>	\$26 <sup>95</sup>	\$19 <sup>95</sup>	

	Service	Price, US\$	Comments
Product Development	Custom Design Development Fee	\$69/design (100% credited to bulk)	We offer this service for you to develop your own custom designs from scratch, including pattern making and size range grading. This fee will be fully credited from your bulk order for each the designs you develop. Any revision to your custom design is not included in this fee.
	Custom Design Sample Fee	3X Bulk Price	Make samples to develop your own design. The fee includes one sample we send to you, and one copy we keep with us, so you don't have to return your sample, saving you time and costs in development.
	Custom Design Additional Revision Fee	\$39/revision	If any revision is needed after the first development. Charged per every round of revision.
	Pre-Production Sample (PPS)	2X Bulk Price	Order with production, delivered early. Max 20PPS and 1 size per style/color/print. Additional sizes or 20+ counts as regular sample (3X)
	Ready Design Sample Fee	3X Bulk Price	No development cost, pay per pieces. Make samples to test colors, prints and hardware for Ready Design Refer to Ready Design price lists.
Prints & Graphics	Print Strike(s) & Mock-up	\$25	Digital mock-up of print at different scales on bikini model + test print on fabric.
	Print Placement (Rare)	\$35/style/size	Only for prints with a set specific layout on product. Development cost to finalize pattern digitally and placing print according to spec.
	Logo Re-work (Optional)	\$35	If your logo is of low resolution, file corrupt, or need other adjustment or even re-creation. One-time charge.
	Packaging Development	\$10/design	Includes layout of logo/tagline/website on packaging option, mock-up for approval and actual sample.
	Other Graphic Work	\$25/hour	

# MOQ Per Order

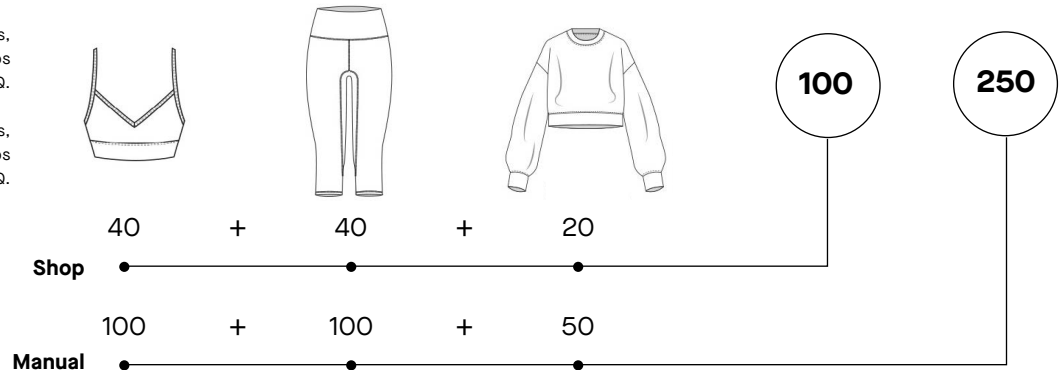
**Samples**  
No MOQ.

**Shop**  
MOQ 100 pcs/order.

**Manual (Custom Design or Mix)**  
MOQ 250 pcs/order.

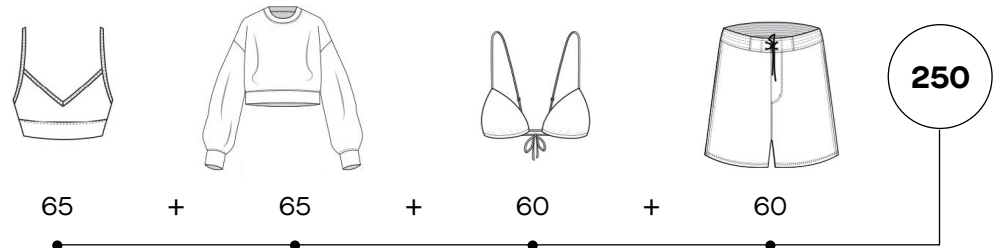
Example: You can order 40 active tops,  
40 active bottoms, and 20 lounge tops  
to reach our Shop Order MOQ.

You can order 100 active tops,  
100 active bottoms, and 50 lounge tops  
to reach our Manual Order MOQ.



You can mix  
women's active, women's  
lounge, women's swim, and  
men's swim to reach our  
MOQ. We count the pcs  
together.

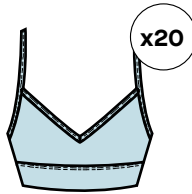
Example: You can order 65 active  
tops, 65 lounge tops, 60 bikini tops,  
and 60 men's shorts.



## MOQ Per Style/Color/Print

Our MOQ per style and color/print is 20pcs.

Example: If you want a particular active top in blue, sand and leopard print, you have to order at least 20 pcs of each.



Blue Tops



Sand Tops



Printed Tops

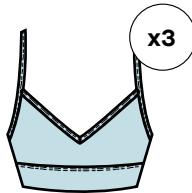
## MOQ Per Size

Our MOQ per size 3 pcs.

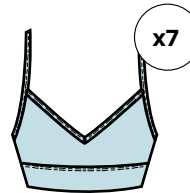
You need to order minimum 3 of each size you want your active top in.

Example: If you want your blue active top in a size range of XS-L, then you can order 3XS, 7S, 7M, and 3L.

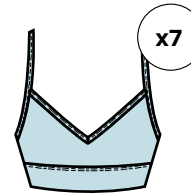
You can order more however you like, and use any size range you prefer, but for whatever size you choose, you need to order at least 3 pcs.



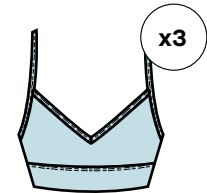
XS



S



M



L





# Ready Design 2024

---

**You can buy samples  
and bulk right now at  
[shop.baliswim.com](https://shop.baliswim.com)!**

Mix and match tops, shorts and leggings between any styles as you wish. You could even combine our designs with your own designs to complete your line. Take the designs as they are (and add your choice of colors and prints) and there will be no development fees (pattern making & grading).

You only pay for what you order (the full price list can be seen at the end of this catalog).

If you want other cuts or to adjust the design of our styles in other ways, you can - but we'll treat it as a custom design and we need to re-develop the style from scratch, this would include development fees.

Adding or switching a small accessory detail is most likely accepted without re-development. Do ask us, and we'll let you know.

We will be releasing new designs yearly, both classics and on-trend.



Sets

## How to read this catalog

(A) Product Categories

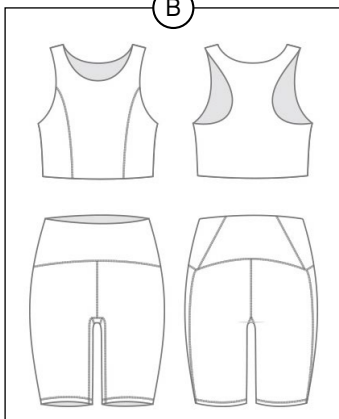
(B) Technical Drawings

(C) Product Details

(A)

● Gym-To-Street Active

(B)



Front Image



Side Image



Back Image



TOP

### BSWA-T04

#### Style Details:

- Singlet style bra
- Round crew neck
- Princess line panel
- Racer back style
- Medium support

**Stitching:** Seamless, Cover stitch

**Padding:** Removable padding hole -  
Padding can be added with extra cost

BOTTOM

### BSWA-B04

#### Style Details:

- Basic shorts
- Mid rise waist
- Back waist and bum detail
- Back curved waistband
- Triangle gusset

**Stitching:** Cover stitch

**Length:** Short (On photo)

**Rise:** Mid (On Photo)

(C)



## Women's Active

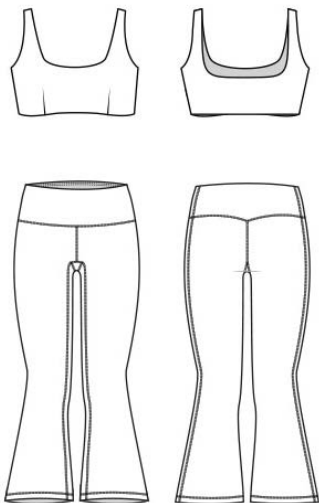
---

Capturing the growing market for Women's Activewear, we ensure that our line of ready-design selections are made to be fashionable, durable, and versatile for various physical activities, from yoga and pilates, to cardio and weight lifting. What sets our Activewear apart is that we offer you the manufacturing power using genuine recycled nylon and polyester ECONYL® fabrics that can strengthen your brand tremendously across your eco-conscious markets. We have the experience of creating designs that match closely with your vision. From small tweaks to our ready design bottoms, with options such as waistband rise and hidden pockets, to a designed-from-scratch tight short leggings and gym shorts that can be worn as everyday clothes.

**Sets**



● Yoga Athleisure



TOP

**BSWA-T33**

**Fabric:** BS Viscose

**Style Details:**

- Scoop neck top
- Bra style
- Double layered top

**Stitching:** Seamless

**Padding:** Not possible

BOTTOM

**BSWA-B33**

**Fabric:** BS Viscose

**Style Details:**

- Flare legging
- Triangle gusset
- Double layered waistband

**Stitching:** Cover stitch, Basic hem stitch

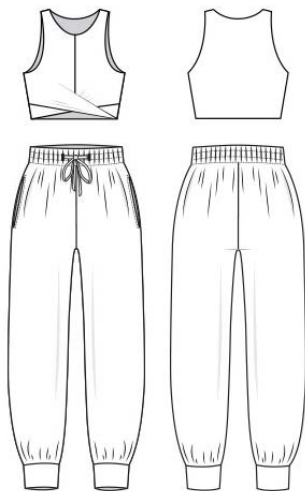
**Length:** 7/8 length (On photo)

**Rise:** Mid (On Photo)





● Yoga Athleisure



TOP

**BSWA-T32**

**Fabric:** BS Viscose

**Style Details:**

- Twisted front detail
- Crop length
- Round crew neck
- Double layered

**Stitching:** Seamless

**Padding:** Not on style - Can be added

BOTTOM

**BSWA-B32**

**Fabric:** BS Viscose

**Style Details:**

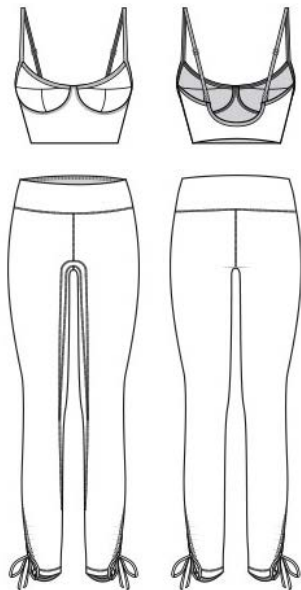
- Jogger pants
- Elastic waistband with drawstring
- Side pocket
- Banded hem

**Stitching:** Basic hem stitch, binding or seamless on ankle

**Length:** Full length (On photo)

**Rise:** Mid (On Photo)

● Yoga Athleisure



TOP

**BSWA-T31**

**Fabric:** BS Viscose

**Style Details:**

- Adjustable shoulder straps
- Bralette style
- Deep scoop back
- Double layered cups

**Stitching:** Seamless, Binding hem, Cover stitch

**Padding:** Not possible

**Hardware:** Ring & Slider

BOTTOM

**BSWA-B31**

**Fabric:** BS Viscose

**Style Details:**

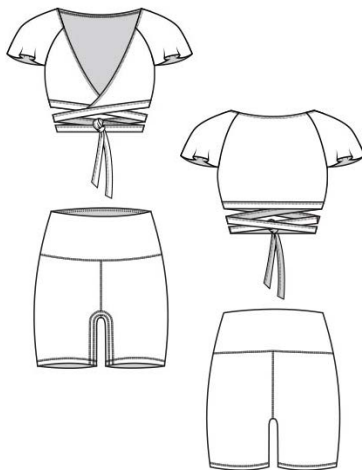
- Side ruched drawstring hem
- Full length
- H shape gusset
- Double layered waistband

**Stitching:** Cover stitch, Basic hem stitch

**Length:** Full length (On photo)

**Rise:** Mid (On Photo)

## ● Yoga Athleisure



## TOP

**BSWA-T30****Fabric:** BS Viscose**Style Details:**

- Flounce sleeves
- Wrap around tie
- Crop length
- Double layered front

**Stitching:** Lettuce hem sleeves, Basic hem stitch neckline, binding stitch straps**Padding:** Not possible

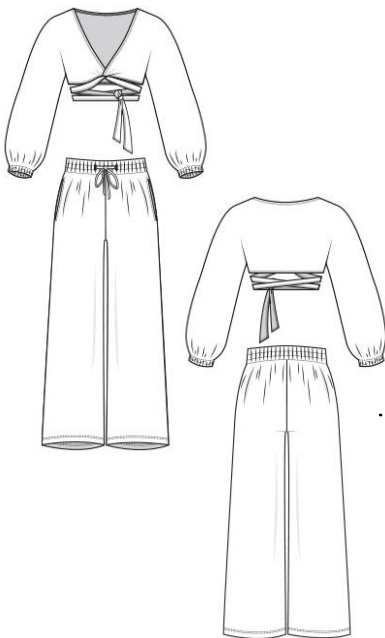
## BOTTOM

**BSWA-B30****Fabric:** BS Viscose**Style Details:**

- Basic biker shorts
- Mid-rise with double layered waistband
- H shape gusset

**Stitching:** Cover stitch**Length:** Short (On photo)**Rise:** Mid (On Photo)

● Yoga Athleisure



TOP

### BSBA-T29

**Fabric:** BS Viscose

**Style Details:**

- Long puffy dolman sleeves
- Wrap around tie
- Crop length
- Elasticated sleeve hem

**Stitching:** Basic hem stitch

**Padding:** Not possible

BOTTOM

### BSBA-B29

**Fabric:** BS Viscose

**Style Details:**

- Wide leg pants
- Elastic waistband with drawstring
- Side pocket

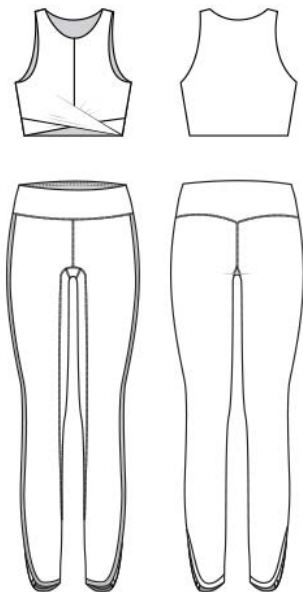
**Stitching:** Basic hem stitch

**Length:** Full length (On photo)

**Rise:** Mid (On Photo)



## ● Gym-To-Street Active



## TOP

**BSWA-T28****Style Details:**

- Front twist bra
- Round crew neck
- Long line style
- Low to medium support

**Stitching:** Seamless**Padding:** Removable padding hole -  
Padding can be added with extra cost

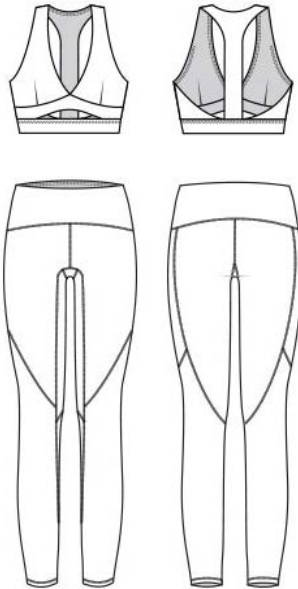
## BOTTOM

**BSWA-B28****Style Details:**

- Binded legging
- Binded side seam and hem detail
- Back curved waistband
- Mid rise waist
- Triangle gusset

**Stitching:** Cover stitch, Double stitch binding**Length:** 7/8 Length (On photo)**Rise:** Mid (On Photo)

● Gym-To-Street Active



TOP

**BSWA-T27**

**Style Details:**

- Front cut out strap bra
- Low V-neck
- T-back style
- Underbust band
- Low support

**Stitching:** Seamless, Cover stitch

**Padding:** Removable padding hole -  
Padding can be added with extra cost

BOTTOM

**BSWA-B27**

**Style Details:**

- Paneled legging
- Front and back curved waistband
- Front and back paneled detail
- Mid rise waist
- Triangle gusset

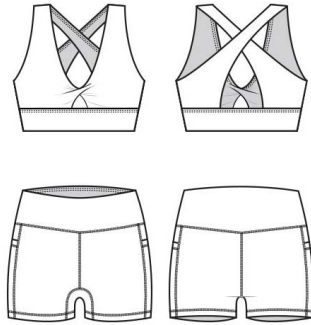
**Stitching:** Cover stitch

**Length:** 7/8 Length (On photo)

**Rise:** Mid (On Photo)



● Gym-To-Street Active



TOP

### BSWA-T26

**Style Details:**

- Front twist bra
- Low scoop neck
- Criss-cross cut out back
- Long line style
- Underbust band
- Medium support

**Stitching:** Seamless, Cover stitch

**Padding:** Removable padding hole -  
Padding can be added with extra cost

BOTTOM

### BSWA-B26

**Style Details:**

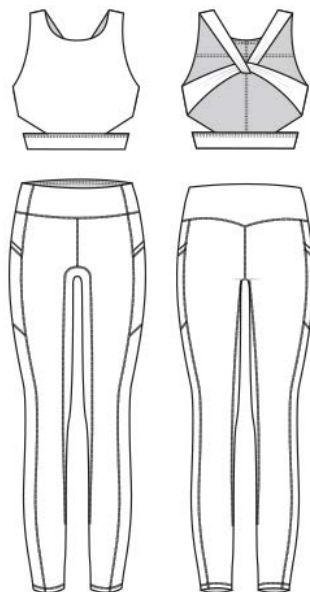
- Side pocket booty shorts
- Side panel and pocket
- Mid rise waist
- Back triangular waistband
- Triangle gusset H-shaped

**Stitching:** Cover stitch

**Length:** Short (On photo)

**Rise:** Mid (On Photo)

## ● Gym-To-Street Active



## TOP

**BSWA-T25****Style Details:**

- Looped strap bra
- Round crew neck
- Side and back cut out strap detail
- Low to medium support

**Stitching:** Seamless, Cover stitch

**Padding:** Removable padding hole -  
Padding can be added with extra cost

## BOTTOM

**BSWA-B25****Style Details:**

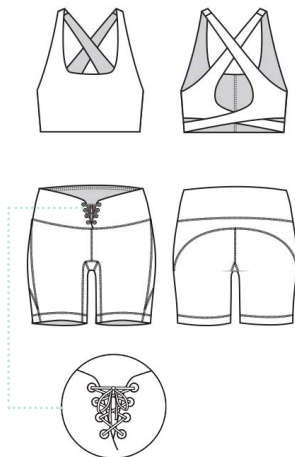
- Side pocket leggings
- Side panel and pocket
- Mid rise waist
- Back curved waistband
- H-shaped gusset

**Stitching:** Cover stitch

**Length:** 7/8 Length (On photo)

**Rise:** Mid (On Photo)

● Gym-To-Street Active



TOP

**BSWA-T24**

**Style Details:**

- Teardrop bra
- Back cut out detail
- Square neck
- Medium support

**Stitching:** Seamless

**Padding:** Removable padding hole -  
Padding can be added with extra cost

BOTTOM

**BSWA-B24**

**Style Details:**

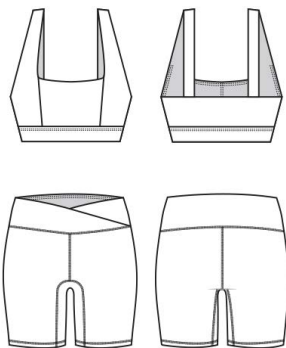
- Laced up shorts
- Mid rise waist
- Back curved bum detail
- Straight waistband
- Triangle gusset

**Stitching:** Cover stitch

**Length:** Standard (On photo)

**Rise:** Mid (On Photo)

● Gym-To-Street Active



TOP

### BSWA-T23

**Style Details:**

- Square neck bra
- Princess line panel
- Underbust band
- Medium support

**Stitching:** Seamless

**Padding:** Removable padding hole -  
Padding can be added with extra cost

BOTTOM

### BSWA-B23

**Style Details:**

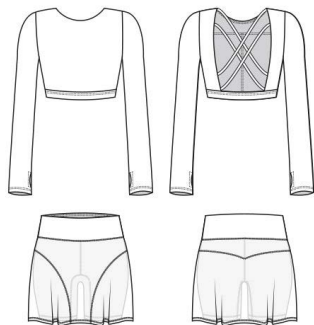
- Overlap waistband shorts
- Mid rise waist
- H-shaped gusset

**Stitching:** Cover stitch

**Length:** Standard (On photo)

**Rise:** Mid (On Photo)

● Gym-To-Street Active



TOP

**BSWA-T22**

**Style Details:**

- Long sleeved top
- Back criss cross detail
- Underbust band
- Thumbhole on sleeve
- Low to medium support

**Stitching:** Seamless, Cover stitch

**Padding:** Removable padding hole -  
Padding can be added with extra cost

BOTTOM

**BSWA-B22**

**Style Details:**

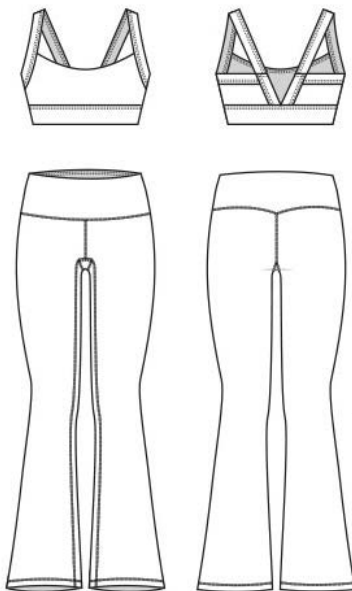
- Paneled skirt
- Mid rise waist
- Side curved panel with flare
- Back curved bum panel
- Double shorts lining
- Straight waistband

**Stitching:** Cover stitch

**Length:** Short (On photo)

**Rise:** Mid (On Photo)

● Gym-To-Street Active



TOP

**BSWA-T21**

**Style Details:**

- Low V-back bra
- Round neck
- Underbust band
- Low to medium support

**Stitching:** Seamless

**Padding:** Removable padding hole -  
Padding can be added with extra cost



BOTTOM

**BSWA-B21**

**Style Details:**

- Flare legging
- Back curved waistband
- Triangle gusset

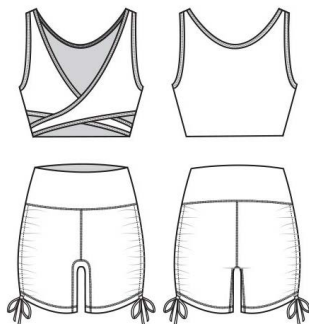
**Stitching:** Cover stitch

**Length:** 7/8 Length (On photo)

**Rise:** Mid (On Photo)



● Gym-To-Street Active



TOP

### BSWA-T20

**Style Details:**

- Cut out bra
- Low V-neck
- Front cut out detail
- Low support

**Stitching:** Seamless, Cover stitch

**Padding:** Removable padding hole -  
Padding can be added with extra cost

BOTTOM

### BSWA-B20

**Style Details:**

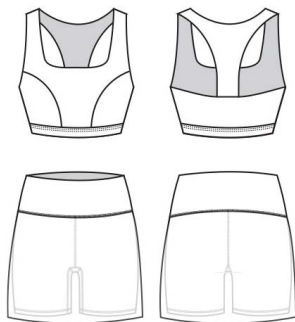
- Side gathered booty shorts
- Straight waistband
- H-shaped gusset

**Stitching:** Cover stitch

**Length:** Short (On photo)

**Rise:** Mid (On Photo)

● Gym-To-Street Active



TOP

### BSWA-T19

**Style Details:**

- T-back bra
- Square neck
- Princess line curved panel
- Underbust band
- Low to medium support

**Stitching:** Seamless, Cover stitch

**Padding:** Removable padding hole -  
Padding can be added with extra cost

BOTTOM

### BSWA-B19

**Style Details:**

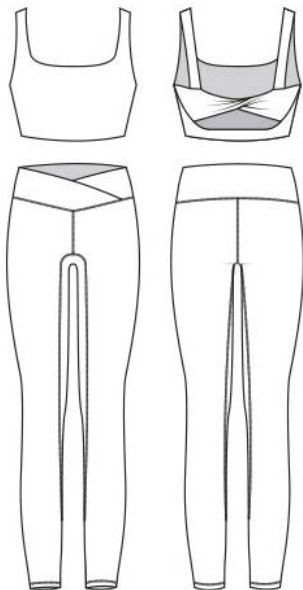
- Skort
- Mid rise waist
- Flare skirt
- Double shorts lining
- Straight waistband

**Stitching:** Cover stitch

**Length:** Short (On photo)

**Rise:** Mid (On Photo)

● Gym-To-Street Active



TOP

**BSWA-T18**

**Style Details:**

- Back twist bra
- Square neck
- Back cut out strap detail
- Low to medium support

**Stitching:** Seamless

**Padding:** Removable padding hole -  
Padding can be added with extra cost

BOTTOM

**BSWA-B18**

**Style Details:**

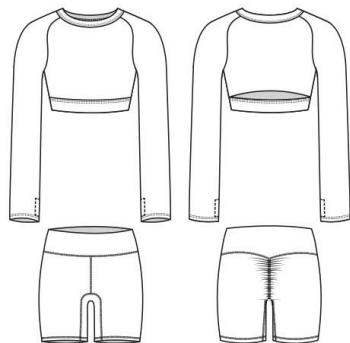
- Overlap waistband leggings
- Mid rise waist
- H-shaped gusset

**Stitching:** Cover stitch

**Length:** 7/8 Length (On photo)

**Rise:** Mid (On Photo)

● Gym-To-Street Active



TOP

**BSWA-T17**

**Style Details:**

- Long sleeved top
- Round crew neck
- Raglan sleeve
- Back cut out strap detail
- Thumbhole on sleeve
- Underbust band
- Low to medium support

**Stitching:** Seamless, Cover stitch

**Padding:** Removable padding hole -  
Padding can be added with extra cost

BOTTOM

**BSWA-B17**

**Style Details:**

- Back scrunched shorts
- Mid rise waist
- Back curved waistband
- H-shaped gusset

**Stitching:** Cover stitch

**Length:** Short (On photo)

**Rise:** Mid (On Photo)

● Gym-To-Street Active



TOP

### BSWA-T16

**Style Details:**

- Criss cross bra
- Low round neck
- Back cut out detail
- Underbust band
- Low to medium support

**Stitching:** Seamless, Cover stitch

**Padding:** Removable padding hole -  
Padding can be added with extra cost

BOTTOM

### BSWA-B16

**Style Details:**

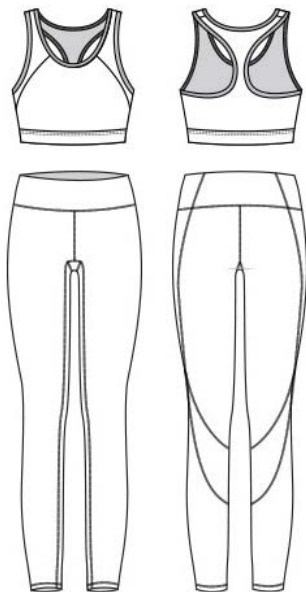
- Front paneled shorts
- Mid rise waist
- Back panel bum detail
- Straight waistband
- Back yoke detail
- Triangle gusset

**Stitching:** Cover stitch

**Length:** Standard (On photo)

**Rise:** Mid (On Photo)

## ● Gym-To-Street Active



## TOP

**BSWA-T15****Style Details:**

- Racer back bra
- Round neck
- Front curved panel detail
- Underbust band
- Low to medium support

**Stitching:** Cover stitch**Padding:** Removable padding hole -  
Padding can be added with extra cost

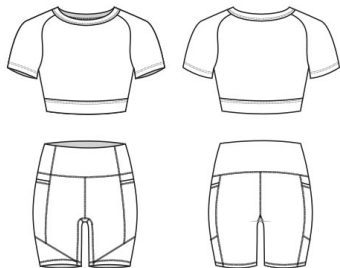
## BOTTOM

**BSWA-B15****Style Details:**

- Paneled legging
- Back curved panel detail
- Straight waistband
- Triangle gusset

**Stitching:** Cover stitch**Length:** 7/8 Length (On photo)**Rise:** Mid (On Photo)

● Gym-To-Street Active



TOP

**BSWA-T14**

**Style Details:**

- Short sleeved top
- Round crew neck
- Raglan sleeve
- Underbust band
- Low to medium support

**Stitching:** Cover stitch

**Padding:** Removable padding hole -  
Padding can be added with extra cost

BOTTOM

**BSWA-B14**

**Style Details:**

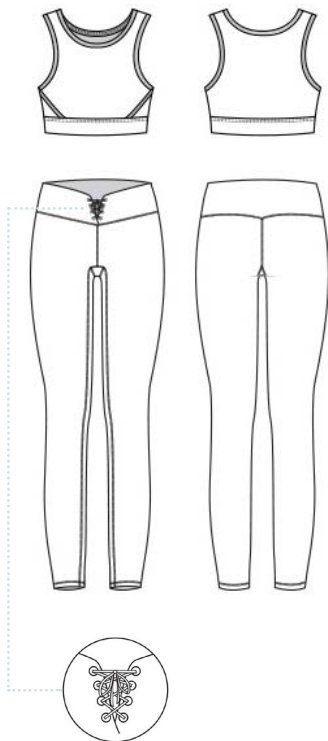
- Side pocket shorts
- Side panel and pocket
- Bottom triangular panel
- Straight waistband
- Triangle gusset

**Stitching:** Cover stitch

**Length:** Standard (On photo)

**Rise:** Mid (On Photo)

## ● Gym-To-Street Active



## TOP

**BSWA-T13****Style Details:**

- Side overlap bra
- Long line style
- Side seam overlap style
- Underbust band
- Low to medium support

**Stitching:** Seamless, Binding stitch

**Padding:** Removable padding hole -  
Padding can be added with extra cost

## BOTTOM

**BSWA-B13****Style Details:**

- Laced up legging
- Mid rise waist
- Back curved waistband
- Triangle gusset

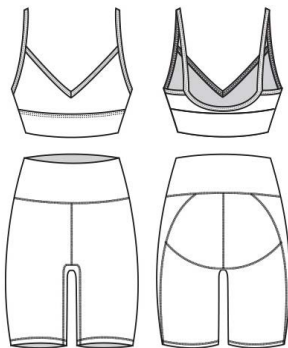
**Stitching:** Cover stitch

**Length:** 7/8 Length (On photo)

**Rise:** Mid (On Photo)



● Gym-To-Street Active



TOP

### BSWA-T12

**Style Details:**

- Low back strappy bra
- Low V-neck
- Scoop back neck
- Underbust band
- Low support

**Stitching:** Seamless, Binding stitch

**Padding:** Removable padding hole -  
Padding can be added with extra cost

BOTTOM

### BSWA-B12

**Style Details:**

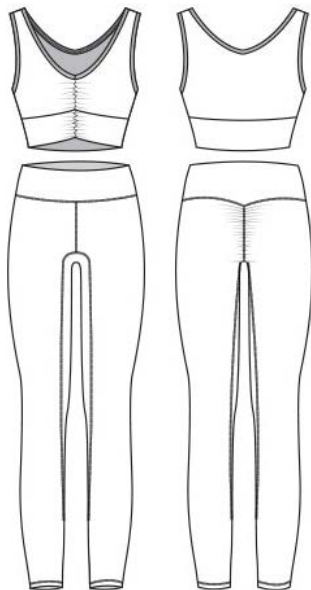
- Back detail shorts
- Back panel bum detail
- Mid rise waist
- Straight waistband
- H-shaped gusset

**Stitching:** Cover stitch

**Length:** Standard (On photo)

**Rise:** Mid (On Photo)

● Gym-To-Street Active



TOP

### BSWA-T11

**Style Details:**

- Low V-neck bra
- Front scrunched detail
- Long line style
- Underbust band
- Low support

**Stitching:** Binding Stitch, Zig Zag Stitch

**Padding:** Removable padding hole -  
Padding can be added with extra cost

BOTTOM

### BSWA-B11

**Style Details:**

- Back scrunched legging
- Mid rise waist
- Back curved waistband
- H-shaped gusset

**Stitching:** Cover stitch

**Length:** 7/8 Length (On photo)

**Rise:** Mid (On Photo)

● Gym-To-Street Active



TOP

### BSWA-T10

**Style Details:**

- Low neck strappy bra
- T-back style
- Underbust band
- Low support

**Stitching:** Seamless, Binding stitch

**Padding:** Removable padding hole -  
Padding can be added with extra cost

BOTTOM

### BSWA-B10

**Style Details:**

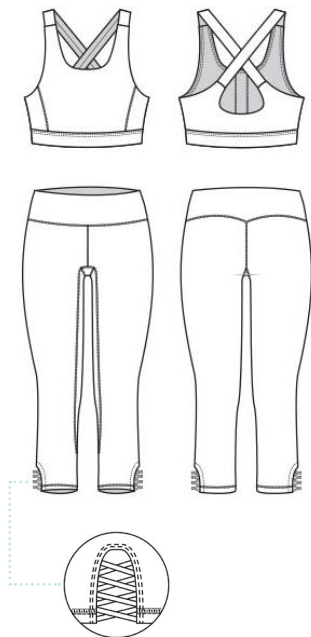
- Side paneled booty shorts
- Back curved bum detail
- Mid rise waist
- Straight waistband
- Triangle gusset

**Stitching:** Cover stitch

**Length:** Short (On photo)

**Rise:** Mid (On Photo)

● Gym-To-Street Active



TOP

**BSWA-T09**

**Style Details:**

- Round neck bra
- Princess line panel
- Criss cross back with teardrop detail
- Underbust band
- Medium support

**Stitching:** Seamless, Cover stitch

**Padding:** Removable padding hole -  
Padding can be added with extra cost

BOTTOM

**BSWA-B09**

**Style Details:**

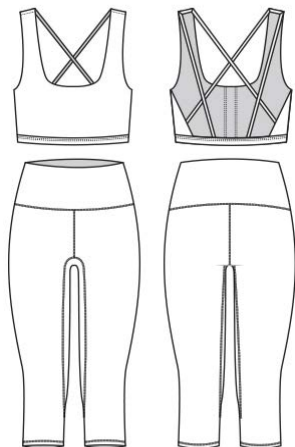
- Criss cross knee legging
- Side criss cross detail
- Mid rise waist
- Back curved waistband
- Triangle gusset

**Stitching:** Cover stitch

**Length:** Below the knee (On photo)

**Rise:** Mid (On Photo)

● Gym-To-Street Active



TOP

**BSWA-T08**

**Style Details:**

- Strappy bra
- Back strappy detail
- Underbust band
- Low support

**Stitching:** Seamless, Cover stitch

**Padding:** Removable padding hole -  
Padding can be added with extra cost

BOTTOM

**BSWA-B08**

**Style Details:**

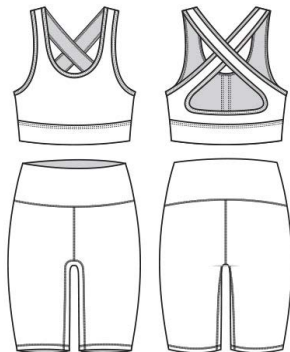
- Basic knee leggings
- Mid rise waist
- Straight waistband
- H-shaped gusset

**Stitching:** Cover stitch

**Length:** Below the knee (On photo)

**Rise:** Mid (On Photo)

● Gym-To-Street Active



TOP

### BSWA-T07

**Style Details:**

- Criss cross bra
- Round neck
- Back cut out teardrop detail
- Underbust band
- Medium support

**Stitching:** Seamless, Binding stitch

**Padding:** Removable padding hole -  
Padding can be added with extra cost

BOTTOM

### BSWA-B07

**Style Details:**

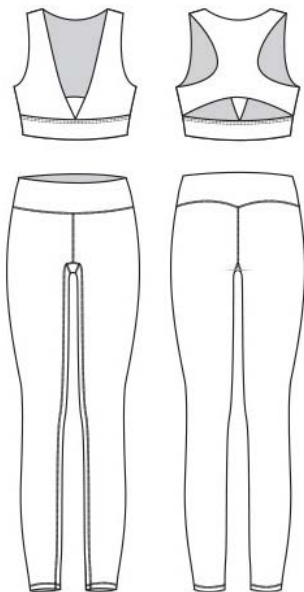
- Basic standard shorts
- Mid rise waist
- Straight waistband
- H-shaped gusset

**Stitching:** Cover stitch

**Length:** Standard (On photo)

**Rise:** Mid (On Photo)

● Gym-To-Street Active



TOP

### BSWA-T06

**Style Details:**

- Plunging V-neck bra
- Racer back style
- Underbust band
- Back cut out strap detail
- Low to medium support

**Stitching:** Seamless, Cover stitch

**Padding:** Removable padding hole -  
Padding can be added with extra cost

BOTTOM

### BSWA-B06

**Style Details:**

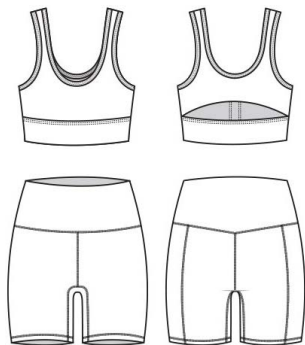
- Basic legging
- Mid rise waist
- Back curved waistband
- Triangle gusset

**Stitching:** Cover stitch

**Length:** 7/8 Length (On photo)

**Rise:** Mid (On Photo)

● Gym-To-Street Active



TOP

### BSWA-T05

**Style Details:**

- Back strap detail bra
- Low square neck
- Back cut out strap detail
- Underbust band
- Low to medium support

**Stitching:** Seamless, Binding Stitch

**Padding:** Removable padding hole -  
Padding can be added with extra cost

BOTTOM

### BSWA-B05

**Style Details:**

- Basic shorts
- Mid rise waist
- Front side panel detail
- Back triangular waistband
- H-shaped gusset

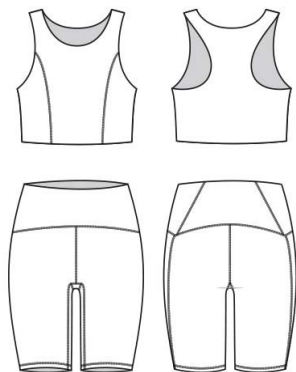
**Stitching:** Cover stitch

**Length:** Short (On photo)

**Rise:** Mid (On Photo)



● Gym-To-Street Active



TOP

### BSWA-T04

**Style Details:**

- Singlet style bra
- Round crew neck
- Princess line panel
- Racer back style
- Medium support

**Stitching:** Seamless, Cover stitch

**Padding:** Removable padding hole -  
Padding can be added with extra cost

BOTTOM

### BSWA-B04

**Style Details:**

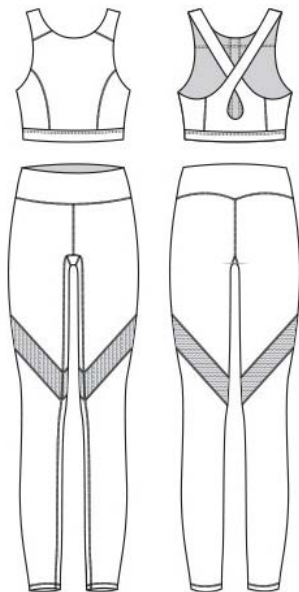
- Basic shorts
- Mid rise waist
- Back waist and bum detail
- Back curved waistband
- Triangle gusset

**Stitching:** Cover stitch

**Length:** Standard (On photo)

**Rise:** Mid (On Photo)

● Gym-To-Street Active



TOP

**BSWA-T03**

**Style Details:**

- Criss cross back bra
- Round crew neck
- Criss cross back with teardrop detail
- Underbust band
- Medium support

**Stitching:** Seamless, Cover stitch

**Padding:** Removable padding hole -  
Padding can be added with extra cost

BOTTOM

**BSWA-B03**

**Style Details:**

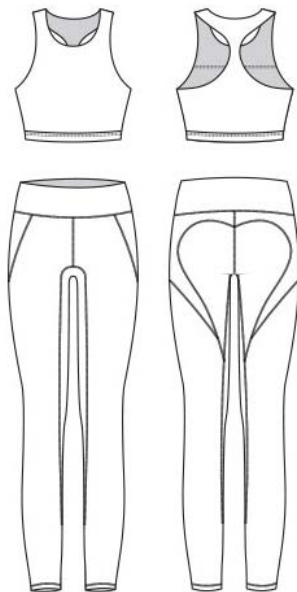
- Mesh legging
- Mid rise waist
- Back curved waistband
- Triangle gusset

**Stitching:** Cover stitch

**Length:** 7/8 Length (On photo)

**Rise:** Mid (On Photo)

● Gym-To-Street Active



TOP

### BSWA-T02

**Style Details:**

- Racer back bra
- Round crew neck
- Underbust band
- Medium support

**Stitching:** Seamless, Cover stitch

**Padding:** Removable padding hole -  
Padding can be added with extra cost

BOTTOM

### BSWA-B02

**Style Details:**

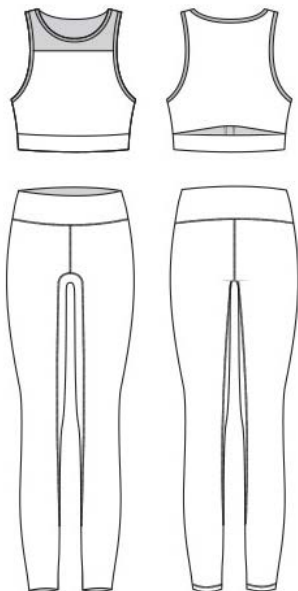
- Heart shaped panel legging
- Mid rise waist
- Straight waistband
- H-shaped gusset

**Stitching:** Cover stitch

**Length:** 7/8 Length (On photo)

**Rise:** Mid (On Photo)

● Gym-To-Street Active



TOP

**BSWA-T01**

**Style Details:**

- Mesh bra
- Round crew neck
- Underbust band
- Back cut out strap detail
- Low to medium support

**Stitching:** Seamless, Binding stitch

**Padding:** Removable padding hole -  
Padding can be added with extra cost



BOTTOM

**BSWA-B01**

**Style Details:**

- Basic legging
- Mid rise waist
- Straight waistband
- H-shaped gusset

**Stitching:** Seamless, Cover stitch

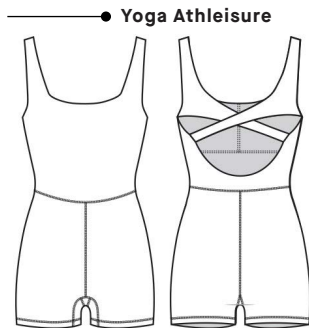
**Length:** 7/8 Length (On photo)

**Rise:** Mid (On Photo)



# Suits





BODYSUIT

### BSWA-S03

**Fabric:**

**Style Details:**

- Low square neck bodysuit
- Criss cross back
- Triangle gusset

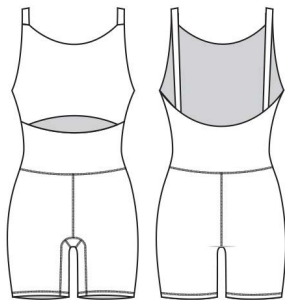
**Stitching:** Seamless, Cover stitch

**Padding:** Not on style - Can be added

**Length:** Short



● Gym-To-Street Active



BODYSUIT

## BSWA-S02

**Style Details:**

- Cut out suits
- Front cut out detail
- Low back
- Low to medium support
- Triangle gusset

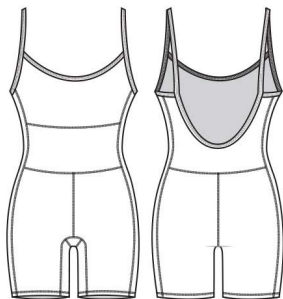
**Stitching:** Seamless, Cover stitch

**Padding:** Removable padding hole -  
Padding can be added with extra cost

**Length:** Short



● Gym-To-Street Active



BODYSUIT

## BSWA-S01

**Style Details:**

- Low back suits
- Round neck
- Thin straps
- Low to medium support
- Triangle gusset

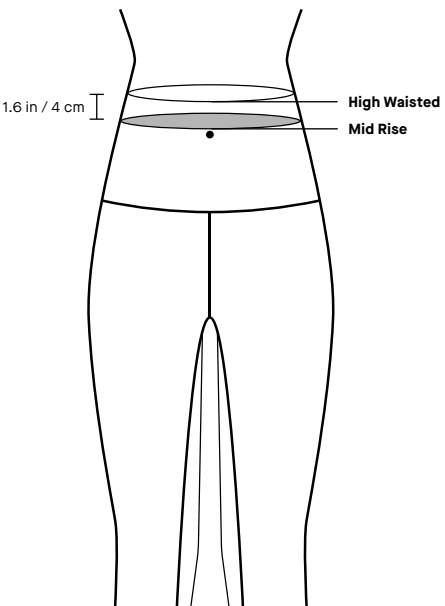
**Stitching:** Binding stitch

**Padding:** Removable padding hole -  
Padding can be added with extra cost

**Length:** Short

# Bottoms Rise Options

Our standard rise options is “Mid Rise”.  
Choose one of our 2 rise options for any active bottoms  
as part of ready design. Other rise options will be  
considered custom design.



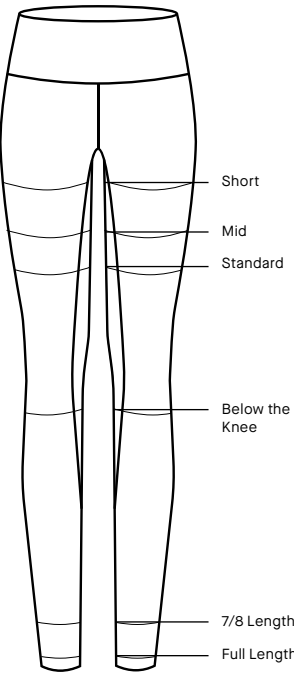
High Waisted



Mid Rise



# Bottoms Length



	XS		S		M		L		XL	
	inch	cm	inch	cm	inch	cm	inch	cm	inch	cm
Short	2.6	6.5	2.8	7	3.0	7.5	3.1	8	3.3	8.5
Mid	4.1	10.5	4.3	11	4.5	11.5	4.7	12	4.9	12.5
Standard	5.1	13	5.3	13.5	5.7	14.5	5.9	15	6.1	15.5
Below the Knee	13.4	34	13.8	35	14.2	36	14.6	37	15	38
7/8 Length	23.6	60	24	61	24.4	62	24.8	63	25.2	64
Full Length	27.5	70	28	71	28.3	72	28.7	73	29.1	74

\*Measured from middle of crotch seam until end of inner leg

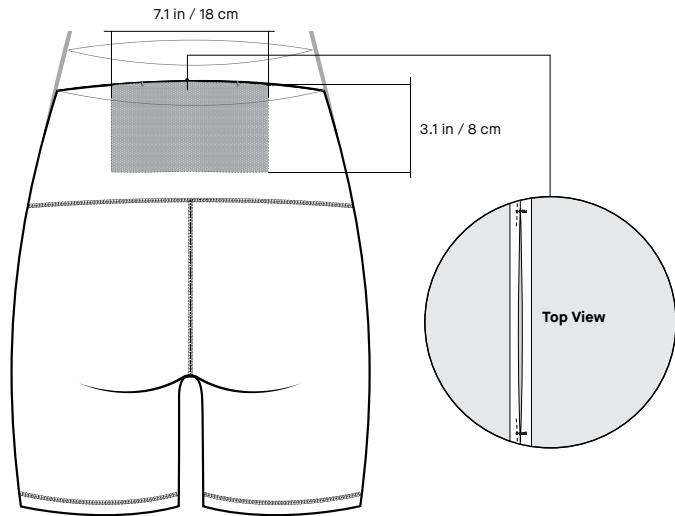
## Leggings Length Options

Our standard leggings is 7/8 Length.  
Choose one of our 2 legging length options:  
- 7/8 Length  
- Full Length



# Hidden Pocket Options

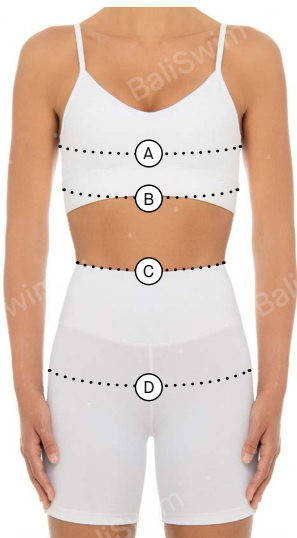
You may choose to add a hidden mesh pocket in the back of your bottom's waistband panel with \$2 of extra cost. The hidden pocket is discrete & big enough to fit your phone.



**Medium and High Rise Options**  
Bigger pocket can fit regular cellphones

# Standard Size Chart

WOMEN'S ACTIVE | 2024 VERSION



International Sizing	XS	S	M	L	XL
US	4	6	8	10	12
AU/UK	8	10	12	14	16
Cup	32	34	36	38	40
Bust (cm)	83	87	91	95	99
Underbust (cm)	68	72	76	80	84
Waist (cm)	65	69	73	77	81
Hip (cm)	91	95	99	103	107
Bust (in)	32.7	34.3	35.8	37.4	39
Underbust (in)	26.8	28.3	29.9	31.5	33.1
Waist (in)	25.6	27.2	28.7	30.3	31.9
Hip (in)	35.8	37.4	39	34.6	42.1

Use a measuring tape and hold the tape securely around for key points.

- (A) **Bust.** Measure over the fullest area of the bust & straight around the back.
- (B) **Underbust.** Measure directly under the bust & straight around the back.
- (C) **Waist.** The waist is below the abdomen between the rib cage and hips.
- (D) **Hip.** Measure the fullest part of the hip ensuring the tape is straight around the body.

# Women's Active Price List

Ready Design

Code	Carvico VITA Power (ECONYL®) ♻️	Carvico Aspen Heavy	Bali Swim Fit	Bali Swim Active Rib	Bali Swim Viscose
	Solid	Print	Print	Solid	Solid
BSWA-T33	-	-	-	-	\$14 <sup>95</sup>
BSWA-T32	-	-	-	-	\$15 <sup>95</sup>
BSWA-T31	-	-	-	-	\$16 <sup>95</sup>
BSWA-T30	-	-	-	-	\$15 <sup>95</sup>
BSWA-T29	-	-	-	-	\$19 <sup>95</sup>
BSWA-T28	\$20 <sup>95</sup>	\$23 <sup>95</sup>	\$19 <sup>95</sup>	-	-
BSWA-T27	\$19 <sup>95</sup>	\$21 <sup>95</sup>	\$19 <sup>95</sup>	\$18 <sup>95</sup>	-
BSWA-T26	\$20 <sup>95</sup>	\$22 <sup>95</sup>	\$19 <sup>95</sup>	\$19 <sup>95</sup>	-
BSWA-T25	\$19 <sup>95</sup>	\$22 <sup>95</sup>	\$19 <sup>95</sup>	\$18 <sup>95</sup>	-
BSWA-T24	\$19 <sup>95</sup>	\$22 <sup>95</sup>	\$19 <sup>95</sup>	\$18 <sup>95</sup>	-
BSWA-T23	\$18 <sup>95</sup>	\$21 <sup>95</sup>	\$18 <sup>95</sup>	\$18 <sup>95</sup>	-
BSWA-T22	\$25 <sup>95</sup>	\$28 <sup>95</sup>	\$23 <sup>95</sup>	\$23 <sup>95</sup>	-
BSWA-T21	\$19 <sup>95</sup>	\$22 <sup>95</sup>	\$19 <sup>95</sup>	\$18 <sup>95</sup>	-
BSWA-T20	\$21 <sup>95</sup>	\$25 <sup>95</sup>	\$20 <sup>95</sup>	\$20 <sup>95</sup>	-
BSWA-T19	\$19 <sup>95</sup>	\$22 <sup>95</sup>	\$19 <sup>95</sup>	\$18 <sup>95</sup>	-
BSWA-T18	\$18 <sup>95</sup>	\$21 <sup>95</sup>	\$18 <sup>95</sup>	\$18 <sup>95</sup>	-
BSWA-T17	\$25 <sup>95</sup>	\$28 <sup>95</sup>	\$23 <sup>95</sup>	\$22 <sup>95</sup>	-
BSWA-T16	\$19 <sup>95</sup>	\$22 <sup>95</sup>	\$19 <sup>95</sup>	\$18 <sup>95</sup>	-
BSWA-T15	\$20 <sup>95</sup>	\$23 <sup>95</sup>	\$19 <sup>95</sup>	\$19 <sup>95</sup>	-
BSWA-T14	\$21 <sup>95</sup>	\$25 <sup>95</sup>	\$20 <sup>95</sup>	\$20 <sup>95</sup>	-
BSWA-T13	\$22 <sup>95</sup>	\$25 <sup>95</sup>	\$20 <sup>95</sup>	\$21 <sup>95</sup>	-
BSWA-T12	\$18 <sup>95</sup>	\$21 <sup>95</sup>	\$18 <sup>95</sup>	\$18 <sup>95</sup>	-

\*T = Top, \*B = Bottom, \*S = Suit. Print prices for natural fabric are in Bali Swim prints only.

# Women's Active Price List

Ready Design

Code	Carvico VITA Power (ECONYL®) ♻️	Carvico Aspen Heavy	Bali Swim Fit	Bali Swim Active Rib	Bali Swim Viscose
	Solid	Print	Print	Solid	Solid
BSWA-T11	\$22 <sup>95</sup>	\$25 <sup>95</sup>	\$20 <sup>95</sup>	\$20 <sup>95</sup>	-
BSWA-T10	\$17 <sup>95</sup>	\$20 <sup>95</sup>	\$18 <sup>95</sup>	\$17 <sup>95</sup>	-
BSWA-T09	\$19 <sup>95</sup>	\$22 <sup>95</sup>	\$19 <sup>95</sup>	\$18 <sup>95</sup>	-
BSWA-T08	\$17 <sup>95</sup>	\$20 <sup>95</sup>	\$18 <sup>95</sup>	\$17 <sup>95</sup>	-
BSWA-T07	\$20 <sup>95</sup>	\$23 <sup>95</sup>	\$20 <sup>95</sup>	\$19 <sup>95</sup>	-
BSWA-T06	\$19 <sup>95</sup>	\$21 <sup>95</sup>	\$19 <sup>95</sup>	\$18 <sup>95</sup>	-
BSWA-T05	\$20 <sup>95</sup>	\$23 <sup>95</sup>	\$19 <sup>95</sup>	\$19 <sup>95</sup>	-
BSWA-T04	\$19 <sup>95</sup>	\$22 <sup>95</sup>	\$19 <sup>95</sup>	\$19 <sup>95</sup>	-
BSWA-T03	\$20 <sup>95</sup>	\$22 <sup>95</sup>	\$19 <sup>95</sup>	\$19 <sup>95</sup>	-
BSWA-T02	\$19 <sup>95</sup>	\$22 <sup>95</sup>	\$19 <sup>95</sup>	\$18 <sup>95</sup>	-
BSWA-T01	\$20 <sup>95</sup>	\$23 <sup>95</sup>	\$19 <sup>95</sup>	\$19 <sup>95</sup>	-
BSWA-B33	-	-	-	-	\$18 <sup>95</sup>
BSWA-B32	-	-	-	-	\$19 <sup>95</sup>
BSWA-B31	-	-	-	-	\$18 <sup>95</sup>
BSWA-B30	-	-	-	-	\$14 <sup>95</sup>
BSWA-B29	-	-	-	-	\$21 <sup>95</sup>
BSWA-B28	\$26 <sup>95</sup>	\$29 <sup>95</sup>	\$23 <sup>95</sup>	-	-
BSWA-B27	\$25 <sup>95</sup>	\$29 <sup>95</sup>	\$23 <sup>95</sup>	\$16 <sup>95</sup>	-
BSWA-B26	\$19 <sup>95</sup>	\$22 <sup>95</sup>	\$18 <sup>95</sup>	\$14 <sup>95</sup>	-
BSWA-B25	\$27 <sup>95</sup>	\$31 <sup>95</sup>	\$24 <sup>95</sup>	\$17 <sup>95</sup>	-
BSWA-B24	\$21 <sup>95</sup>	\$24 <sup>95</sup>	\$20 <sup>95</sup>	\$15 <sup>95</sup>	-
BSWA-B23	\$20 <sup>95</sup>	\$22 <sup>95</sup>	\$19 <sup>95</sup>	\$14 <sup>95</sup>	-

\*T = Top, \*B = Bottom, \*S = Suit. Print prices for natural fabric are in Bali Swim prints only.



# Women's Active Price List Ready Design

Code	Carvico VITA Power (ECONYL®) ♻️	Carvico Aspen Heavy	Bali Swim Fit	Bali Swim Active Rib	Bali Swim Viscose
	Solid	Print	Print	Solid	Solid
BSWA-B22	\$25 <sup>95</sup>	\$28 <sup>95</sup>	\$22 <sup>95</sup>	\$16 <sup>95</sup>	-
BSWA-B21	\$29 <sup>95</sup>	\$33 <sup>95</sup>	\$25 <sup>95</sup>	\$17 <sup>95</sup>	-
BSWA-B20	\$21 <sup>95</sup>	\$24 <sup>95</sup>	\$20 <sup>95</sup>	-	-
BSWA-B19	\$25 <sup>95</sup>	\$28 <sup>95</sup>	\$22 <sup>95</sup>	\$16 <sup>95</sup>	-
BSWA-B18	\$25 <sup>95</sup>	\$28 <sup>95</sup>	\$22 <sup>95</sup>	\$16 <sup>95</sup>	-
BSWA-B17	\$19 <sup>95</sup>	\$22 <sup>95</sup>	\$18 <sup>95</sup>	-	-
BSWA-B16	\$20 <sup>95</sup>	\$23 <sup>95</sup>	\$19 <sup>95</sup>	\$15 <sup>95</sup>	-
BSWA-B15	\$25 <sup>95</sup>	\$28 <sup>95</sup>	\$23 <sup>95</sup>	\$16 <sup>95</sup>	-
BSWA-B14	\$21 <sup>95</sup>	\$24 <sup>95</sup>	\$20 <sup>95</sup>	\$15 <sup>95</sup>	-
BSWA-B13	\$25 <sup>95</sup>	\$28 <sup>95</sup>	\$22 <sup>95</sup>	\$16 <sup>95</sup>	-
BSWA-B12	\$20 <sup>95</sup>	\$23 <sup>95</sup>	\$19 <sup>95</sup>	\$15 <sup>95</sup>	-
BSWA-B11	\$25 <sup>95</sup>	\$29 <sup>95</sup>	\$23 <sup>95</sup>	-	-
BSWA-B10	\$19 <sup>95</sup>	\$22 <sup>95</sup>	\$19 <sup>95</sup>	\$15 <sup>95</sup>	-
BSWA-B09	\$24 <sup>95</sup>	\$27 <sup>95</sup>	\$22 <sup>95</sup>	\$17 <sup>95</sup>	-
BSWA-B08	\$21 <sup>95</sup>	\$24 <sup>95</sup>	\$20 <sup>95</sup>	\$14 <sup>95</sup>	-
BSWA-B07	\$19 <sup>95</sup>	\$22 <sup>95</sup>	\$18 <sup>95</sup>	\$14 <sup>95</sup>	-
BSWA-B06	\$24 <sup>95</sup>	\$27 <sup>95</sup>	\$22 <sup>95</sup>	\$16 <sup>95</sup>	-
BSWA-B05	\$19 <sup>95</sup>	\$22 <sup>95</sup>	\$19 <sup>95</sup>	\$14 <sup>95</sup>	-
BSWA-B04	\$20 <sup>95</sup>	\$23 <sup>95</sup>	\$19 <sup>95</sup>	\$15 <sup>95</sup>	-
BSWA-B03	\$24 <sup>95</sup>	\$27 <sup>95</sup>	\$22 <sup>95</sup>	\$16 <sup>95</sup>	-
BSWA-B02	\$26 <sup>95</sup>	\$30 <sup>95</sup>	\$23 <sup>95</sup>	\$17 <sup>95</sup>	-
BSWA-B01	\$24 <sup>95</sup>	\$28 <sup>95</sup>	\$22 <sup>95</sup>	\$16 <sup>95</sup>	-

\*T = Top, \*B = Bottom, \*S = Suit. Print prices for natural fabric are in Bali Swim prints only.

Women’s Active Price List Ready Design

Code	Carvico VITA Power (ECONYL®) ♻️	Carvico Aspen Heavy	Bali Swim Fit	Bali Swim Active Rib	Bali Swim Viscose
	Solid	Print	Print	Solid	Solid
BSWA-S03	-	-	-	-	\$18 <sup>95</sup>
BSWA-S02	\$25 <sup>95</sup>	\$28 <sup>95</sup>	\$23 <sup>95</sup>	\$17 <sup>95</sup>	-
BSWA-S01	\$24 <sup>95</sup>	\$27 <sup>95</sup>	\$23 <sup>95</sup>	\$17 <sup>95</sup>	-

\*T = Top, \*B = Bottom, \*S = Suit. Print prices for natural fabric are in Bali Swim prints only.







## Women's Lounge

---

With our line of Women's Loungewear, athleisure can be a sustainable trend with a wide range of cool, casual and comfortable clothing for everyday use. We ensure that ready design series of Women's Loungewear has a multipurpose aesthetic, giving your customers a wider option for sport, social and leisure activities all with one set of loungewear. Our designers have also improved the typical Loungewear with an exciting twist that is both flirty and feminine. Easily create a private label loungewear that can be mixed and matched, with our custom design prints and colors. Opt for neutral colors, like misty grey and dusty khaki green or bright one like baby pink. Your customers will absolutely fall in love with the snug BS Baby Terry fabric that has made our women's loungewear successful in the market.

# Tops





● Yoga Athleisure



TOP

**BSWL-T13**

**Fabric:** BS Viscose (On Photo)

**Stitching:** Cover stitch, Basic hem stitch,  
Binding stitch

**Hardware:** -

**Style Details:**

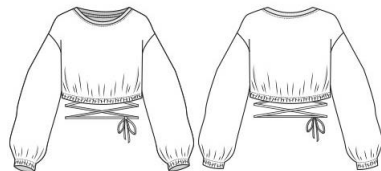
- Dolman sleeve kimono
- Wrap opening
- Gathered back

**Sleeve Length:** Long

**Length:** Hips (On photo)



● Luxe Lounge



TOP

**BSWL-T12**

**Fabric:** BS Organic French Terry (On Photo)

**Stitching:** Basic hem stitch

**Hardware:** -

**Detail Feature:** Drawstring hem, Elasticated sleeve hem

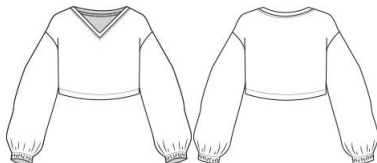
**Sleeve Length:** Long

**Length:** Waist





● Luxe Lounge



TOP

**BSWL-T11**

**Fabric:** BS Organic French Terry (On Photo)

**Stitching:** Basic hem stitch

**Hardware:** -

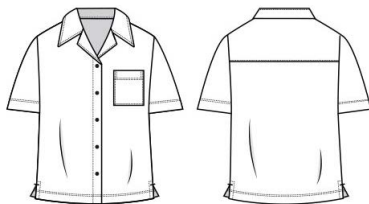
**Detail Feature:** V-Neck, Elasticated sleeve hem

**Sleeve Length:** Long

**Length:** Waist



● Luxe Lounge



TOP

**BSWL-T10**

**Fabric:** BS Baby Terry (On Photo)

**Stitching:** Basic hem stitch

**Hardware:** Snap buttons

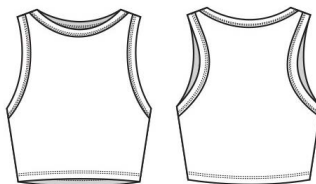
**Detail Feature:** Shirt collar, Back yoke

**Sleeve Length:** Short

**Length:** Under-Waist



● Luxe Lounge



TOP

**BSWL-T09**

**Fabric:** BS Ecovero (On Photo)

**Stitching:** Double stitch binding -  
Basic hem stitch

**Hardware:** -

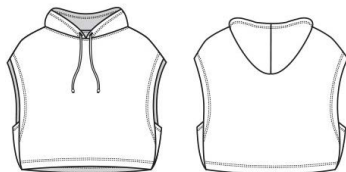
**Detail Feature:** Binded neck & Armholes

**Sleeve Length:** -

**Length:** Cropped



● Luxe Lounge



TOP

**BSWL-T08**

**Fabric:** BS Organic French Terry (On Photo)

**Stitching:** Basic hem stitch

**Hardware:** -

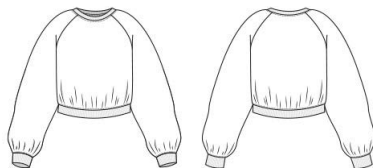
**Detail Feature:** Hoodie, Triangle side panel

**Sleeve Length:** Sleeveless

**Length:** Waist



● Luxe Lounge



TOP

**BSWL-T07**

**Fabric:** BS Organic French Terry (On Photo)

**Stitching:** Basic hem stitch

**Hardware:** -

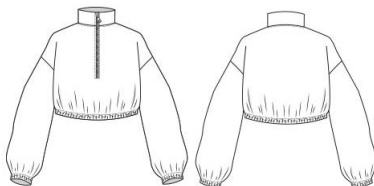
**Detail Feature:** Raglan sleeve, Ribbed neck, Sleeves & Hem

**Sleeve Length:** Long

**Length:** Under-Waist



● Luxe Lounge



TOP

**BSWL-T06**

**Fabric:** BS Organic French Terry (On Photo)

**Stitching:** Basic hem stitch

**Hardware:** Zipper

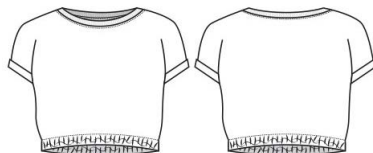
**Detail Feature:** Turtleneck with zipper,  
Elasticated sleeve hem

**Sleeve Length:** Long

**Length:** Waist



● Luxe Lounge



TOP

**BSWL-T05**

**Fabric:** BS Organic French Terry (On Photo)

**Stitching:** Basic hem stitch

**Hardware:** -

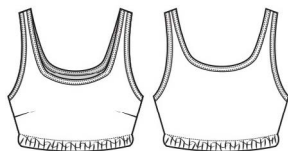
**Detail Feature:** Elasticated hem band,  
Folded sleeve hem

**Sleeve Length:** Short

**Length:** Waist



● Luxe Lounge



TOP

**BSWL-T04**

**Fabric:** BS Baby Terry (On Photo)

**Stitching:** Double stitch binding

**Hardware:** -

**Detail Feature:** Elasticated underbust,  
Bound neckline & Armholes

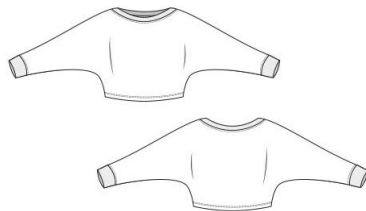
**Sleeve Length:** -

**Length:** Underbust





● Luxe Lounge



TOP

**BSWL-T03**

**Fabric:** BS Organic French Terry (On Photo)

**Stitching:** Basic hem stitch

**Hardware:** -

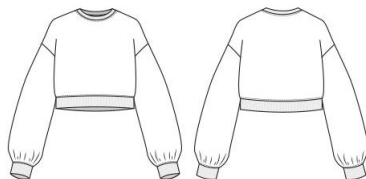
**Detail Feature:** Boat neckline, Ribbed neck & Sleeves

**Sleeve Length:** Long

**Length:** Waist



● Luxe Lounge



TOP

**BSWL-T02**

**Fabric:** BS Baby Terry (On Photo)

**Stitching:** Basic hem stitch

**Hardware:** -

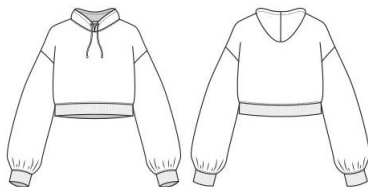
**Detail Feature:** Ribbed neckline, Sleeves  
& Hem

**Sleeve Length:** Long

**Length:** Waist



● Luxe Lounge



TOP

**BSWL-T01**

**Fabric:** BS Organic French Terry (On Photo)

**Stitching:** Basic hem stitch

**Hardware:** -

**Detail Feature:** Hoodie, Ribbed sleeves  
& Hem

**Sleeve Length:** Long

**Length:** Waist

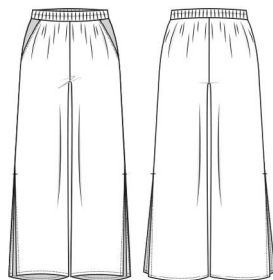


# Bottoms





● Luxe Lounge



BOTTOM

**BSWL-B12**

**Fabric:** BS Organic French Terry (On Photo)

**Stitching:** Basic hem stitch

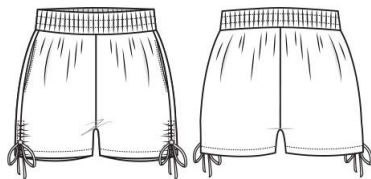
**Hardware:** -

**Detail Feature:** Side slant pockets, Side slits

**Length:** Long



● Luxe Lounge



BOTTOM

**BSWL-B11**

**Fabric:** BS Organic French Terry (On Photo)

**Stitching:** Basic hem stitch

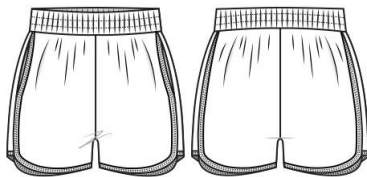
**Hardware:** -

**Detail Feature:** Side drawstrings, Side pockets

**Length:** Short



● Luxe Lounge



BOTTOM

**BSWL-B10**

**Fabric:** BS Organic French Terry (On Photo)

**Stitching:** Basic hem stitch

**Hardware:** -

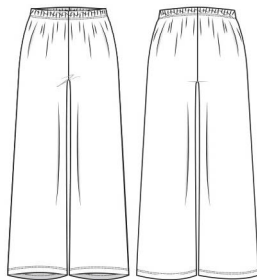
**Detail Feature:** Side slant pockets, Side slit

**Length:** Long





● Luxe Lounge



BOTTOM

**BSWL-B09**

**Fabric:** BS Ecovero (On Photo)

**Stitching:** Basic hem stitch

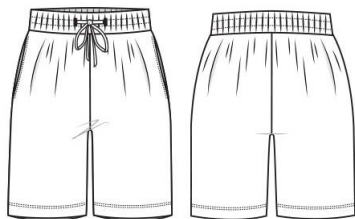
**Hardware:** -

**Detail Feature:** Elasticated waistband

**Length:** Long



● Luxe Lounge



BOTTOM

**BSWL-B08**

**Fabric:** BS Organic French Terry (On Photo)

**Stitching:** Basic hem stitch

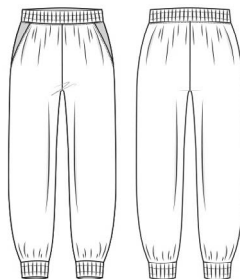
**Hardware:** -

**Detail Feature:** Side pocket

**Length:** Short



● Luxe Lounge



BOTTOM

**BSWL-B07**

**Fabric:** BS Baby Terry (On Photo)

**Stitching:** Basic hem stitch

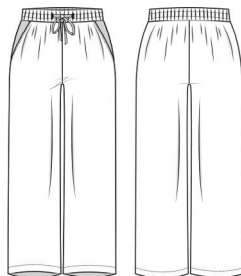
**Hardware:** -

**Detail Feature:** Side slant pockets,  
Elasticated waistband & Hems

**Length:** Long



● Luxe Lounge



BOTTOM

**BSWL-B06**

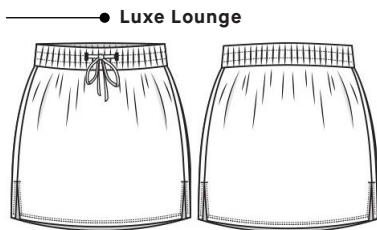
**Fabric:** BS Organic French Terry (On Photo)

**Stitching:** Basic hem stitch

**Hardware:** -

**Detail Feature:** Side slant pockets

**Length:** Long



BOTTOM

**BSWL-B05**

**Fabric:** BS Organic French Terry (On Photo)

**Stitching:** Basic hem stitch

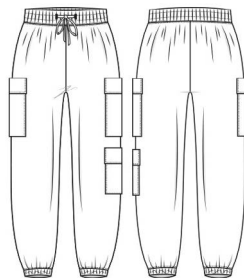
**Hardware:** -

**Detail Feature:** Side slits

**Length:** Short



● Luxe Lounge



BOTTOM

**BSWL-B04**

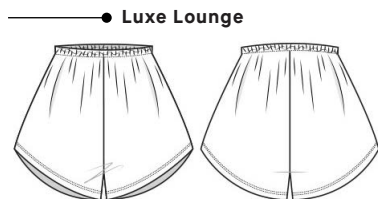
**Fabric:** BS Organic French Terry (On Photo)

**Stitching:** Basic hem stitch

**Hardware:** -

**Detail Feature:** Cargo pockets, Elasticated hems

**Length:** Long



BOTTOM

### BSWL-B03

**Fabric:** BS Organic French Terry (On Photo)

**Stitching:** Basic hem stitch

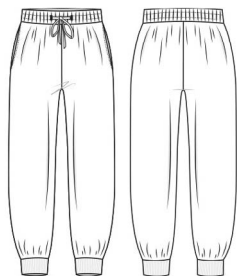
**Hardware:** -

**Detail Feature:** Scalloped hems

**Length:** Short



● Luxe Lounge



BOTTOM

**BSWL-B02**

**Fabric:** BS Baby Terry (On Photo)

**Stitching:** Basic hem stitch

**Hardware:** -

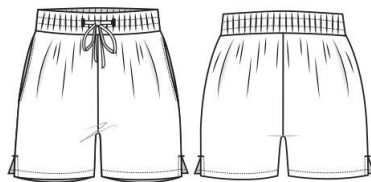
**Detail Feature:** Side slit, Side pocket, Ribbed hems

**Length:** Long





● Luxe Lounge



BOTTOM

**BSWL-B01**

**Fabric:** BS Baby Terry (On Photo)

**Stitching:** Basic hem stitch

**Hardware:** -

**Detail Feature:** Side slit, Side pockets

**Length:** Short



# Dresses





● Luxe Lounge



DRESS

**BSWL-D04**

**Fabric:** BS Organic French Terry (On Photo)

**Stitching:** Basic hem stitch

**Hardware:** -

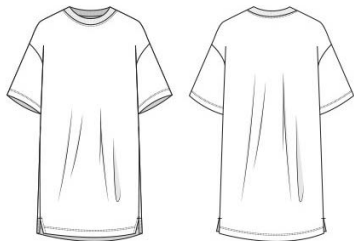
**Detail Feature:** Side hidden pockets & Slits,  
Ribbed neckline

**Sleeve Length:** Elbow-Length

**Length:** Below the knee



● Luxe Lounge



DRESS

**BSWL-D03**

**Fabric:** BS Organic French Terry (On Photo)

**Stitching:** Basic hem stitch

**Hardware:** -

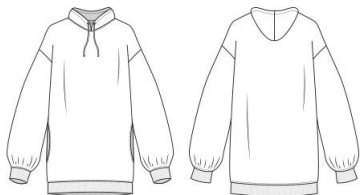
**Detail Feature:** Side slits, Ribbed neckline

**Sleeve Length:** Elbow-Length

**Length:** Short



● Luxe Lounge



DRESS

**BSWL-D02**

**Fabric:** BS Organic French Terry (On Photo)

**Stitching:** Basic hem stitch

**Hardware:** -

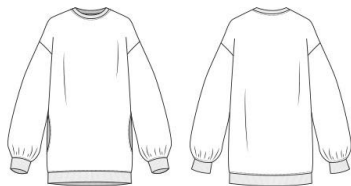
**Detail Feature:** Side hidden pockets,  
Ribbed hems

**Sleeve Length:** Long

**Length:** Short



● Luxe Lounge



DRESS

**BSWL-D01**

**Fabric:** BS Organic French Terry (On Photo)

**Stitching:** Basic hem stitch

**Hardware:** -

**Detail Feature:** Side hidden pockets,  
Ribbed hems

**Sleeve Length:** Long

**Length:** Short





## Standard Size Chart WOMEN'S LOUNGE | 2024 VERSION



International Sizing	XS	S	M	L	XL
US	4	6	8	10	12
AU/UK Old	8	10	12	14	16
AU/UK New	6	8	10	12	14
<b>Bust (cm)</b>	83	87	91	95	99
<b>Waist (cm)</b>	65	69	73	77	81
<b>Lower Hip (cm)</b>	91	95	99	103	107
<b>Inside Leg Length (cm)</b>	72.5	73.5	74.5	76.5	76.5
<b>Bust (in)</b>	32.7	34.3	35.8	37.4	39
<b>Waist (in)</b>	25.6	27.2	28.7	30.3	31.9
<b>Lower Hip (in)</b>	35.8	37.4	39	40.6	42.1
<b>Inside Leg Length (in)</b>	28.5	28.9	29.3	29.7	30.1

Use a measuring tape and hold the tape securely around for key points.

- Ⓐ **Bust.** Measure over the fullest area of the bust & straight around the back.
- Ⓑ **Waist.** Measure waist under the rib cage and above the hip.
- Ⓒ **Lower Hip.** Measure the fullest part of the hip ensuring the tape is straight around the body.
- Ⓓ **Inside Leg Length.** Measure the inner thighs from below the crotch straight to the floor level.

# Women's Lounge Price List

Ready Design

Code	Bali Swim Baby Terry	Bali Swim Terry Towel	Bali Swim Organic French Terry	Bali Swim Ecovero RIB	Bali Swim Viscose
	Solid	Solid	Solid	Solid	Solid
BSWL-T13	-	-	-	-	\$22 <sup>95</sup>
BSWL-T12	\$18 <sup>95</sup>	\$19 <sup>95</sup>	\$20 <sup>95</sup>	-	-
BSWL-T11	\$17 <sup>95</sup>	\$19 <sup>95</sup>	\$20 <sup>95</sup>	\$20 <sup>95</sup>	-
BSWL-T10	\$17 <sup>95</sup>	\$19 <sup>95</sup>	-	-	-
BSWL-T09	-	-	-	\$15 <sup>95</sup>	-
BSWL-T08	\$17 <sup>95</sup>	\$19 <sup>95</sup>	\$20 <sup>95</sup>	-	-
BSWL-T07	\$18 <sup>95</sup>	\$20 <sup>95</sup>	\$21 <sup>95</sup>	-	-
BSWL-T06	\$19 <sup>95</sup>	\$21 <sup>95</sup>	\$22 <sup>95</sup>	-	-
BSWL-T05	\$16 <sup>95</sup>	\$17 <sup>95</sup>	\$18 <sup>95</sup>	-	-
BSWL-T04	\$15 <sup>95</sup>	\$15 <sup>95</sup>	-	\$15 <sup>95</sup>	-
BSWL-T03	\$19 <sup>95</sup>	\$20 <sup>95</sup>	\$22 <sup>95</sup>	-	-
BSWL-T02	\$17 <sup>95</sup>	\$18 <sup>95</sup>	\$19 <sup>95</sup>	-	-
BSWL-T01	\$18 <sup>95</sup>	\$20 <sup>95</sup>	\$21 <sup>95</sup>	-	-
BSWL-B12	\$20 <sup>95</sup>	\$22 <sup>95</sup>	\$24 <sup>95</sup>	-	-
BSWL-B11	\$17 <sup>95</sup>	\$18 <sup>95</sup>	\$19 <sup>95</sup>	-	-
BSWL-B10	\$16 <sup>95</sup>	\$17 <sup>95</sup>	-	-	-
BSWL-B09	-	-	-	\$22 <sup>95</sup>	-
BSWL-B08	\$17 <sup>95</sup>	\$18 <sup>95</sup>	\$19 <sup>95</sup>	-	-
BSWL-B07	\$19 <sup>95</sup>	\$21 <sup>95</sup>	\$23 <sup>95</sup>	-	-
BSWL-B06	\$20 <sup>95</sup>	\$23 <sup>95</sup>	\$25 <sup>95</sup>	-	-
BSWL-B05	\$16 <sup>95</sup>	\$17 <sup>95</sup>	\$18 <sup>95</sup>	-	-
BSWL-B04	\$20 <sup>95</sup>	\$22 <sup>95</sup>	\$25 <sup>95</sup>	-	-

\*T = Top, \*B = Bottom, \*D = Dress.

# Women's Lounge Price List

Ready Design

Code	Bali Swim Baby Terry	Bali Swim Terry Towel	Bali Swim Organic French Terry	Bali Swim Ecovero RIB	Bali Swim Viscose
	Solid	Solid	Solid	Solid	Solid
BSWL-B03	\$15 <sup>95</sup>	\$16 <sup>95</sup>	\$16 <sup>95</sup>	\$16 <sup>95</sup>	-
BSWL-B02	\$19 <sup>95</sup>	\$20 <sup>95</sup>	\$22 <sup>95</sup>	-	-
BSWL-B01	\$16 <sup>95</sup>	\$17 <sup>95</sup>	\$18 <sup>95</sup>	-	-
BSWL-D04	\$22 <sup>95</sup>	\$24 <sup>95</sup>	\$26 <sup>95</sup>	-	-
BSWL-D03	\$21 <sup>95</sup>	\$22 <sup>95</sup>	\$24 <sup>95</sup>	\$23 <sup>95</sup>	-
BSWL-D02	\$23 <sup>95</sup>	\$26 <sup>95</sup>	\$28 <sup>95</sup>	-	-
BSWL-D01	\$22 <sup>95</sup>	\$25 <sup>95</sup>	\$26 <sup>95</sup>	-	-

\*T = Top, \*B = Bottom, \*D = Dress.







## Starter Kits

We've helped hundreds of swim and apparel labels successfully launch their brands from scratch. Our Starter Kits are a compilation of useful tools for you to kick start your journey.

[View Starter Kits](#)



## Fabrics

---

We offer a wide range of fabrics and constantly add new fabrics in tune with current trends for you to choose from. All our fabrics are tested by us and all have the quality to make a high-end product.

**See latest fabric range and colors [here](#)**

# Prints

**Endless print options.  
Always using Eco Ink.**

We do all our prints in house.  
All of our prints are made using ecological inks ([ECO PASSPORT certified by OEKO-TEX®](#)).

## Print Strikes

For all prints, we offer a mock-up & print-strike service, where we send you a digital mockup for proportion (size) approval, and then we make a 30×30cm trial-print swatch to send you. From there, you can personally verify the quality of the print itself, and if there's something you aren't satisfied with, we'll revise it!

For fabric prints, the digital print file (artwork) must be high-resolution (300dpi+) to print well. It can be a vector, JPG, PNG, TIFF, or any other format - as long as the file is high-res.

## Seamless

Artwork should be seamless or set up for repeat, which simply means that you can put copies of the print next to it in each direction so that it matches up without any interruption in the pattern. If it's not repeatable initially, you can sometimes mirror the image four ways, and thus create the same effect. We can assist you in ensuring that your print is able to be repeated and replicated in a clear pattern.

## Scale

Lastly, the scale of your print is key. For example, you have an artwork/pattern of a starfish - what's the height of each starfish? The difference between a small cute 3cm starfish and large 15cm starfish will make a difference on your end-result.

## Print Options

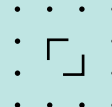
\*includes worldwide license



Your own print



Our Pinterest [selection](#)\*



[Shutterstock](#)\*



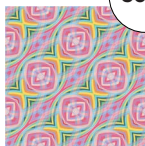
# Seamless Prints



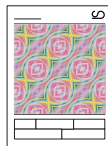
Artwork to be repeated and scaled



Scale A



Scale B



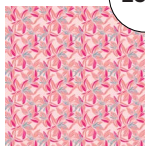
30 x 30 cm  
Strike Off



Send to customer  
for approval



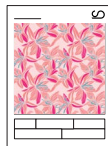
Artwork to be repeated and scaled



Scale A



Scale B



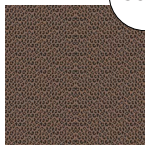
30 x 30 cm  
Strike Off



Send to customer  
for approval



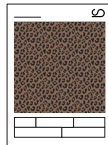
Artwork to be repeated and scaled



Scale A



Scale B



30 x 30 cm  
Strike Off



Send to customer  
for approval





# Packaging

---

Put the finishing touch on your products with our wide range of labelling options: hang tags, labels, hygiene liners and bags.

Helpful tip: Develop your labelling during the sampling stage/early - so that it doesn't hold you up later.

**View our latest packing options [here](#)**







## Shipping

We usually send all products with DHL or similar level courier. From our experience it's the most reliable way to send products: both samples and bulk production to ensure safe and quick delivery to our customers.

We want to see your products arrive whole, and in time.

### Sample Shipment

#### Lead Time

4-5 business days worldwide.

#### Cost

US\$50-150 per shipment depending how many samples in the box and where you are located.

### Bulk Shipment

#### Lead Time

4-5 business days worldwide + custom clearing (1-3 days usually).

#### Cost per 80-150 pcs (depending on style)

Australia: ~US\$150

USA: ~US\$190

Europe: ~US\$220

These numbers are based on our last months shipments to a variety of destinations and sizes. Exact prices will be settled when we ship.



# Frequently Asked Questions

---

## **I'm new to Active wear and Lounge wear and want to run my own business. Do you have any tips?**

Grab our [Starter Kit](#)! With that in hand, you'll have everything you need to get going.

## **Is your production ethical? Sustainable?**

At the heart of Bali Swim is our constant endeavor to improve the lives of people and the state of our planet. Read more [here](#).

## **What is your MOQ for samples?**

We don't require a MOQ – our goal is to make your ordering process easy and convenient. Get your ready design samples (and bulk) on [shop.baliswim.com](https://shop.baliswim.com) now!

## **What is your MOQ for manual bulk re-orders?**

200pcs – if you re-order the same styles within 6 months, you won't be subjected to a surcharge.

## **What are your payment terms for manual orders?**

50% deposit and 50% before delivery. You can submit your payments with PayPal (links to CC also) or through a bank transfer.

For new clients, we require a 100% deposit up front for your first order. This only applies once to your first order with us. With PayPal, you have Buyer Protection.

---

### **How long does it take to produce an order (lead times)?**

Orders on [shop.baliswim.com](https://shop.baliswim.com):

- Samples: 3 days (in stock fabrics)
- Bulk: 6 weeks (in stock fabrics)

Samples: 1-3 weeks\* (Ready Design)

Samples: 4-8 weeks\* (Custom Design)

Bulk production 6-8 weeks\*

Shipping: 4-5 business days worldwide (DHL)

Full cycle (start to finish)

- 1-3 months\* (Ready Design)
- 3-6 months\* (Custom Design)

When using imported fabrics, you should add 3-4 weeks onto the timeline to allow shipping time depending on the type of fabric.

\*Current conditions apply to all lead times including fabric availability, current load, holidays and other variables. Lead times will be confirmed by sales to you directly at order times.

### **What other collections do you make?**

We have expanded our range of collection through the years. See our catalog at [baliswim.com](https://baliswim.com)

### **What kind of products or design elements do you not yet work with?**

As we grow as a company, we have built a network of reliable and trustworthy suppliers. We also have a sourcing service where we can find the right product for you. See our service [here](#).

### **How are my designs kept safe?**

In our Terms & Conditions, we have a segment about Confidentiality (NDA), which protects your Intellectual Property (IP), such as information about you, your business, and your designs. You can read our full T&C [here](#) to understand just how we keep your designs safe.

### **Is bulk production a must if I sample with you?**

No! When you order with us, there is absolutely no obligation to complete a bulk order after producing a sample. You also own your patterns that we develop for you.

### **What file format for CAD do you work with?**

DXF and DGS.

---

### **What are your Terms & Conditions?**

Please read our T&C by clicking [here](#).

### **How does it work when I order full rolls of imported Italian fabrics?**

If you want to order colors of Carvico or JL that is not in our stock, we have to order full rolls. We make the purchase for you, but you are responsible for covering the full and complete cost of these materials before your purchase. When you use the fabric later on in production, we deduct the value of the fabric used against the production. You can see it as a pre-paid credit.

However, if you choose to save some fabric or not use it all, that means you have fabric that is left in our warehouse, which we will keep for future orders. When you use that fabric later on for a future order, we will credit the value for that next order.

Example: You've placed a total order of \$10,000 and in this bulk production, we are using your saved fabric rolls at value of \$3000 – then that amount will be deducted from your next order so you'll have a value of \$7000 remaining.

### **Do you sell fabrics only?**

Yes. We sell fabrics with minimum order of 1 meter. Order [here](#).

### **Who are your clients?**

Aligned with our T&Cs, we do not disclose names, designs, or any information regarding our clients. But on our [homepage](#) and our [Google Maps](#), we have a few reviews from our clients who chose to share their experience working with us. We value privacy and integrity.

We manufacture for labels worldwide, a majority of which are in North America, Australia, and Europe.

We've helped a number of our clients launch their new swimwear lines and they've grown with us over the years. We've also worked with established brands who were seeking a new manufacturing partner.

### **Can we visit you in Bali?**

Of course! Our 2000 sqm superfactory hosts all of our operation for you to visit and see. We have private showrooms where you can meet your rep or merchandiser in comfort for an in-depth design and manufacturing discussion and do fitting of your samples. We are located in west Denpasar on a major road for easy and quick access from any location in Bali. To visit our factory please make an appointment first, [here](#).





**We donate 10 cents  
per active and lounge set**

**to clean up  
our oceans**

Read more about our ethical and sustainable methods [here](#).





**baliswim.com**  
info@baliswim.com  
[+62 813-3888-8585](tel:+6281338888585)

**BaliSwim**

