

A photograph of two women in a modern, minimalist setting. One woman, with blonde hair, is standing and looking back over her shoulder, wearing a white, long-sleeved, open robe. The other woman, with dark hair, is sitting on a white staircase, wearing a black, sleeveless, deep V-neck dress. The background features white concrete steps and a wooden cabinet with decorative vases. The overall mood is relaxed and elegant.

# Resort Catalog

2024 Edition

**BaliSwim**

Your Resort Line. Easy.  
[baliswim.com](https://baliswim.com)

We get you started, forecast trends, source, develop, produce and make manufacturing so much easier:

**Starter Kits**

**How-to Guides**

**Fabrics & Prints**

**Hardware Eco-options**

**Pattern Making**

**Ready Design**

**Online Bulk & Sample Shop**

**Fits & Re-fits**

**Grading**

**Bulk Production**

**Quality Control**

**Packaging & Shipping**

## We cover it all

---

At Bali Swim we are dedicated to helping entrepreneurs succeed and strive to provide you with the tools, resources, strategies, and guidance that you need to create quality brands - just like our Starter Kits and this catalog!

We are here to modernize the manufacturing industry - and offer low minimum orders, an innovative online shop for sample and bulk orders, on-trend and customizable ready designs, eco options for almost everything that we offer, and a transparent and open factory door policy.

Every order with us supports grassroots organizations that advance women's education and the environment; and we have implemented business development and hiring practices that raise the standards for women, health and income in our industry.

We also work hard to bridge any gap and offer weekly Instagram Live Q&As, easy to schedule video calls, and staff that are ready to guide you through all of our steps.

**At Bali Swim, we work to make entrepreneurship accessible, dependable, and fulfilling for you and our worldwide community.**



## Shop Resort and Kaftans

---

**Easiest & quickest way to create  
your luxe brand.**

Millions of ready design options with your custom brand label.

**[SHOP.BALISWIM.COM](https://shop.baliswim.com)**





# Step-by-step

Preparation

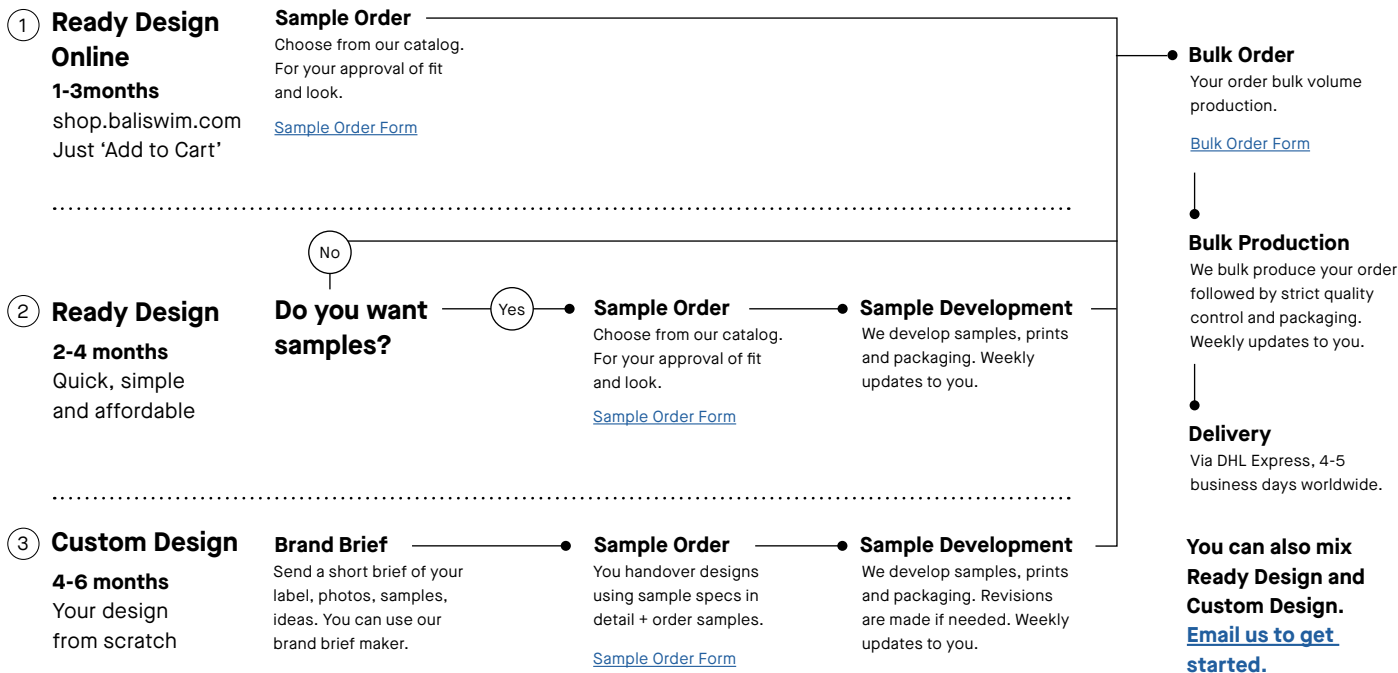
Sampling Stage

1-3 Months

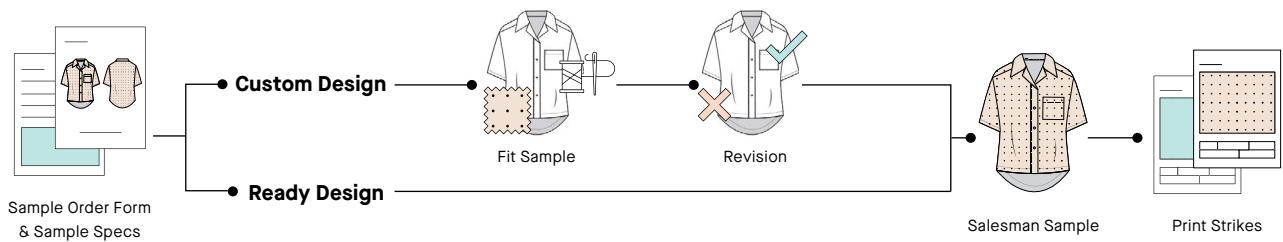
Production Stage

2-3 Months

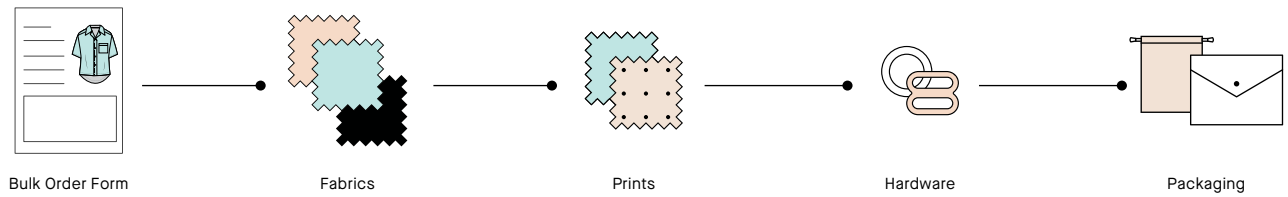
Delivery



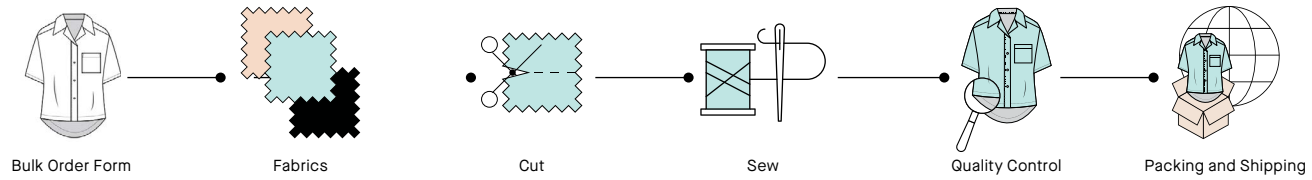
# Sampling



# Bulk Preparation



# Bulk Production





## Ready Design

Buy samples and bulk on  
[shop.baliswim.com](https://shop.baliswim.com) now!

Ready Design is our ready-to-go collection of resort wear designs! Choose the pieces you like and adorn with your very own branding – and they're ready to sell! Each year, we conduct extensive research on what's women's apparel is in, what's out, and what is the upcoming trends are for the season ahead. From there, we create a collection of styles that include those on-trend styles and re-worked classics.

You can mix and match tops and bottoms between any styles. You could even combine them with your custom designs to flesh out your resort line. The Ready Design styles are available in selected fabrics in upcoming color trends and prints. There are no development costs (pattern making & grading) with ready design. You only pay per piece. This method offers you the quickest, simplest, and most affordable method to manufacture your own resort wear label.

---

## Custom Design

Custom Design is where your ideas shine! For us to develop your dream resort wear or women's apparel we want to understand your ideas clearly. Ideally this means complete tech specs + patterns or samples of what you want to develop. But since we also work with non-designers we are definitely flexible. We have example templates (which we call sample specs) with clear instructions of how to start and what we need from you. This could include pictures of products you like with notes on any adjustments. We'll happily guide you.

**Extra Notes** Feel free to take design inspiration from our Ready Design range – taking parts from one design and adding to another or combining them with your own ideas.

Women’s Resort / Average Bulk Prices

CUSTOM DESIGN | +/- 50% | US\$

	Solid	Color	Print
Top	\$19 <sup>95</sup>	\$21 <sup>24</sup>	\$23 <sup>66</sup>
Bottom	\$23 <sup>95</sup>	\$23 <sup>95</sup>	\$30 <sup>95</sup>
Dress	\$26 <sup>95</sup>	\$27 <sup>95</sup>	\$34 <sup>95</sup>
Kimono	\$28 <sup>95</sup>	\$29	\$46 <sup>95</sup>
Kaftan	\$20 <sup>95</sup>	-	\$32 <sup>95</sup>
Cover Ups	\$19 <sup>95</sup>	-	\$23 <sup>95</sup>



	Service	Price, US\$	Comments
Product Development	Custom Design Development Fee	\$69/design (100% credited to bulk)	We offer this service for you to develop your own custom designs from scratch, including pattern making and size range grading. This fee will be fully credited from your bulk order for each the designs you develop. Any revision to your custom design is not included in this fee.
	Custom Design Sample Fee	3X Bulk Price	Make samples to develop your own design. The fee includes one sample we send to you, and one copy we keep with us, so you don't have to return your sample, saving you time and costs in development.
	Custom Design Additional Revision Fee	\$39/revision	If any revision is needed after the first development. Charged per every round of revision.
	Pre-Production Sample (PPS)	2X Bulk Price	Order with production, delivered early. Max 20PPS and 1 size per style/color/print. Additional sizes or 20+ counts as regular sample (3x).
	Ready Design Sample Fee	3X Bulk Price	No development cost, pay per pieces. Make samples to test colors, prints and hardware for Ready Design. Refer to Ready Design price lists.
Prints & Graphics	Logo Re-work (Optional)	\$35	If your logo is of low resolution, file corrupt, or need other adjustment or even re-creation. One-time charge.
	Packaging Development	\$10/design	Includes layout of logo/tagline/website on packaging option, mock-up for approval and actual sample.
	Other Graphic Work	\$25/hour	

# MOQ Per Order

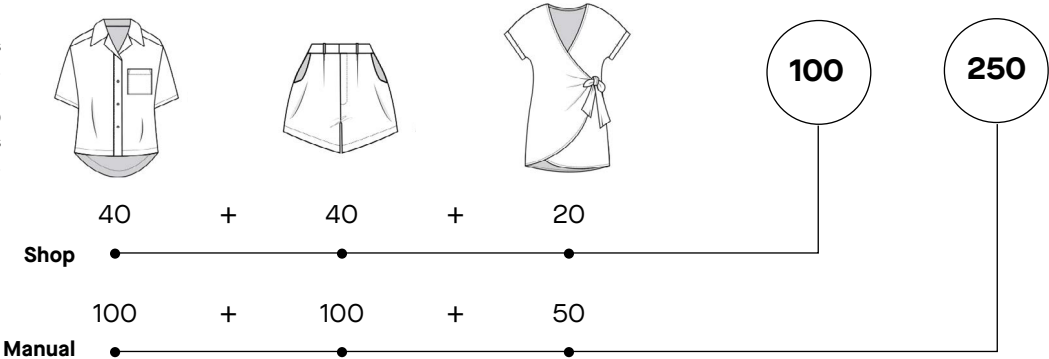
**Samples**  
No MOQ.

**Shop**  
MOQ 100 pcs/order.

**Manual (Custom Design or Mix)**  
MOQ 250 pcs/order.

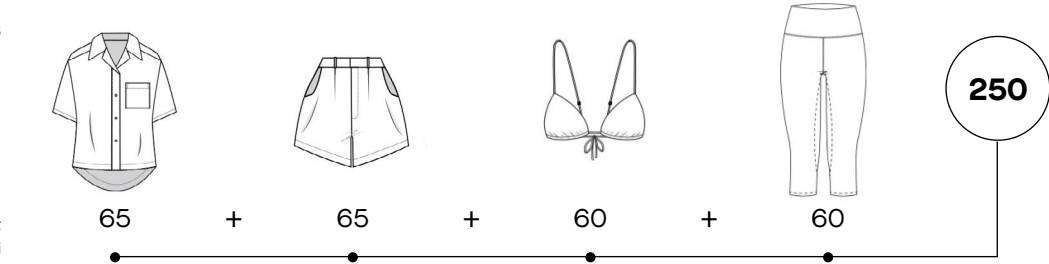
Example: You can order 40 tops,  
40 bottoms, and 20 dresses  
to reach our Shop Order MOQ.

You can order 100 tops, 100  
bottoms, and 50 dresses  
to reach our Manual Order MOQ.



You can mix women's  
resort, women's swim,  
women's plus size, and  
women's active to reach  
our MOQ. We count the  
pcs together.

Example: You can order 65 resort  
tops, 65 resort bottoms, 60 bikini  
tops, and 60 yoga pants.



## MOQ Per Style/Color/Print

Our MOQ per style and color/print is 20pcs.

Example: If you want a particular top in blue, sand and leopard print, you have to order at least 20 pcs of each.



Blue Tops



Sand Tops



Printed Tops

## MOQ Per Size

Our MOQ per size 3 pcs.  
You need to order minimum 3 of each size you want your bikini top in.

Example: If you want your blue top in a size range of XS-L, then you can order 3XS, 7S, 7M, and 3L. You can order more however you like, and use any size range you prefer, but for whatever size you choose, you need to order at least 3 pcs.



XS



S



M



L





# Ready Design 2024

**You can buy samples  
and bulk of it right now  
at [shop.baliswim.com](https://shop.baliswim.com)!**

Mix and match tops and bottoms between any styles you wish. You could even combine our designs with your own to complete your resort line. Take the designs as they are (and add your choice of colors) and you'll have a development fee-free experience (pattern making & grading)!

You only pay for what you order (the full price list can be seen at the end of this catalog).

If you want other styles or to adjust the cuts of our styles in other ways, you can - but we'll treat it as a custom design and we need to re-develop the style from scratch. This would include development fees.

Adding or switching a small accessory detail is most likely acceptable without re-development. If you have a special request, just ask! We'll do what we can to help.

We will be releasing new designs yearly, both classics and on-trend.



## How to read this catalog

- (A) Technical Drawings  
 (B) Product Details

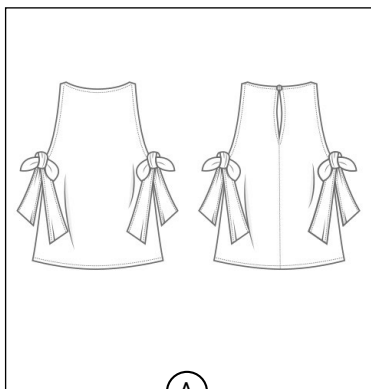
Front Image



Side Image



Back Image



(A)

TOP

### BSWR-T10

**Category:** Tank top

**Fabric:** BS Bubble Cotton (On Photo)

**Style Details:**

- Self tie side strap
- Back button opening

**Sleeve Length:** Sleeveless

**Stitching:** Basic hem stitch, Binding stitch

**Hardware:** Closure (Button)

(B)

# Tops





TOP

## BSWR-T20

**Category:** Top

**Fabric:** BS Linen Crinkle (On Photo)

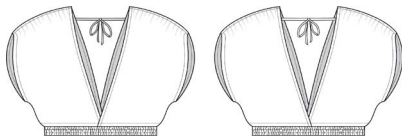
**Style Details:**

- Deep V-neckline
- Gathered shoulder detail
- Elastic underband
- Back strap opening

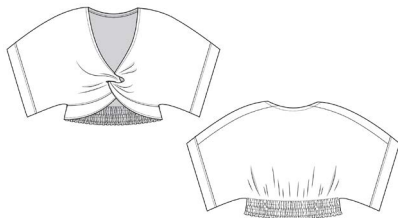
**Sleeve Length:** Short

**Stitching:** Basic hem stitch

**Hardware:** -







TOP

### BSWR-T19

**Category:** Top

**Fabric:** BS Linen 21 (On Photo)

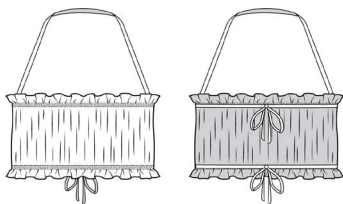
**Style Details:**

- Twist front detail
- Elastic back panel
- Low V-neck
- Roll-up sleeve

**Sleeve Length:** Short

**Stitching:** Basic hem stitch

**Hardware:** -



TOP

### BSWR-T18

**Category:** Camisole

**Fabric:** BS Bubble Cotton (On Photo)

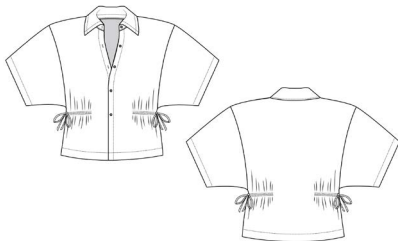
**Style Details:**

- Paper bag detailing on the top and bottom hem
- Functional drawstring

**Sleeve Length:** -

**Stitching:** Basic hem stitch

**Hardware:** -



TOP

### BSWR-T17

**Category:** Shirt

**Fabric:** BS Sateen Viscose (On Photo)

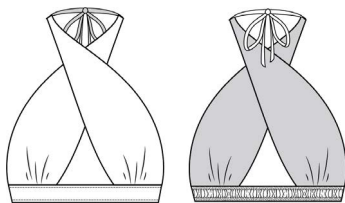
**Style Details:**

- Drop sleeve oversized shirt
- Shirt collar
- Adjustable gathered waist tie

**Sleeve Length:** Elbow-Length

**Stitching:** Basic hem stitch

**Hardware:** Closure (Button)



TOP

### BSWR-T16

**Category:** Top

**Fabric:** BS Bamboo (On Photo)

**Style Details:**

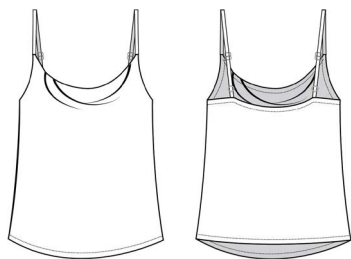
- Criss cross top
- Halter neck tie
- Elasticated back

**Sleeve Length:** -

**Stitching:** Basic hem stitch

**Hardware:** -





TOP

### BSWR-T15

**Category:** Top

**Fabric:** BS Sateen Viscose (On Photo)

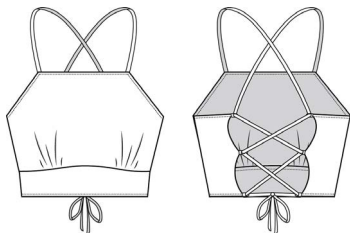
**Style Details:**

- Cowl neck
- Adjustable strap

**Sleeve Length:** -

**Stitching:** Basic hem stitch

**Hardware:** Adjustable strap (Ring, Slider)



TOP

# **BSWR-T14**

**Category:** Top

**Fabric:** BS Sateen Viscose (On Photo)

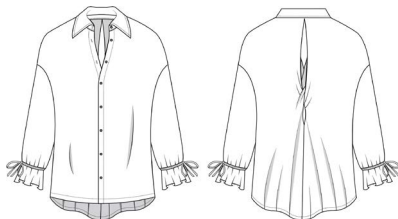
**Style Details:**

- Gathered bust detail
- Square neckline
- Curved yoke
- Strappy criss-cross opening

**Sleeve Length:** -

**Stitching:** Basic hem stitch

**Hardware:** -



TOP

### BSWR-T13

**Category:** Shirt

**Fabric:** BS Linen Crinkle (On Photo)

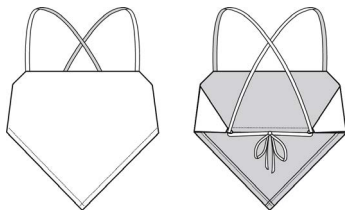
**Style Details:**

- Oversized shirt
- Drawstring ruffle cuff sleeve
- Back twist detail
- Curved hem

**Sleeve Length:** Full-length

**Stitching:** Basic hem stitch

**Hardware:** Closure (Button)



TOP

## BSWR-T12

**Category:** Top

**Fabric:** BS Linen 21 (On Photo)

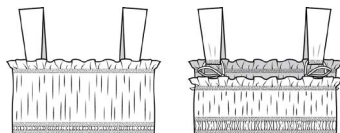
### Style Details:

- Scarf style top
- Square neckline
- Adjustable shoulder straps
- Open back design with crossover back strap
- Handkerchief / style hem

**Sleeve Length:** -

**Stitching:** Basic hem stitch

**Hardware:** -



TOP

### BSWR-T11

**Category:** Top

**Fabric:** BS Organic Cotton (On Photo)

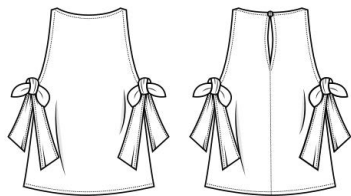
**Style Details:**

- Ruffle hem detail
- Wide shoulder strap
- Elasticated underburst
- Adjustable loop

**Sleeve Length:** -

**Stitching:** Basic hem stitch

**Hardware:** -



TOP

### BSWR-T10

**Category:** Tank top

**Fabric:** BS Bubble Cotton (On Photo)

**Style Details:**

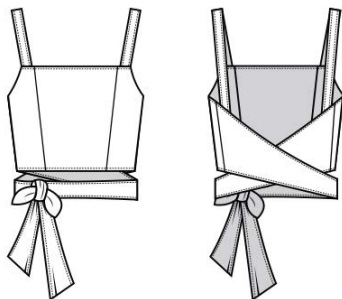
- Self tie side strap
- Back button opening

**Sleeve Length:** Sleeveless

**Stitching:** Basic hem stitch, Binding stitch

**Hardware:** Closure (Button)





TOP

### BSWR-T09

**Category:** Tank top

**Fabric:** BS Bubble Cotton (On Photo)

**Style Details:**

- Self tie strap
- Princess line yoke detail

**Sleeve Length:** -

**Stitching:** Basic hem stitch, Binding stitch

**Hardware:** -



TOP

### BSWR-T08

**Category:** Tank top

**Fabric:** BS Bamboo (On Photo)

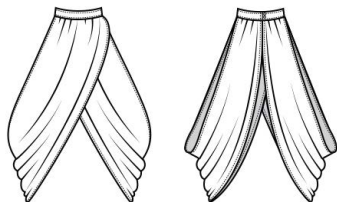
**Style Details:**

- Adjustable spaghetti strap
- Self tie front strap
- Side gather

**Sleeve Length:** -

**Stitching:** Basic hem stitch

**Hardware:** Adjustable strap (Ring, Slider)



TOP

### BSWR-T07

**Category:** Top

**Fabric:** BS Bamboo (On Photo)

**Style Details:**

- Mandarin collar
- Self fabric loop
- Neck button opening

**Sleeve Length:** -

**Stitching:** Basic hem stitch

**Hardware:** Closure (Button)



TOP

## BSWR-T06

**Category:** Shirt

**Fabric:** BS Sateen Viscose (On Photo)

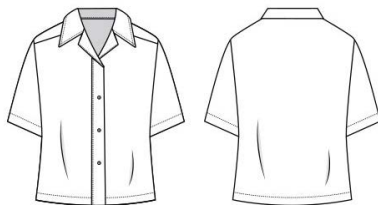
**Style Details:**

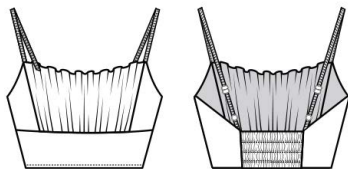
- Drop sleeve
- Notched collar

**Sleeve Length:** Elbow-length

**Stitching:** Basic hem stitch

**Hardware:** Closure (Shell Button)





TOP

## BSWR-T05

**Category:** Camisole

**Fabric:** BS Sateen Viscose (On Photo)

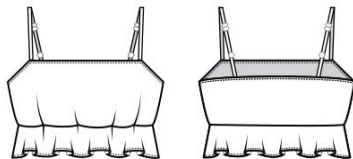
**Style Details:**

- Adjustable spaghetti straps
- Gathered bust detail
- Elastic back panel shirring

**Sleeve Length:** -

**Stitching:** Basic hem stitch

**Hardware:** Adjustable strap (Ring, Slider)



TOP

### BSWR-T04

**Category:** Camisole

**Fabric:** BS Linen 21 (On Photo)

**Style Details:**

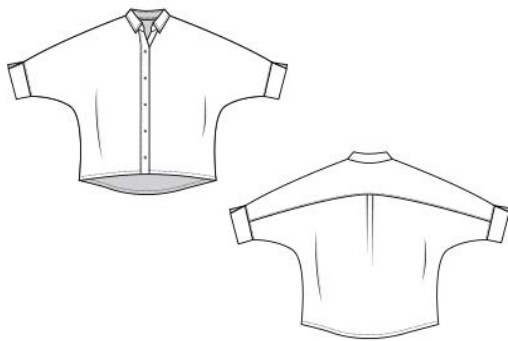
- Adjustable spaghetti straps
- Side invisible zipper
- Elastic underbust
- Ruffles

**Sleeve Length:** -

**Stitching:** Basic hem stitch

**Hardware:** Closure (Invisible Zipper),  
Adjustable Strap (Ring, Slider)





TOP

### BSWR-T03

**Category:** Shirt

**Fabric:** BS Linen 21 (On Photo)

**Style Details:**

- Dolman sleeve
- Back shoulder yoke detail
- Shirt collar
- Cuff sleeve
- Sleeve hem slit

**Sleeve Length:** Three-Quarter

**Stitching:** Basic hem stitch

**Hardware:** Closure (Button)



TOP

## BSWR-T02

**Category:** Bandeau

**Fabric:** BS Organic Cotton (On Photo)

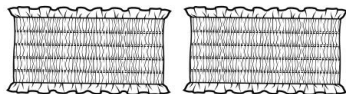
**Style Details:**

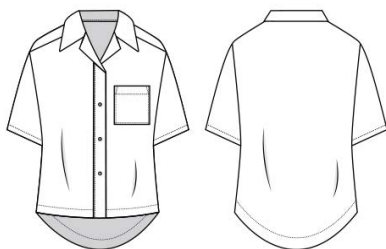
- Bandeau style
- Elastic shirring

**Sleeve Length:** -

**Stitching:** Basic hem stitch

**Hardware:** -





TOP

### BSWR-T01

**Category:** Shirt

**Fabric:** BS Organic Cotton (On Photo)

**Style Details:**

- Drop sleeve
- Notched collar
- Pocket

**Sleeve Length:** Elbow-length

**Stitching:** Basic hem stitch

**Hardware:** Closure (Button)



# Bottoms





BOTTOM

## BSWR-B20

**Category:** Skirt

**Fabric:** BS Linen Crinkle (On Photo)

**Style Details:**

- High low skirt
- Elasticated waist

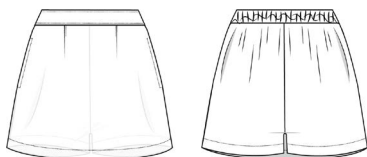
**Stitching:** Basic hem stitch

**Hardware:** -

**Inseam Length:** -

**Length:** -





BOTTOM

## BSWR-B19

**Category:** Skort

**Fabric:** BS Linen 14 (On Photo)

**Style Details:**

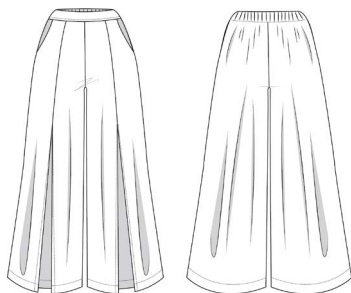
- Elasticated back waistband
- Side Pocket
- Built in shorts

**Stitching:** Basic hem stitch

**Hardware:** -

**Inseam Length:** Mini

**Length:** -



BOTTOM

### BSWR-B18

**Category:** Pants

**Fabric:** BS Bubble Cotton (On Photo)

**Style Details:**

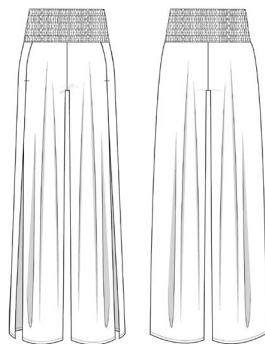
- Elasticated back waistband
- Side pocket
- Front slit
- Loose fit

**Stitching:** Basic hem stitch

**Hardware:** -

**Inseam Length:** Angkle

**Length:** -



BOTTOM

## BSWR-B17

**Category:** Pants

**Fabric:** BS Sateen Viscose (On Photo)

**Style Details:**

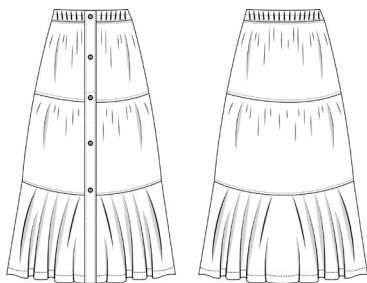
- Elasticated shirring waistband
- High side slits

**Stitching:** Basic hem stitch

**Hardware:** -

**Inseam Length:** Full

**Length:** -



BOTTOM

## BSWR-B16

**Category:** Skirt

**Fabric:** BS Bamboo (On Photo)

**Style Details:**

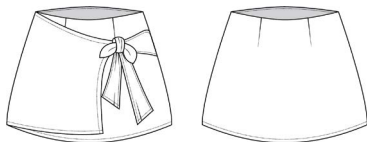
- Front button half opening
- Elastic waistband
- Gathered tiered panel

**Stitching:** Basic hem stitch

**Hardware:** Closure (Button)

**Inseam Length:** Midi

**Length:** -



BOTTOM

### BSWR-B15

**Category:** Skirt

**Fabric:** BS Sateen Viscose (On Photo)

**Style Details:**

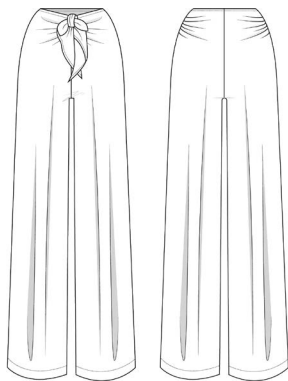
- Fixed waistband
- Side zipper opening
- Self tie strap

**Stitching:** Basic hem stitch

**Hardware:** Opening (Invisible zipper)

**Inseam Length:** Short

**Length:** -



BOTTOM

### BSWR-B14

**Category:** Pants

**Fabric:** BS Sateen Viscose (On Photo)

**Style Details:**

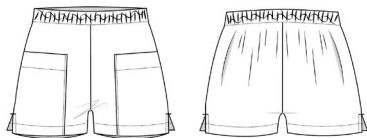
- Adjustable self tie pants
- Front tie closure

**Stitching:** Basic hem stitch

**Hardware:** -

**Inseam Length:** Full

**Length:** -



BOTTOM

### BSWR-B13

**Category:** Shorts

**Fabric:** BS Linen Crinkle (On Photo)

**Style Details:**

- Front patch pocket
- Elastic waistband

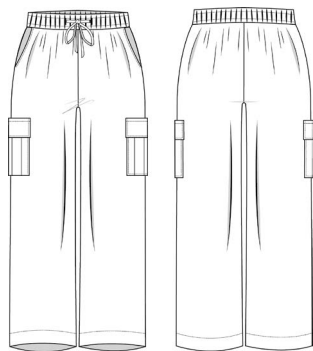
**Stitching:** Basic hem stitch

**Hardware:** -

**Inseam Length:** Short

**Length:** -





BOTTOM

## BSWR-B12

**Category:** Pants

**Fabric:** BS Linen 14 (On Photo)

**Style Details:**

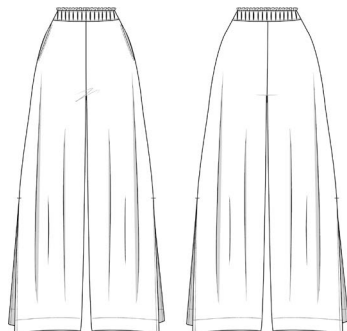
- Elastic waistband with drawstring
- Side pocket
- Patch pocket
- Relaxed fit

**Stitching:** Basic hem stitch

**Hardware:** -

**Inseam Length:** Ankle length

**Length:** -



BOTTOM

## BSWR-B11

**Category:** Pants

**Fabric:** BS Organic Cotton (On Photo)

**Style Details:**

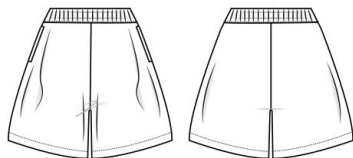
- Elastic paperbag waistband
- Side pocket
- Side slit

**Stitching:** Basic hem stitch

**Hardware:** -

**Inseam Length:** Ankle length

**Length:** -



BOTTOM

## BSWR-B10

**Category:** Shorts

**Fabric:** BS Bubble Cotton (On Photo)

**Style Details:**

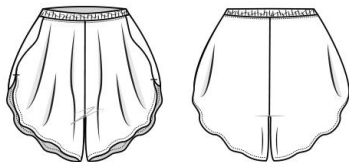
- Elastic waistband
- Side pocket
- Slit on both sides

**Stitching:** Basic hem stitch

**Hardware:** -

**Inseam Length:** Short

**Length:** -



BOTTOM

## BSWR-B09

**Category:** Shorts

**Fabric:** BS Bubble Cotton (On Photo)

**Style Details:**

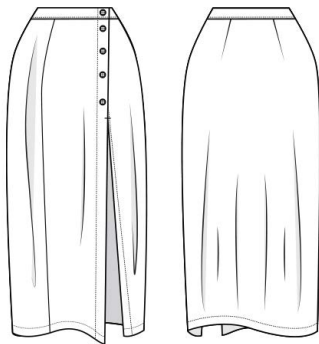
- Overlapped back panel
- Elastic waistband

**Stitching:** Basic hem stitch, Lettuce hem stitch

**Hardware:** -

**Inseam Length:** Short

**Length:** -



BOTTOM

## BSWR-B08

**Category:** Skirt

**Fabric:** BS Bamboo (On Photo)

**Style Details:**

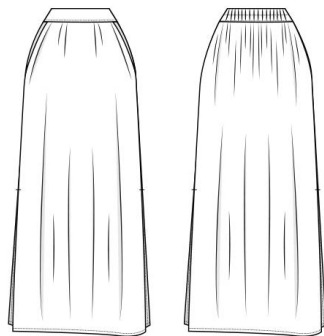
- Fixed waistband
- Front slit
- Button opening

**Stitching:** Basic hem stitch

**Hardware:** Closure (Button)

**Inseam Length:** -

**Length:** Midi



BOTTOM

**BSWR-B07**

**Category:** Skirt

**Fabric:** BS Bamboo (On Photo)

**Style Details:**

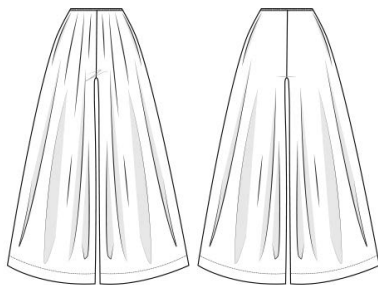
- Back waistband elastic
- Side slit

**Stitching:** Basic hem stitch

**Hardware:** -

**Inseam Length:** -

**Length:** Maxi



BOTTOM

## BSWR-B06

**Category:** Pants

**Fabric:** BS Sateen Viscose (On Photo)

**Style Details:**

- Elastic waistband
- Side pocket
- Hidden drawstring

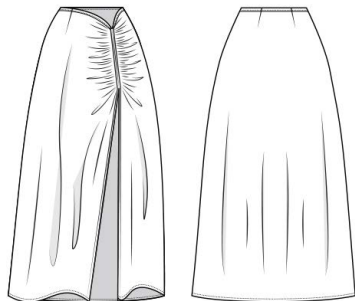
**Stitching:** Basic hem stitch

**Hardware:** -

**Inseam Length:** Ankle length

**Length:** -





BOTTOM

### BSWR-B05

**Category:** Skirt

**Fabric:** BS Sateen Viscose (On Photo)

**Style Details:**

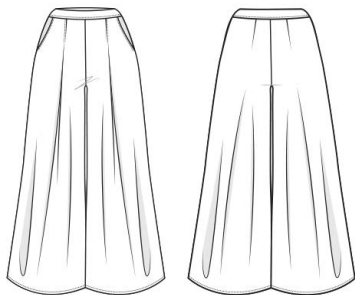
- Gathered front slit
- Side opening

**Stitching:** Basic hem stitch, Binding stitch

**Hardware:** Closure (Invisible Zipper, Hook & Eye)

**Inseam Length:** -

**Length:** Midi



BOTTOM

### BSWR-B04

**Category:** Pants

**Fabric:** BS Linen 14 (On Photo)

**Style Details:**

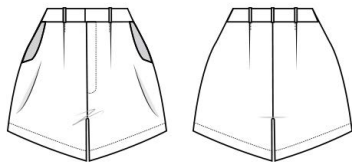
- Fixed waistband
- Side pocket

**Stitching:** Basic hem stitch

**Hardware:** Closure (Invisible Zipper, Hook & Eye)

**Inseam Length:** Midi

**Length:** -



BOTTOM

### BSWR-B03

**Category:** Shorts

**Fabric:** BS Linen 14 (On Photo)

**Style Details:**

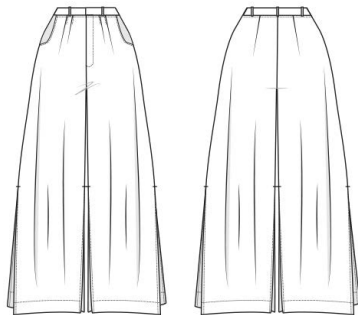
- Fixed waistband
- Side pocket
- Belt loop

**Stitching:** Basic hem stitch

**Hardware:** Closure (Front Zipper, Hook & Bar)

**Inseam Length:** Short

**Length:** -



BOTTOM

## BSWR-B02

**Category:** Pants

**Fabric:** BS Organic Cotton (On Photo)

**Style Details:**

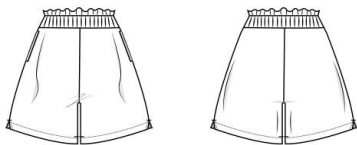
- Fixed waistband
- Side pocket
- Belt loop
- Side slit

**Stitching:** Basic hem stitch

**Hardware:** Closure (Front Zipper, Hook & Bar)

**Inseam Length:** Ankle length

**Length:** -



BOTTOM

### BSWR-B01

**Category:** Shorts

**Fabric:** BS Organic Cotton (On Photo)

**Style Details:**

- Elastic paperbag waistband
- Side pocket
- Side slit

**Stitching:** Basic hem stitch

**Hardware:** -

**Inseam Length:** Short

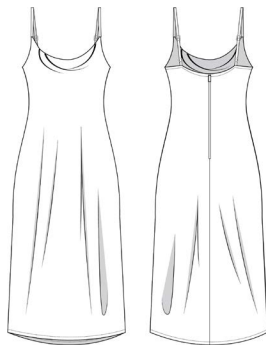
**Length:** -



# Dresses







DRESS

### BSWR-D15

**Fabric:** BS Sateen Viscose (On Photo)

**Style Details:**

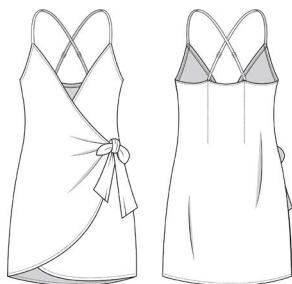
- Cowl neck
- Adjustable shoulder straps

**Sleeve length:** -

**Stitching:** Basic hem stitch

**Hardware:** Opening (Invisible Zipper)  
Adjustable strap (Ring, Slider)

**Length:** Mini



DRESS

# **BSWR-D14**

**Fabric:** BS Sateen Viscose (On Photo)

## **Style Details:**

- Wrap style
- Tulip hem
- Adjustable shoulder straps
- Criss cross back

**Sleeve length:** -

**Stitching:** Basic hem stitch

**Hardware:** Adjustable strap (Ring, Slider)

**Length:** Mini



DRESS

### BSWR-D13

**Fabric:** BS Sateen Viscose (On Photo)

**Style Details:**

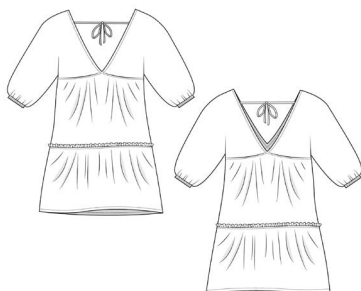
- Front cut out detail
- Adjustable spaghetti straps
- Back zipper opening

**Sleeve length:** -

**Stitching:** Basic hem stitch

**Hardware:** Opening (Invisible Zipper)  
Adjustable strap (Ring, Slider)

**Length:** Maxi



DRESS

### BSWR-D12

**Fabric:** BS Linen 14 (On Photo)

**Style Details:**

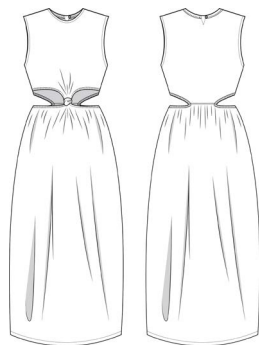
- Low V-neck
- Elasticated dolman sleeve
- Gathered tiered panel
- Back strap opening

**Sleeve length:** Elbow Length

**Stitching:** Basic hem stitch

**Hardware:** -

**Length:** Mini



DRESS

### BSWR-D11

**Fabric:** BS Linen 14 (On Photo)

**Style Details:**

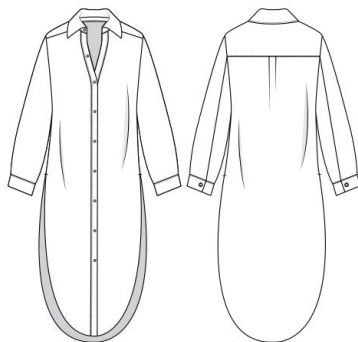
- Side waist cut out with elastic
- Front knot detail
- Back button opening

**Sleeve length:** Sleeveless

**Stitching:** Basic hem stitch

**Hardware:** Closure (Button)

**Length:** Midi



DRESS

### BSWR-D10

**Fabric:** BS Bubble Cotton (On Photo)

**Style Details:**

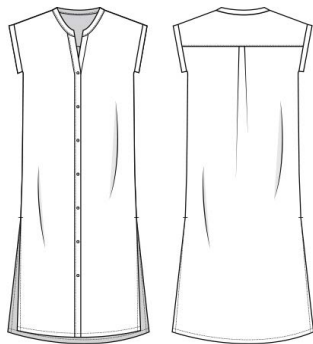
- Shirt collar
- Drop sleeve
- Single cuff sleeve
- Can be worn as tied up top

**Sleeve length:** Full-length

**Stitching:** Basic hem stitch

**Hardware:** Closure (Button)

**Length:** Midi



DRESS

### BSWR-D09

**Fabric:** BS Bubble Cotton (On Photo)

**Style Details:**

- Mandarin collar
- Dolman sleeve
- Side slit
- Front button opening

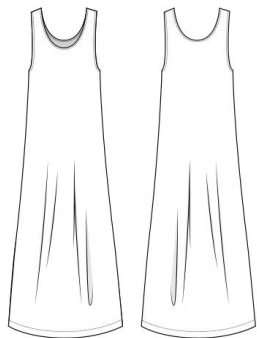
**Sleeve length:** Cap sleeve

**Stitching:** Basic hem stitch

**Hardware:** Closure (Button)

**Length:** Midi





DRESS

### BSWR-D08

**Fabric:** BS Bamboo (On Photo)

**Style Details:**

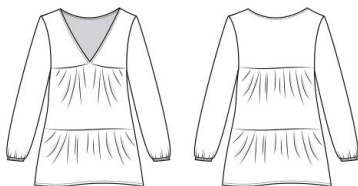
- Loose fit
- Removeable tie belt

**Sleeve length:** -

**Stitching:** Basic hem stitch

**Hardware:** -

**Length:** Midi



DRESS

### BSWR-D07

**Fabric:** BS Bamboo (On Photo)

**Style Details:**

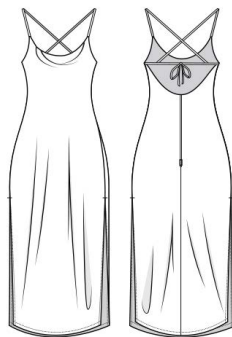
- Low V-neck
- Elastic sleeve cuff
- Gathered tiered panel

**Sleeve length:** Full-length

**Stitching:** Basic hem stitch

**Hardware:** -

**Length:** Mini



DRESS

### BSWR-D06

**Fabric:** BS Sateen Viscose (On Photo)

**Style Details:**

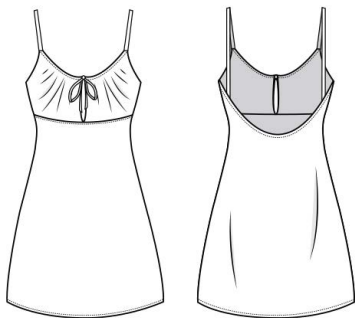
- Cowl neck
- Adjustable tie strap
- Side slit
- Strappy opening

**Sleeve length:** -

**Stitching:** Basic hem stitch

**Hardware:** Closure (Invisible Zipper)

**Length:** Midi



DRESS

### BSWR-D05

**Fabric:** BS Sateen Viscose (On Photo)

**Style Details:**

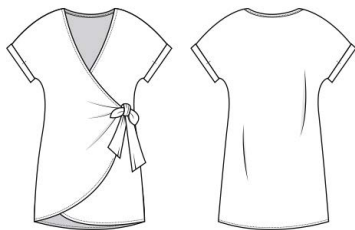
- Adjustable tie strap
- Bust gathered panel
- Keyhole opening

**Sleeve length:** -

**Stitching:** Basic hem stitch

**Hardware:** -

**Length:** Mini



DRESS

### BSWR-D04

**Fabric:** BS Linen 14 (On Photo)

**Style Details:**

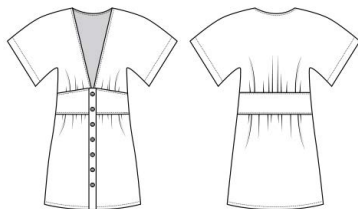
- Dolman sleeve
- Roll-up sleeve
- Wrap opening

**Sleeve length:** Short

**Stitching:** Basic hem stitch

**Hardware:** -

**Length:** Mini



DRESS

### BSWR-D03

**Fabric:** BS Linen 14 (On Photo)

**Style Details:**

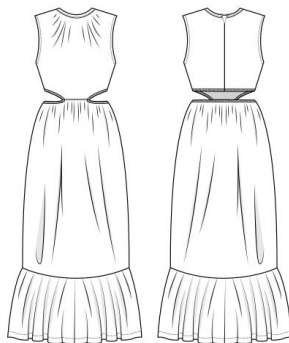
- Dolman sleeve
- Gathered detail
- Fixed waistband
- Front button opening

**Sleeve length:** Elbow-length

**Stitching:** Basic hem stitch

**Hardware:** Closure (Button)

**Length:** Mini



DRESS

### BSWR-D02

**Fabric:** BS Organic Cotton (On Photo)

**Style Details:**

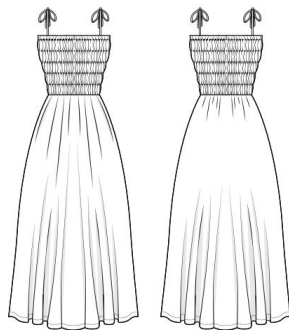
- Elasticat waist cutout
- Ruffle hem
- Back button opening

**Sleeve length:** Sleeveless

**Stitching:** Basic hem stitch

**Hardware:** Opening (Button)

**Length:** Midi



DRESS

### BSWR-D01

**Fabric:** BS Organic Cotton (On Photo)

**Style Details:**

- Adjustable tie strap
- Side pocket
- Elastic bust shirring

**Sleeve length:** -

**Stitching:** Basic hem stitch, Lettuce hem

**Hardware:** -

**Length:** Midi





# Kaftans & Kimonos





KIMONO

### BSWR-K08

**Fabric:** BS Cotton Bubble (On Photo)

**Style Details:**

- Front tie opening
- Dolman sleeve

**Sleeve length:** Full-Length

**Stitching:** Lettuce hem stitch

**Hardware:** -

**Length:** -



KIMONO

### BSWR-K07

**Fabric:** BS Viscose Sateen (On Photo)

**Style Details:**

- Kimono style
- Drop shoulder
- Removable belt

**Sleeve length:** Three-Quarter

**Stitching:** Basic hem stitch

**Hardware:** -

**Length:** -



KIMONO

### BSWR-K06

**Fabric:** BS Linen 14 (On Photo)

**Style Details:**

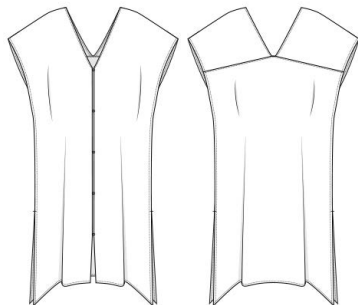
- Kimono style
- Drop shoulder
- Removable belt

**Sleeve length:** Full-Length

**Stitching:** Basic hem stitch

**Hardware:** -

**Length:** -



KAFTAN

**BSWR-K05**

**Fabric:** BS Sahara (On Photo)

**Style Details:**

- V-neck
- Dolman sleeve
- Side slit
- Front button opening

**Sleeve length:** Elbow-length

**Stitching:** Basic hem stitch

**Hardware:** Closure (Button)

**Length:** Midi



KAFTAN

### BSWR-K04

**Fabric:** BS Sahara (On Photo)

**Style Details:**

- Adjustable gathered waist tie
- Drop sleeve
- Side slit

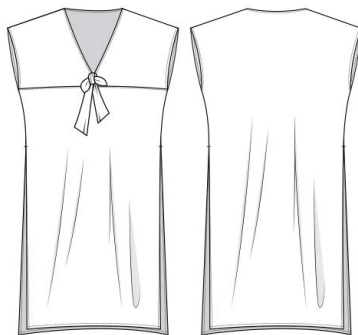
**Sleeve length:** Three-Quarter

**Stitching:** Basic hem stitch

**Hardware:** -

**Length:** Midi





KAFTAN

### BSWR-K03

**Fabric:** BS Sahara (On Photo)

**Style Details:**

- Front tie bow
- Dolman sleeve
- Side slit

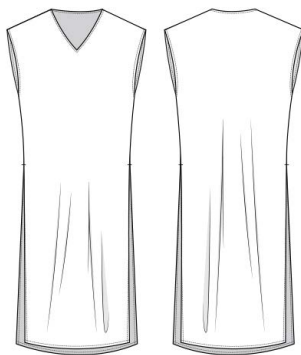
**Sleeve length:** Elbow-length

**Stitching:** Basic hem stitch

**Hardware:** -

**Length:** Midi





KAFTAN

### BSWR-K02

**Fabric:** BS Sahara (On Photo)

**Style Details:**

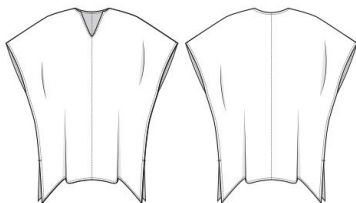
- V-neck
- Dolman sleeve
- Side slit

**Sleeve length:** Short

**Stitching:** Basic hem stitch

**Hardware:** -

**Length:** Midi



KAFTAN

### BSWR-K01

**Fabric:** BS Sahara (On Photo)

**Style Details:**

- Slit V-neck
- Dolman sleeve
- Side slit

**Sleeve length:** Elbow-length

**Stitching:** Basic hem stitch

**Hardware:** -

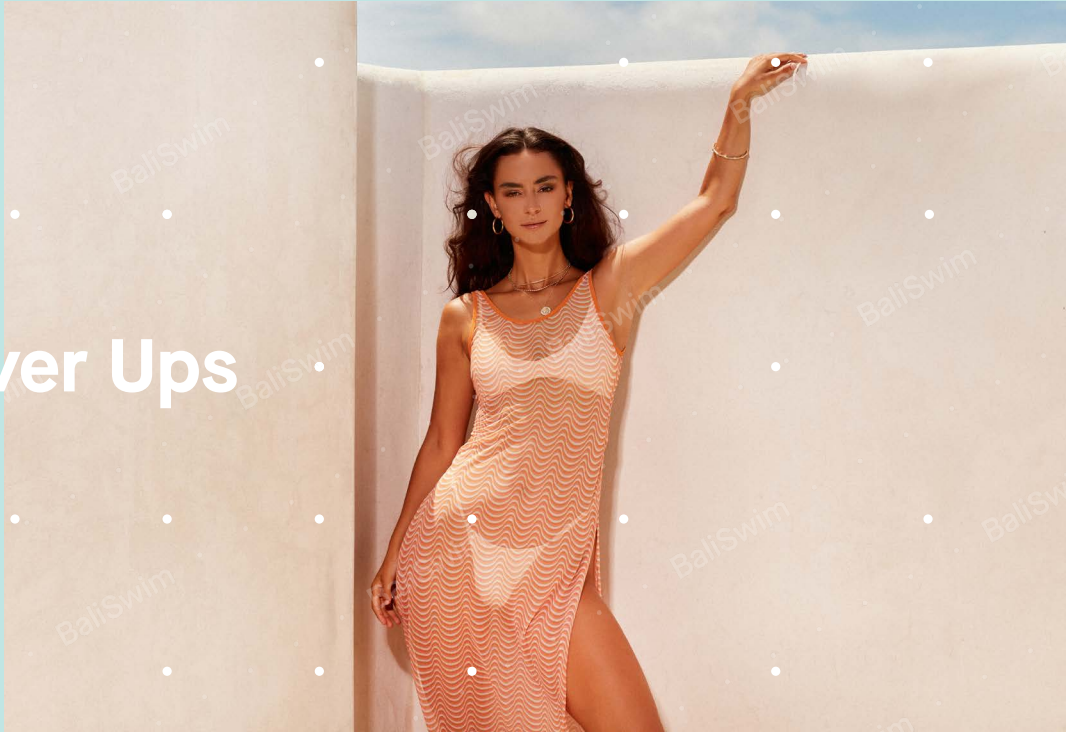
**Length:** Mini

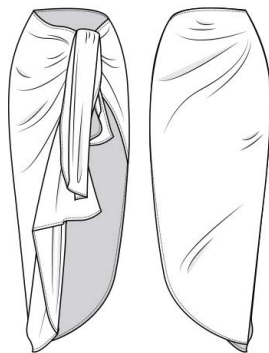






# · Cover Ups ·





COVER UP

**BSWR-C13**

**Category:** Sarong

**Fabric:** BS Sahara (On Photo)

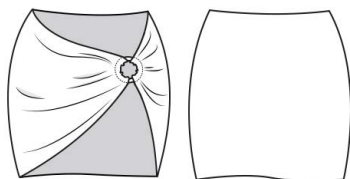
**Style Details:** -

**Stitching:** Basic hem stitch

**Hardware:** -

**Inseam Length:** -

**Length:** Full length



COVER UP

### BSWR-C12

**Category:** Skirt

**Fabric:** BS Matte (On Photo)

**Style Details:**

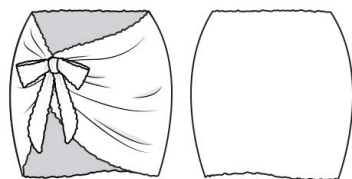
- Resin O-Ring detail

**Stitching:** Double needle, Cover stitch

**Hardware:** Resin O-Ring

**Inseam Length:** -

**Length:** Mini



COVER UP

### BSWR-C11

**Category:** Skirt

**Fabric:** Carvico VITA (On Photo)

**Style Details:**

- Tie wrap style

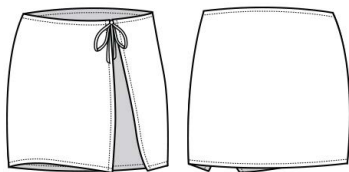
**Stitching:** Lettuce hem

**Hardware:** -

**Inseam Length:** -

**Length:** Mini





COVER UP

### BSWR-C10

**Category:** Skirt

**Fabric:** BS Poly Mesh (On Photo)

**Style Details:**

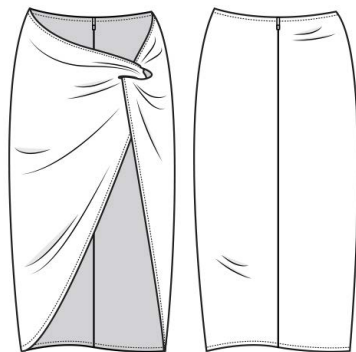
- Strap detail

**Stitching:** Single needle, Binding hem, Hem stitch

**Hardware:** -

**Inseam Length:** -

**Length:** Mini



COVER UP

**BSWR-C09**

**Category:** Skirt

**Fabric:** Carvico VITA (On Photo)

**Style Details:**

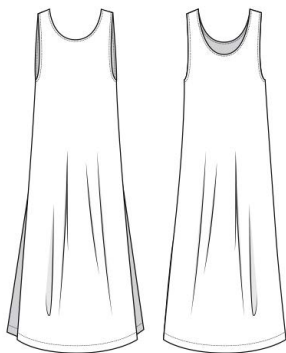
- Interloop chain

**Stitching:** Cover stitch

**Hardware:** -

**Inseam Length:** -

**Length:** Midi



COVER UP

### BSWR-C08

**Category:** Dress

**Fabric:** BS Poly Mesh (On Photo)

**Style Details:**

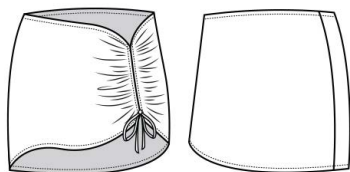
- Dress style
- Side slits detail

**Stitching:** Single needle, Cover stitch,  
Double needles, Binding hem

**Hardware:** -

**Inseam Length:** -

**Length:** Full length



COVER UP

### BSWR-C07

**Category:** Skirt

**Fabric:** Carvico VITA (On Photo)

**Style Details:**

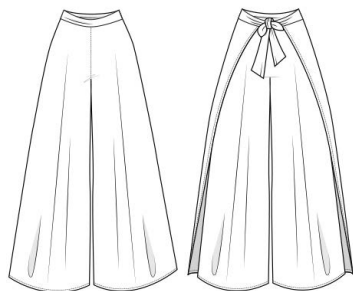
- Adjustable Gathered detail

**Stitching:** Cover stitch

**Hardware:** -

**Inseam Length:** -

**Length:** Mini



COVER UP

### BSWR-C06

**Category:** Pants

**Fabric:** BS Bamboo Crepe (On Photo)

**Style Details:**

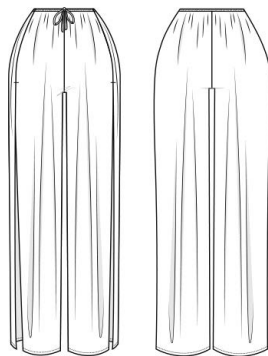
- Side overlaps
- Front - Back ties

**Stitching:** Basic hem stitch

**Hardware:** -

**Inseam Length:** Full length

**Length:** -



COVER UP

### BSWR-C05

**Category:** Pants

**Fabric:** BS Bamboo Crepe (On Photo)

**Style Details:**

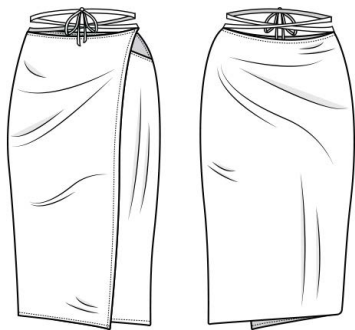
- Side overlaps
- Front - Back ties

**Stitching:** Basic hem stitch

**Hardware:** -

**Inseam Length:** Full length

**Length:** -



COVER UP

**BSWR-C04**

**Category:** Skirt

**Fabric:** BS Bamboo Crepe (On Photo)

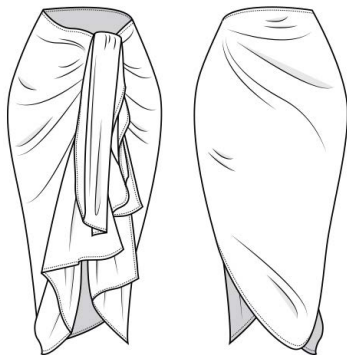
**Style Details:** Strap-ties over the waist

**Stitching:** Basic hem stitch

**Hardware:** -

**Inseam Length:** -

**Length:** Midi



COVER UP

**BSWR-C03**

**Category:** Pants

**Fabric:** BS Sahara (On Photo)

**Style Details:** -

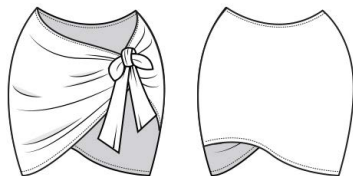
**Stitching:** Basic hem stitch

**Hardware:** -

**Inseam Length:** -

**Length:** Midi





COVER UP

## BSWR-C02

**Category:** Skirt

**Fabric:** BS Bamboo Crepe (On Photo)

**Style Details:**

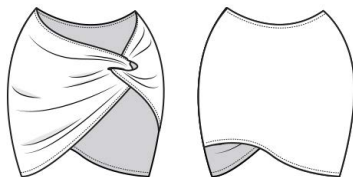
- Gathered Hip-tie

**Stitching:** Basic hem stitch

**Hardware:** -

**Inseam Length:** -

**Length:** Mini



COVER UP

### BSWR-C01

**Category:** Skirt

**Fabric:** BS Poly Spandex (On Photo)

**Style Details:**

- Interloop chain

**Stitching:** Basic hem stitch

**Hardware:** -

**Inseam Length:** -

**Length:** Mini



## Standard Size Chart WOMEN'S RESORT | 2024 VERSION



International Sizing	XS	S	M	L	XL
US	4	6	8	10	12
AU/UK Old	8	10	12	14	16
AU/UK New	6	8	10	12	14
<b>Bust (cm)</b>	83	87	91	95	99
<b>Waist (cm)</b>	65	69	73	77	81
<b>Lower Hip (cm)</b>	91	95	99	103	107
<b>Inside Leg Length (cm)</b>	72.5	73.5	74.5	76.5	76.5
<b>Bust (in)</b>	32.7	34.3	35.8	37.4	39
<b>Waist (in)</b>	25.6	27.2	28.7	30.3	31.9
<b>Lower Hip (in)</b>	35.8	37.4	39	40.6	42.1
<b>Inside Leg Length (in)</b>	28.5	28.9	29.3	29.7	30.1

Use a tape measure to measure, holding the tape securely around for key points.

- Ⓐ **Bust.** Measure over the fullest area of the bust & straight around the back.
- Ⓑ **Waist.** Measure waist under the rib cage and above the hip.
- Ⓒ **Lower Hip.** Measure the fullest part of the hip ensuring the tape is straight around the body.
- Ⓓ **Inside Leg Length.** Measure the inner thighs from below the crotch straight to the floor level.

# Women's Resort Price List

Ready Design

Code	Bali Swim Linen 21	Bali Swim Linen 17	Bali Swim Linen 14		Bali Swim Poly Linen	Bali Swim Organic Cotton	Bali Swim Sateen Viscose	Bali Swim Poly Sateen	Bali Swim Bamboo	Bali Swim Poly Rayon	Bali Swim Bubble Cotton		Bali Swim Linen Crinkle
	Solid	Color	Solid	Color	Print	Solid	Solid	Print	Solid	Print	Solid	Color	Solid
BSWR-T20	-	-	-	-	-	-	-	-	-	-	\$18 <sup>95</sup>	\$19 <sup>95</sup>	\$26 <sup>95</sup>
BSWR-T19	\$21 <sup>95</sup>	\$21 <sup>95</sup>	-	-	\$20 <sup>95</sup>	\$18 <sup>95</sup>	-	-	-	-	-	-	-
BSWR-T18	-	-	-	-	-	-	-	-	-	-	\$14 <sup>95</sup>	\$17 <sup>95</sup>	\$18 <sup>95</sup>
BSWR-T17	-	-	-	-	-	-	\$23 <sup>95</sup>	\$29 <sup>95</sup>	\$21 <sup>95</sup>	\$29 <sup>95</sup>	-	-	-
BSWR-T16	-	-	-	-	-	-	\$16 <sup>95</sup>	\$18 <sup>95</sup>	\$15 <sup>95</sup>	\$28 <sup>95</sup>	-	-	-
BSWR-T15	-	-	-	-	-	-	\$18 <sup>95</sup>	\$23 <sup>95</sup>	\$18 <sup>95</sup>	\$18 <sup>95</sup>	-	-	-
BSWR-T14	-	-	-	-	-	-	\$16 <sup>95</sup>	\$20 <sup>95</sup>	\$16 <sup>95</sup>	\$22 <sup>95</sup>	-	-	-
BSWR-T13	-	-	-	-	-	-	-	-	-	-	\$24 <sup>95</sup>	\$27 <sup>95</sup>	\$35 <sup>95</sup>
BSWR-T12	\$16 <sup>95</sup>	\$16 <sup>95</sup>	-	-	\$23 <sup>95</sup>	\$14 <sup>95</sup>	-	-	-	-	-	-	-
BSWR-T11	\$19 <sup>95</sup>	\$19 <sup>95</sup>	-	-	\$26 <sup>95</sup>	\$17 <sup>95</sup>	-	-	-	-	-	-	-
BSWR-T10	-	-	-	-	-	-	-	-	-	-	\$17 <sup>95</sup>	\$19 <sup>95</sup>	-
BSWR-T09	-	-	-	-	-	-	-	-	-	-	\$16 <sup>95</sup>	\$18 <sup>95</sup>	-
BSWR-T08	-	-	-	-	-	-	\$19 <sup>95</sup>	-	\$18 <sup>95</sup>	-	-	-	-
BSWR-T07	-	-	-	-	-	-	\$18 <sup>95</sup>	-	\$17 <sup>95</sup>	-	-	-	-
BSWR-T06	-	-	-	-	-	-	\$22 <sup>95</sup>	-	\$21 <sup>95</sup>	-	-	-	-
BSWR-T05	-	-	-	-	-	-	\$20 <sup>95</sup>	-	\$19 <sup>95</sup>	-	-	-	-
BSWR-T04	\$22 <sup>95</sup>	-	-	-	-	\$20 <sup>95</sup>	-	-	-	-	-	-	-
BSWR-T03	\$29 <sup>95</sup>	-	-	-	-	\$21 <sup>95</sup>	-	-	-	-	-	-	-

\*T = Top, \*B = Bottom, \*D = Dress, \*K = Kaftan, \*C = Cover Up, \*O = Outer. Print prices for natural fabric are in Bali Swim prints only.

# Women's Resort Price List

Ready Design

Code	Bali Swim Linen 21	Bali Swim Linen 17	Bali Swim Linen 14		Bali Swim Poly Linen	Bali Swim Organic Cotton	Bali Swim Sateen Viscose	Bali Swim Poly Sateen	Bali Swim Bamboo	Bali Swim Poly Rayon	Bali Swim Bubble Cotton		Bali Swim Linen Crinkle
	Solid	Color	Solid	Color	Print	Solid	Solid	Print	Solid	Print	Solid	Color	Solid
BSWR-T02	\$19 <sup>95</sup>	-	-	-	-	\$17 <sup>95</sup>	-	-	-	-	-	-	-
BSWR-T01	\$27 <sup>95</sup>	-	-	-	-	\$20 <sup>95</sup>	-	-	-	-	-	-	-
BSWR-B20	-	-	-	-	-	-	-	-	-	-	\$18 <sup>95</sup>	\$19 <sup>95</sup>	\$35 <sup>95</sup>
BSWR-B19	-	-	\$23 <sup>95</sup>	\$24 <sup>95</sup>	\$20 <sup>95</sup>	\$24 <sup>95</sup>	-	-	-	-	-	-	-
BSWR-B18	-	-	-	-	-	-	-	-	-	-	\$14 <sup>95</sup>	\$17 <sup>95</sup>	\$33 <sup>95</sup>
BSWR-B17	-	-	-	-	-	-	\$26 <sup>95</sup>	\$29 <sup>95</sup>	\$23 <sup>95</sup>	\$28 <sup>95</sup>	-	-	-
BSWR-B16	-	-	-	-	-	-	\$30 <sup>95</sup>	\$35 <sup>95</sup>	\$17 <sup>95</sup>	\$32 <sup>95</sup>	-	-	-
BSWR-B15	-	-	-	-	-	-	\$22 <sup>95</sup>	\$25 <sup>95</sup>	\$20 <sup>95</sup>	\$24 <sup>95</sup>	-	-	-
BSWR-B14	-	-	-	-	-	-	\$30 <sup>95</sup>	\$37 <sup>95</sup>	\$18 <sup>95</sup>	\$36 <sup>95</sup>	-	-	-
BSWR-B13	-	-	-	-	-	-	-	-	-	-	\$17 <sup>95</sup>	\$18 <sup>95</sup>	\$15 <sup>95</sup>
BSWR-B12	-	-	\$29 <sup>95</sup>	\$30 <sup>95</sup>	\$34 <sup>95</sup>	\$23 <sup>95</sup>	-	-	-	-	-	-	-
BSWR-B11	-	-	\$30 <sup>95</sup>	\$31 <sup>95</sup>	\$35 <sup>95</sup>	\$23 <sup>95</sup>	-	-	-	-	-	-	-
BSWR-B10	-	-	-	-	-	-	-	-	-	-	\$19 <sup>95</sup>	\$20 <sup>95</sup>	-
BSWR-B09	-	-	-	-	-	-	-	-	-	-	\$18 <sup>95</sup>	\$19 <sup>95</sup>	-
BSWR-B08	-	-	-	-	-	-	\$23 <sup>95</sup>	-	\$22 <sup>95</sup>	-	-	-	-
BSWR-B07	-	-	-	-	-	-	\$30 <sup>95</sup>	-	\$27 <sup>95</sup>	-	-	-	-
BSWR-B06	-	-	-	-	-	-	\$30 <sup>95</sup>	-	\$27 <sup>95</sup>	-	-	-	-
BSWR-B05	-	-	-	-	-	-	\$25 <sup>95</sup>	-	\$24 <sup>95</sup>	-	-	-	-

\*T = Top, \*B = Bottom, \*D = Dress, \*K = Kaftan, \*C = Cover Up, \*O = Outer. Print prices for natural fabric are in Bali Swim prints only.

# Women's Resort Price List

Ready Design

Code	Bali Swim Linen 21	Bali Swim Linen 17	Bali Swim Linen 14		Bali Swim Poly Linen	Bali Swim Organic Cotton	Bali Swim Sateen Viscose	Bali Swim Poly Sateen	Bali Swim Bamboo	Bali Swim Poly Rayon	Bali Swim Bubble Cotton		Bali Swim Linen Crinkle
	Solid	Color	Solid	Color	Print	Solid	Solid	Print	Solid	Print	Solid	Color	Solid
BSWR-B04	-	-	\$32 <sup>95</sup>	\$22 <sup>95</sup>	-	\$25 <sup>95</sup>	-	-	-	-	-	-	-
BSWR-B03	-	-	\$22 <sup>95</sup>	\$25 <sup>95</sup>	-	\$19 <sup>95</sup>	-	-	-	-	-	-	-
BSWR-B02	-	-	\$31 <sup>95</sup>	\$35 <sup>95</sup>	-	\$24 <sup>95</sup>	-	-	-	-	-	-	-
BSWR-B01	-	-	\$20 <sup>95</sup>	\$23 <sup>95</sup>	-	\$17 <sup>95</sup>	-	-	-	-	-	-	-
BSWR-D15	-	-	-	-	-	-	\$28 <sup>95</sup>	\$27 <sup>95</sup>	\$21 <sup>95</sup>	\$26 <sup>95</sup>	-	-	-
BSWR-D14	-	-	-	-	-	-	\$20 <sup>95</sup>	\$29 <sup>95</sup>	\$22 <sup>95</sup>	\$27 <sup>95</sup>	-	-	-
BSWR-D13	-	-	-	-	-	-	\$28 <sup>95</sup>	\$31 <sup>95</sup>	\$23 <sup>95</sup>	\$29 <sup>95</sup>	-	-	-
BSWR-D12	-	-	\$36 <sup>95</sup>	\$38 <sup>95</sup>	\$56 <sup>95</sup>	\$27 <sup>95</sup>	-	-	-	-	-	-	-
BSWR-D11	-	-	\$30 <sup>95</sup>	\$31 <sup>95</sup>	\$46 <sup>95</sup>	\$23 <sup>95</sup>	-	-	-	-	-	-	-
BSWR-D10	-	-	-	-	-	-	-	-	-	-	\$27 <sup>95</sup>	\$30 <sup>95</sup>	-
BSWR-D09	-	-	-	-	-	-	-	-	-	-	\$24 <sup>95</sup>	\$26 <sup>95</sup>	-
BSWR-D08	-	-	-	-	-	-	\$30 <sup>95</sup>	-	\$26 <sup>95</sup>	-	-	-	-
BSWR-D07	-	-	-	-	-	-	\$27 <sup>95</sup>	-	\$25 <sup>95</sup>	-	-	-	-
BSWR-D06	-	-	-	-	-	-	\$25 <sup>95</sup>	-	\$23 <sup>95</sup>	-	-	-	-
BSWR-D05	-	-	-	-	-	-	\$19 <sup>95</sup>	-	\$18 <sup>95</sup>	-	-	-	-
BSWR-D04	-	-	\$27 <sup>95</sup>	\$30 <sup>95</sup>	-	\$22 <sup>95</sup>	-	-	-	-	-	-	-
BSWR-D03	-	-	\$29 <sup>95</sup>	\$32 <sup>95</sup>	-	\$24 <sup>95</sup>	-	-	-	-	-	-	-

\*T = Top, \*B = Bottom, \*D = Dress, \*K = Kaftan, \*C = Cover Up, \*O = Outer. Print prices for natural fabric are in Bali Swim prints only.

# Women's Resort Price List

Ready Design

Code	Bali Swim Linen 21	Bali Swim Linen 17	Bali Swim Linen 14		Bali Swim Poly Linen	Bali Swim Organic Cotton	Bali Swim Sateen Viscose	Bali Swim Poly Sateen	Bali Swim Bamboo	Bali Swim Poly Rayon	Bali Swim Bubble Cotton		Bali Swim Linen Crinkle
	Solid	Color	Solid	Color	Print	Solid	Solid	Print	Solid	Print	Solid	Color	Solid
BSWR-D02	-	-	\$31 <sup>95</sup>	\$34 <sup>95</sup>	-	\$26 <sup>95</sup>	-	-	-	-	-	-	-
BSWR-D01	-	-	\$36 <sup>95</sup>	\$40 <sup>95</sup>	-	\$28 <sup>95</sup>	-	-	-	-	-	-	-
BSWR-K08	-	-	-	-	-	-	-	-	-	-	\$21 <sup>95</sup>	\$23 <sup>95</sup>	\$29 <sup>95</sup>
BSWR-K07	-	-	-	-	-	-	\$34 <sup>95</sup>	\$42 <sup>95</sup>	\$29 <sup>95</sup>	\$39 <sup>95</sup>	-	-	-
BSWR-K06	-	-	\$32 <sup>95</sup>	\$34 <sup>95</sup>	\$50 <sup>95</sup>	\$25 <sup>95</sup>	-	-	-	-	-	-	-

\*T = Top, \*B = Bottom, \*D = Dress, \*K = Kaftan, \*C = Cover Up, \*O = Outer. Print prices for natural fabric are in Bali Swim prints only.



# Women's Resort Price List

Ready Design

Code	Bali Swim Cotton Gauze	Bali Swim Sahara		Bali Swim Matte, Shiny	Bali Swim Crepe Bamboo	Carvico VITA (ECONYL*) △		Bali Swim Tsubaki		Bali Swim Poly Mesh	
	Solid	Solid	Print	Solid	Solid	Solid	Print	Solid	Print	Solid	Print
BSWR-K05	\$19 <sup>95</sup>	\$19 <sup>95</sup>	\$26 <sup>95</sup>	-	-	-	-	-	-	-	-
BSWR-K04	\$21 <sup>95</sup>	\$22 <sup>95</sup>	\$36 <sup>95</sup>	-	-	-	-	-	-	-	-
BSWR-K03	\$22 <sup>95</sup>	\$23 <sup>95</sup>	\$36 <sup>95</sup>	-	-	-	-	-	-	-	-
BSWR-K02	\$21 <sup>95</sup>	\$21 <sup>95</sup>	\$33 <sup>95</sup>	-	-	-	-	-	-	-	-
BSWR-K01	\$18 <sup>95</sup>	\$18 <sup>95</sup>	\$27 <sup>95</sup>	-	-	-	-	-	-	-	-
BSWR-C13	-	\$17 <sup>95</sup>	\$25 <sup>95</sup>	-	-	-	-	-	-	-	-
BSWR-C12	-	-	-	\$16 <sup>95</sup>	-	\$19 <sup>95</sup>	\$22 <sup>95</sup>	-	-	-	-
BSWR-C11	-	\$15 <sup>95</sup>	\$18 <sup>95</sup>	\$15 <sup>95</sup>	-	\$17 <sup>95</sup>	\$21 <sup>95</sup>	\$15 <sup>95</sup>	\$19 <sup>95</sup>	\$17 <sup>95</sup>	\$20 <sup>95</sup>
BSWR-C10	-	-	-	-	-	-	-	\$15 <sup>95</sup>	\$19 <sup>95</sup>	\$16 <sup>95</sup>	\$19 <sup>95</sup>
BSWR-C09	-	\$17 <sup>95</sup>	\$21 <sup>95</sup>	\$18 <sup>95</sup>	-	\$22 <sup>95</sup>	\$27 <sup>95</sup>	\$17 <sup>95</sup>	\$21 <sup>95</sup>	-	-
BSWR-C08	-	-	-	-	-	-	-	-	-	\$18 <sup>95</sup>	\$24 <sup>95</sup>
BSWR-C07	-	-	-	\$16 <sup>95</sup>	-	\$19 <sup>95</sup>	\$23 <sup>95</sup>	-	-	-	-
BSWR-C06	-	-	-	-	\$36 <sup>95</sup>	-	-	\$22 <sup>95</sup>	\$33 <sup>95</sup>	-	-
BSWR-C05	-	-	-	-	\$31 <sup>95</sup>	-	-	\$19 <sup>95</sup>	\$28 <sup>95</sup>	-	-
BSWR-C04	-	-	-	-	\$22 <sup>95</sup>	-	-	\$17 <sup>95</sup>	\$22 <sup>95</sup>	-	-
BSWR-C03	-	-	-	-	\$27 <sup>95</sup>	-	-	\$18 <sup>95</sup>	\$26 <sup>95</sup>	-	-
BSWR-C02	-	-	-	-	\$17 <sup>95</sup>	-	-	\$14 <sup>95</sup>	\$18 <sup>95</sup>	-	-
BSWR-C01	-	-	-	\$15 <sup>95</sup>	-	\$18 <sup>95</sup>	\$21 <sup>95</sup>	-	-	-	-

\*T = Top, \*B = Bottom, \*D = Dress, \*K = Kaftan, \*C = Cover Up, \*O = Outer. Print prices for natural fabric are in Bali Swim prints only.







## Starter Kits

We've helped hundreds of labels successfully launch their brands from scratch. Our Starter Kits are a compilation of useful tools for you to kick start your journey.

[View Starter Kits](#)



## Fabrics

---

We offer a small range of quality natural fabrics at low MOQs. These fabrics are made organically and some are hypoallergenic. We also offer other man-made fabric that are light, breathable with a really nice flow, these polyester fabrics are great for digital printing. You can find more info about our fabric on our website. We recommend that you pay us a visit frequently to stay up to date with everything that we have to offer.

**See latest fabric range and colors [here](#)**



# Prints

**Endless print options.  
Always using Eco Ink.**

---

We do all our prints in house.  
All of our prints are made using  
ecological inks ([ECO PASSPORT  
certified by OEKO-TEX®](#)).

## **Print Strikes**

For all prints, we offer a mock-up & print-strike service, where we send you a digital mockup for proportion (size) approval, and then we make a 30×30cm trial-print swatch to send you. From there, you can personally verify the quality of the print itself, and if there's something you aren't satisfied with, we'll revise it!

For fabric prints, the digital print file (artwork) must be high-resolution (300dpi+) to print well. It can be a vector, JPG, PNG, TIFF, or any other format - as long as the file is high-res.

## **Seamless**

Artwork should be seamless or set up for repeat, which simply means that you can put copies of the print next to it in each direction so that it matches up without any interruption in the pattern. If it's not repeatable initially, you can sometimes mirror the image four ways, and thus create the same effect. We can assist you in ensuring that your print is able to be repeated and replicated in a clear pattern.

## **Scale**

Lastly, the scale of your print is key. For example, you have an artwork/pattern of a starfish - what's the height of each starfish? The difference between a small cute 3cm starfish and large 15cm starfish will make a difference on your end-result.

## **Print Options**

\*includes worldwide license



**Your own print**



**Our Pinterest [selection](#)\***

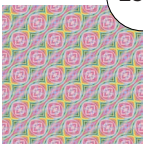


**[Shutterstock](#)\***

# Seamless Prints



Artwork to be repeated and scaled



Scale A



Scale B



30 x 30 cm  
Strike Off



Send to customer  
for approval



Artwork to be repeated and scaled



Scale A



Scale B



30 x 30 cm  
Strike Off



Send to customer  
for approval



Artwork to be repeated and scaled



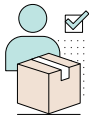
Scale A



Scale B



30 x 30 cm  
Strike Off



Send to customer  
for approval







# Shipping

We usually send all products with DHL or similar level courier. From our experience it's the most reliable way to send products: both samples and bulk production to ensure safe and quick delivery to our customers.

We want to see your products arrive whole, and in time.

## Sample Shipment

**Lead Time**  
4-5 business days worldwide.

**Cost**  
US\$50-150 per shipment depending on how many samples in the box and where you are located.

## Bulk Shipment

**Lead Time**  
4-5 business days worldwide + custom clearing (1-3 days usually).

**Cost per 120-250 pcs (depending on style)**  
Australia: ~US\$150  
USA: ~US\$190  
Europe: ~US\$220

These numbers are based on our last months shipments to a variety of destinations and sizes. Exact prices will be settled when we ship.

## Customs (Duty)

For both samples and bulk shipments, we plan all deliveries to minimize on custom duties.

On your end, you need to do receiving and custom clearance yourself – but we provide with the documentation that you might need from our side.



# Frequently Asked Questions

---

## **I'm new to fashion business and want to run my own. Do you have any tips?**

Grab our [Starter Kit](#)! With that in hand, you'll have everything you need to get going.

## **Is your production ethical? Sustainable?**

At the heart of Bali Swim is our constant endeavor to improve the lives of people and the state of our planet. Read more [here](#).

## **What is your MOQ for samples?**

We don't require a MOQ – our goal is to make your ordering process easy and convenient. Get your ready design samples (and bulk) on [shop.baliswim.com](https://shop.baliswim.com) now!

## **What is your MOQ for manual bulk re-orders?**

200pcs – if you re-order the same styles within 6 months, you won't be subjected to a surcharge.

## **What are your payment terms for manual orders?**

50% deposit and 50% before delivery. You can submit your payments with PayPal (links to CC also) or through a bank transfer.

For new clients, we require a 100% deposit up front for your first order. This only applies once to your first order with us. With PayPal, you have Buyer Protection.

---

### **How long does it take to produce an order (lead times)?**

Orders on [shop.baliswim.com](https://shop.baliswim.com):

- Samples: 3 days (in stock fabrics)
- Bulk: 6 weeks (in stock fabrics)

Samples: 1-3 weeks\* (Ready Design)

Samples: 4-8 weeks\* (Custom Design)

Bulk production 6-8 weeks\*

Shipping: 4-5 business days worldwide (DHL)

Full cycle (start to finish)

- 1-3 months\* (Ready Design)
- 3-6 months\* (Custom Design)

When using imported fabrics, you should add 3-4 weeks onto the timeline to allow shipping time depending on the type of fabric.

\*Current conditions apply to all lead times including fabric availability, current load, holidays and other variables.

Lead times will be confirmed by sales to you directly at order times.

### **What other collections do you make?**

We have expanded our range of collection through the years. See our catalog at [baliswim.com](https://baliswim.com)

### **What kind of products or design elements do you not yet work with?**

As we grow as a company, we have built a network of reliable and trustworthy suppliers. We also have a sourcing service where we can find the right product for you. See our service [here](#).

### **How are my designs kept safe?**

In our Terms & Conditions, we have a segment about Confidentiality (NDA), which protects your Intellectual Property (IP), such as information about you, your business, and your designs. You can read our full T&C [here](#) to understand just how we keep your designs safe.

### **Is bulk production a must if I sample with you?**

No! When you order with us, there is absolutely no obligation to complete a bulk order after producing a sample. You also own your patterns that we develop for you.

---

**What file format for CAD do you work with?**

DXF and DGS.

**What are your Terms & Conditions?**

Please read our T&C by clicking [here](#).

**Who are your clients?**

Aligned with our T&Cs, we do not disclose names, designs, or any information regarding our clients. But on our [homepage](#) and our [Google Maps](#), we have a few reviews from our clients who chose to share their experience working with us. We value privacy and integrity.

We manufacture for labels worldwide, a majority of which are in North America, Australia, and Europe.

We've helped a number of our clients launch their new swimwear lines and they've grown with us over the years. We've also worked with established brands who were seeking a new manufacturing partner.

**Can we visit you in Bali?**

Of course! Our 2000 sqm superfactory hosts all of our operation for you to visit and see. We have private showrooms where you can meet your rep or merchandiser in comfort for an in-depth design and manufacturing discussion and do fitting of your samples. We are located in west Denpasar on a major road for easy and quick access from any location in Bali. To visit our factory please make an appointment first, [here](#).









**We donate 10 cents  
per article of  
resort wear**

**to clean up  
our oceans**

Read more about our ethical and  
sustainable methods [here](#).





**baliswim.com**  
[info@baliswim.com](mailto:info@baliswim.com)  
[+62 813-3888-8585](tel:+6281338888585)

**BaliSwim**

